


LOC FFCM <b>109.7</b>	APP CRS <b>098°</b>	Rwy Idg TDZE Apt Elev	<b>5001</b> <b>906</b> <b>906</b>
--------------------------	------------------------	-----------------------------	---

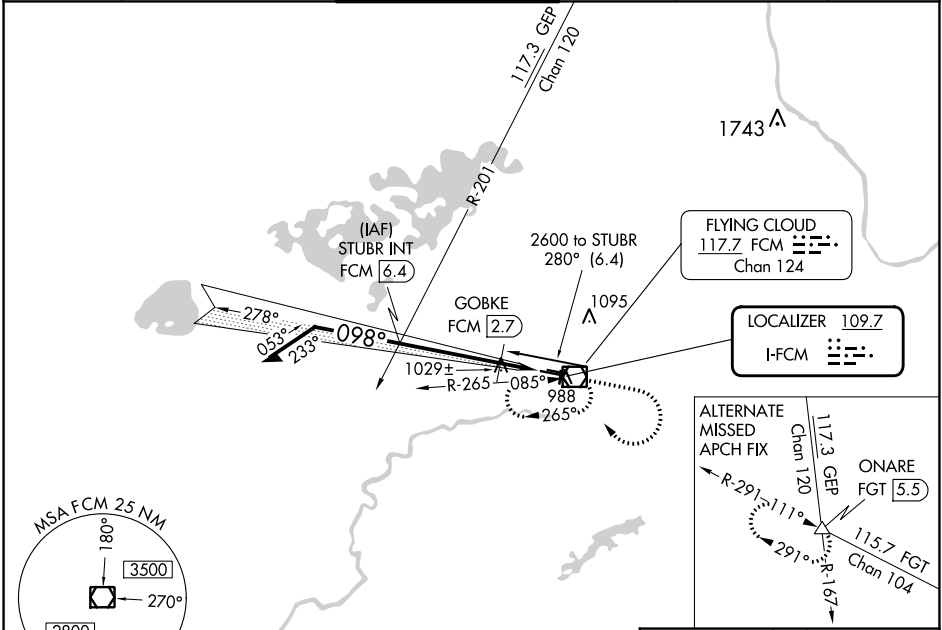
# COPTER ILS or LOC RWY 10R

FLYING CLOUD (FCM)

**⚠** For inoperative MALSR, increase visibility to ½ mile. When local altimeter setting not received, use Minneapolis-St Paul Intl-Wold Chamberlain altimeter setting and increase DA 34 feet and all MDA 40 feet.

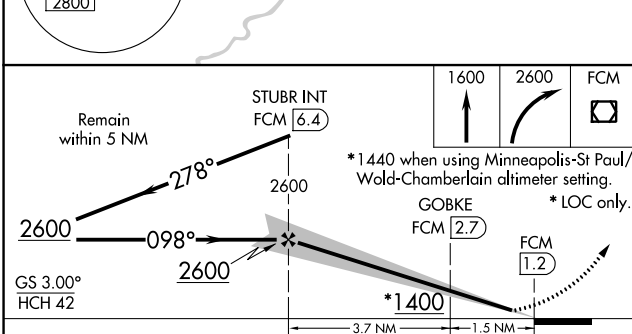
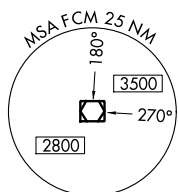
**MALSR**  MISSED APPROACH: Climb to 1600 then climbing right turn to 2600 direct FCM VOR/DME and hold, continue climb-in-hold to 2600.

ATIS <b>124.9</b>	MINNEAPOLIS APP CON <b>134.7 284.7</b>	FLYING CLOUD TOWER * <b>119.15 (CTAF)</b> 	GND CON <b>121.7</b>	CLNC DEL <b>121.7</b> (When twr closed)	UNICOM <b>122.95</b>
----------------------	---	--	-------------------------	---	-------------------------

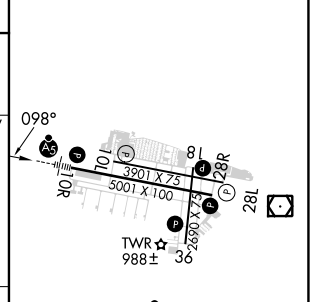


NC-1, 21 MAR 2024 to 18 APR 2024




NC-1, 21 MAR 2024 to 18 APR 2024



ELEV 906	TDZE 906
----------	----------



CATEGORY	COPTER
H-ILS 10R	1106-¼ 200 (200-¼)
H-LOC 10R	1400-¼ 494 (500-¼)
GOBKKE FIX MINIMUMS (DME REQUIRED)	
H-LOC 10R	1280-¼ 374 (400-¼)

HIRL Rwy 10R-28L 					
REIL Rwy 10L and 28R					
REIL Rwy 18, 28L, and 36 					
MIRL Rwy 10L-28R					
MIRL Rwy 18-36 					
FAF to MAP 5.2 NM					
Knots	45	60	75	90	105
Min:Sec	6:56	5:12	4:10	3:28	2:58