


LOC I-FCM 109.7	APP CRS 098°	Rwy Idg TDZE Apt Elev	5001 906 906
---------------------------	------------------------	-----------------------------	---

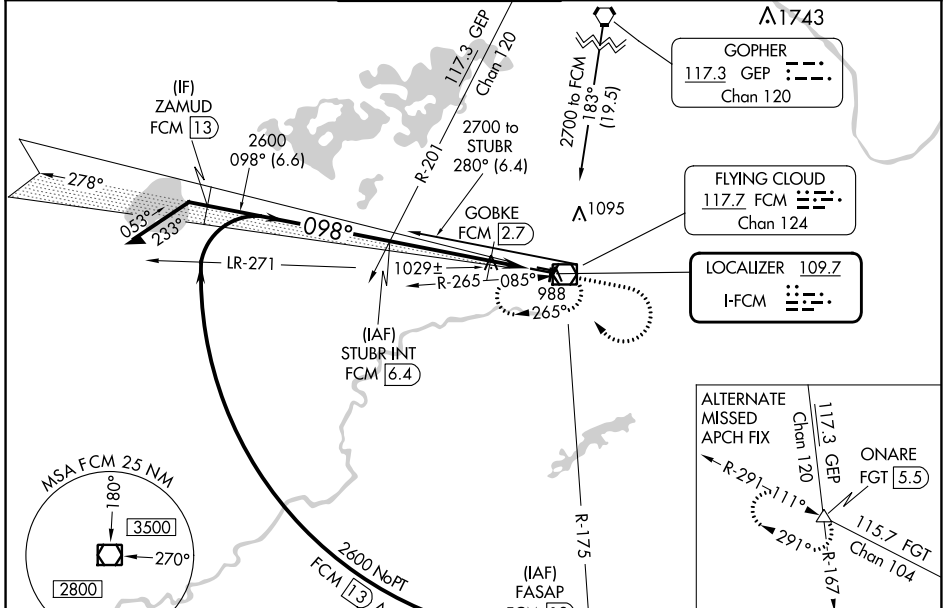
ILS or LOC RWY 10R

FLYING CLOUD (FCM)

⚠ When local altimeter setting not received, use Minneapolis-St Paul Intl/Wold Chamberlain altimeter setting and increase all DA 34 feet and all MDA 40 feet, increase S-LOC Cat C and D visibility ¼ mile, GOBKE fix minimums: Increase S-LOC Cat C visibility ¼ mile. When Circling to Rwy 18, 36 at night, operational VGSI required, remain on or above VGSI glidepath until threshold.

MALSR  MISSED APPROACH: Climb to 1800 then climbing right turn to 2700 direct FCM VOR/DME and hold, continue climb-in-hold to 2700.

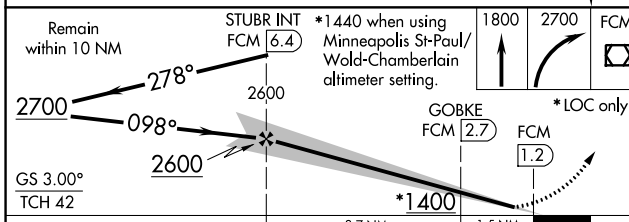
ATIS 124.9	MINNEAPOLIS APP CON 134.7 284.7	FLYING CLOUD TOWER * 119.15 (CTAF)	GND CON 121.7	CLNC DEL 121.7 (When twr closed)	UNICOM 122.95
----------------------	---	--	-------------------------	---	-------------------------



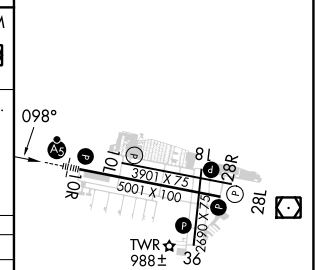
NC-1, 21 MAR 2024 to 18 APR 2024

NC-1, 21 MAR 2024 to 18 APR 2024

ELEV 906	TDZE 906
----------	----------



CATEGORY	A	B	C	D
S-ILS 10R	1106-½		200 (200-½)	
S-LOC 10R	1400-½	494 (500-½)	1400-¾ 494 (500-¾)	1400-1 494 (500-1)
C CIRCLING	1400-1 494 (500-1)	1440-1 534 (600-1)	1440-1½ 534 (600-1½)	1540-2 634 (700-2)
GOBKE FIX MINIMUMS (DME REQUIRED)				
S-LOC 10R	1280-½		374 (400-½)	
C CIRCLING	1320-1 414 (500-1)	1440-1 534 (600-1)	1440-1½ 534 (600-1½)	1540-2 634 (700-2)



HIRL Rwy 10R-28L **Ⓛ**
 REIL Rwys 10L and 28R
 REIL Rwys 18, 28L, and 36 **Ⓛ**
 MIRL Rwy 10L-28R
 MIRL Rwy 18-36 **Ⓛ**

FAF to MAP 5.2 NM

Knots	60	90	120	150	180
Min:Sec	5:12	3:28	2:36	2:05	1:44