

(ORSKY3.ORSKY) 23334

# ORSKY THREE DEPARTURE

AL-5094 (FAA)

FLYING CLOUD (FCM)  
MINNEAPOLIS, MINNESOTA

MINNEAPOLIS DEP CON  
134.7 284.7  
ATIS  
124.9  
MINNEAPOLIS CLNC DEL  
121.7 (when tower closed)  
FLYING CLOUD TOWER ★  
119.15

RADAR required.

**TOP ALTITUDE:  
ASSIGNED BY ATC**

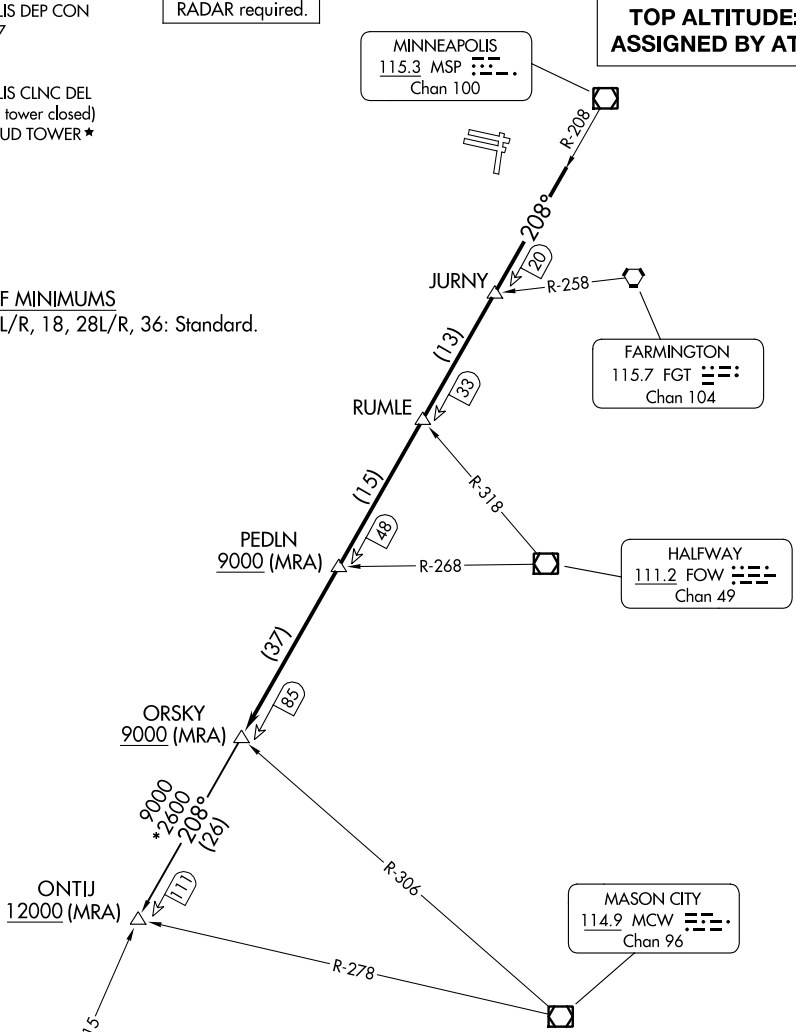
MINNEAPOLIS  
115.3 MSP  
Chan 100

### TAKEOFF MINIMUMS

Rwys 10L/R, 18, 28L/R, 36: Standard.

NC-1, 21 MAR 2024 to 18 APR 2024

NC-1, 21 MAR 2024 to 18 APR 2024



NOTE: Chart not to scale.

**DEPARTURE ROUTE DESCRIPTION**

**TAKEOFF ALL RUNWAYS:** Climb on assigned heading for RADAR vectors to assigned fix on MSP R-208, then on depicted route to ORSKY, then on transition. Maintain ATC assigned altitude. Expect filed altitude 10 minutes after departure.

**ONTIJ TRANSITION (ORSKY3.ONTIJ):** From over ORSKY INT on MSP R-208 to ONTIJ INT.

ORSKY THREE DEPARTURE  
(ORSKY3.ORSKY) 08SEP22

MINNEAPOLIS, MINNESOTA  
FLYING CLOUD (FCM)