

WAAS CH 82635 W36A	APP CRS 003°	Rwy Idg 2690 TDZE 905 Apt Elev 906
--	------------------------	---

RNAV (GPS) RWY 36

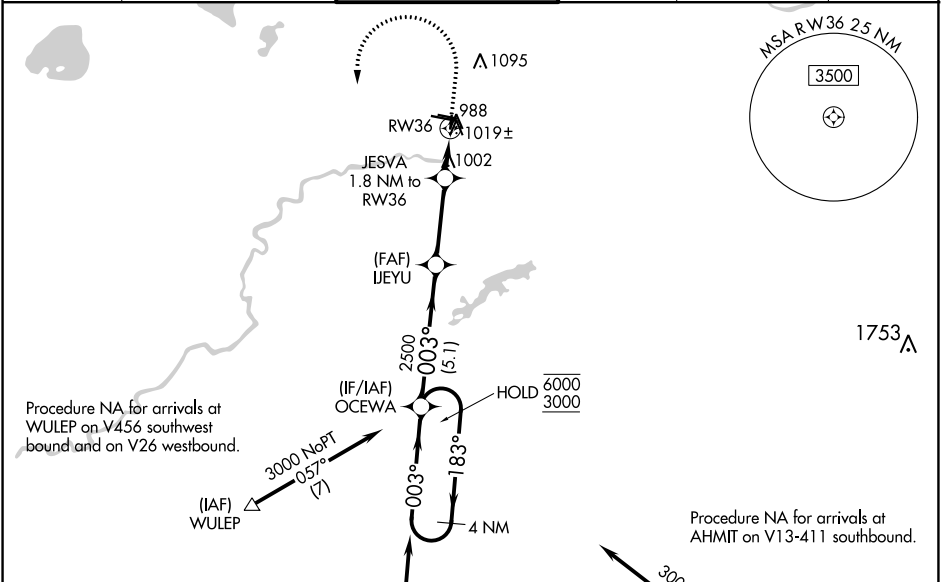
FLYING CLOUD (FCM)

RNP APCH.

⚠ Helicopter visibility reduction below 1 SM NA. When local altimeter setting not received, use Minneapolis St Paul Intl/Wold-Chamberlain altimeter setting and increase all MDA 40 feet and increase LP and LNAV Cat C visibility 1/8 mile. Straight-in Rwy 36 at night, and Circling Rwy 18, 36 at night, operational VGSI required, remain on or above VGSI glidepath until threshold.

MISSED APPROACH: Climb to 2000 then climbing left turn to 3000 direct OCEWA and hold.

ATIS 124.9	MINNEAPOLIS APP CON 134.7 284.7	FLYING CLOUD TOWER * 119.15 (CTAF) 0	GND CON 121.7	CLNC DEL 121.7 (When twr closed)	UNICOM 122.95
----------------------	---	--	-------------------------	---	-------------------------



ELEV 906	TDZE 905
----------	----------

HIRL Rwy 10R-28L Δ
 REIL Rws 10L and 28R
 REIL Rws 18, 28L, and 36 Δ
 MIRL Rwy 10L-28R
 MIRL Rwy 18-36 Δ

TWR \star 988 \pm 36

003° \rightarrow

4 NM Holding Pattern		Visual Segment-Obstacles:																					
6000	3000	2000	3000																				
OCEWA		OCEWA																					
IJEYU		IJEYU																					
JESVA 1.8 NM to RW36		JESVA 1.8 NM to RW36																					
RW36		RW36																					
5.1 NM		3.1 NM																					
1.8 NM																							
003°	183°	003°	003°																				
2500	1500																						
<table border="1"> <thead> <tr> <th>CATEGORY</th> <th>A</th> <th>B</th> <th>C</th> <th>D</th> </tr> </thead> <tbody> <tr> <td>LP MDA</td> <td></td> <td>1260-1</td> <td>355 (400-1)</td> <td>NA</td> </tr> <tr> <td>LNAV MDA</td> <td></td> <td>1280-1</td> <td>375 (400-1)</td> <td>NA</td> </tr> <tr> <td><input checked="" type="checkbox"/> CIRCLING</td> <td>1320-1 414 (500-1)</td> <td>1440-1 534 (600-1)</td> <td>1440-1½ 534 (600-1½)</td> <td>NA</td> </tr> </tbody> </table>				CATEGORY	A	B	C	D	LP MDA		1260-1	355 (400-1)	NA	LNAV MDA		1280-1	375 (400-1)	NA	<input checked="" type="checkbox"/> CIRCLING	1320-1 414 (500-1)	1440-1 534 (600-1)	1440-1½ 534 (600-1½)	NA
CATEGORY	A	B	C	D																			
LP MDA		1260-1	355 (400-1)	NA																			
LNAV MDA		1280-1	375 (400-1)	NA																			
<input checked="" type="checkbox"/> CIRCLING	1320-1 414 (500-1)	1440-1 534 (600-1)	1440-1½ 534 (600-1½)	NA																			

NC-1, 21 MAR 2024 to 18 APR 2024

NC-1, 21 MAR 2024 to 18 APR 2024