

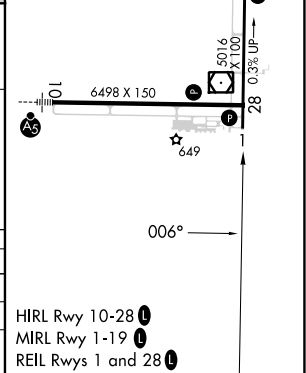
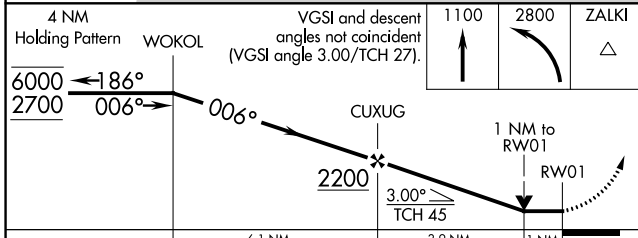
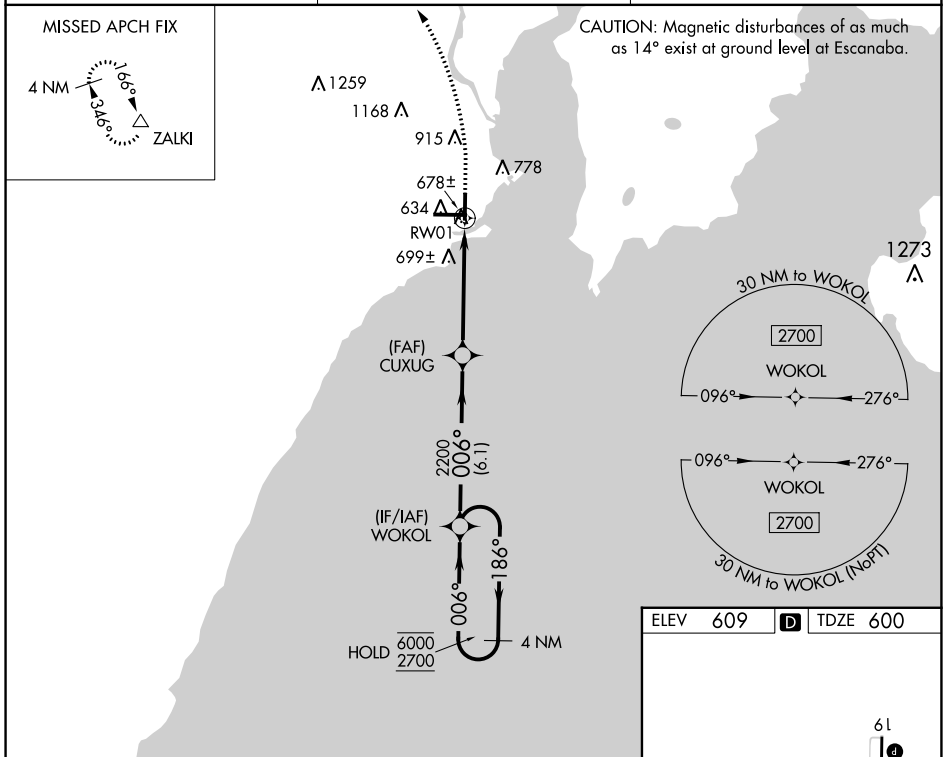
WAAS CH 69333 W01A	APP CRS 006°	Rwy Idg TDZE Apt Elev	5015 600 609
--	------------------------	-----------------------------	---

RNAV (GPS) RWY 1

DELTA COUNTY (E/S C)

RNP APCH - GPS.		MISSED APPROACH: Climb to 1100, then climbing left turn to 2800 direct ZALKI and hold.
<p>⚠ Rwy 1 helicopter visibility reduction below 3/4 SM NA.</p>		

AWOS-3PT 121.425	MINNEAPOLIS CENTER 127.65	UNICOM 122.8 (CTAF) 0
----------------------------	-------------------------------------	---------------------------------



CATEGORY	A	B	C	D
LP MDA		940-1	340 (400-1)	
RNAV MDA		960-1	360 (400-1)	
CIRCLING	1060-1	1080-1	1280-2	1480-2 3/4
	451 (500-1)	471 (500-1)	671 (700-2)	871 (900-2 3/4)

HIRL Rwy 10-28 **0**
MIRL Rwy 1-19 **0**
REIL Rwy 1 and 28 **0**

DELTA COUNTY (E/S C)

RNAV (GPS) RWY 1

EC-1, 21 MAR 2024 to 18 APR 2024

EC-1, 21 MAR 2024 to 18 APR 2024