

APP CRS	Rwy Idg	5999
214°	TDZE	625
	Apt Elev	625

RNAV (GPS) RWY 21

MENOMINEE RGNL (MNM)

RNP APCH.

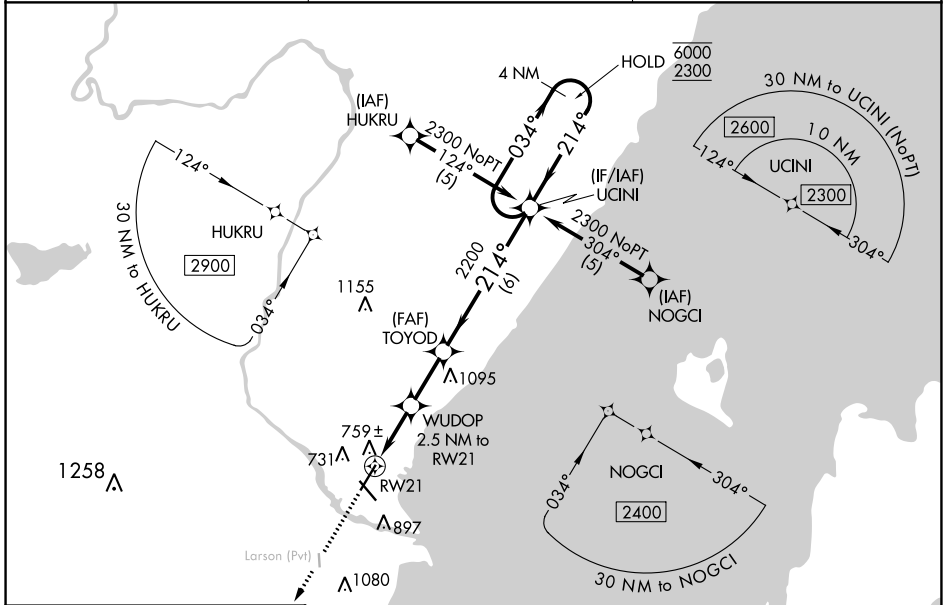
⚠ Circling Rwy 14, 32 NA at night. Rwy 21 helicopter visibility reduction below ¼ SM NA.
⚠ VDP NA when using Sturgeon Bay altimeter setting. When local altimeter setting not received, use Sturgeon Bay altimeter setting and increase all MDA 60 feet, increase LNAV Cat C/D and Circling Cat C/D visibility ¼ SM.

MISSED APPROACH:
 Climb to 2200 direct
 OMUPE and hold.

AWOS-3PT
121.45

GREEN BAY APP CON ★
120.3 338.2

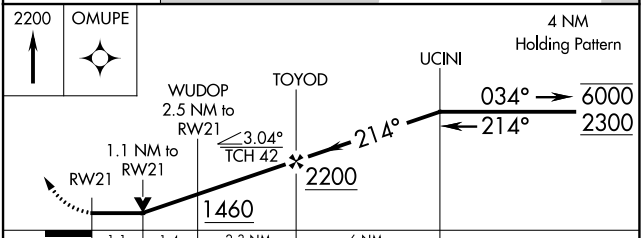
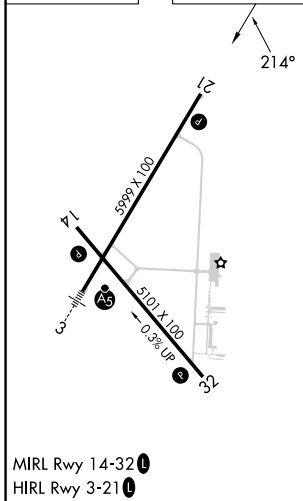
UNICOM
122.8 (CTAF) 0



EC-1, 21 MAR 2024 to 18 APR 2024

EC-1, 21 MAR 2024 to 18 APR 2024

ELEV	625	TDZE	625
------	-----	------	-----



CATEGORY	A	B	C	D
LNAV MDA	1020-1	395 (400-1)	1020-1½	395 (400-1½)
C CIRCLING	1200-1	575 (600-1)	1200-1½	1380-2½
			575 (600-1½)	755 (800-2½)