

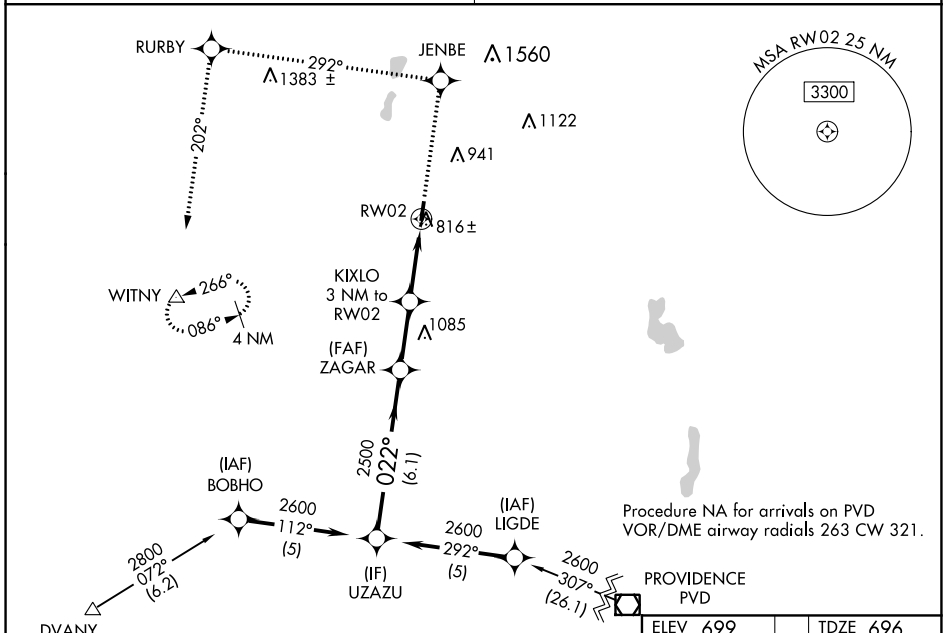
WAAS CH 42616 W02A	APP CRS 022°	Rwy Idg TDZE Apt Elev	3501 696 699
--	------------------------	-----------------------------	---

RNAV (GPS) RWY 2

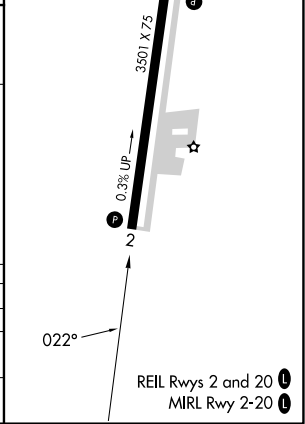
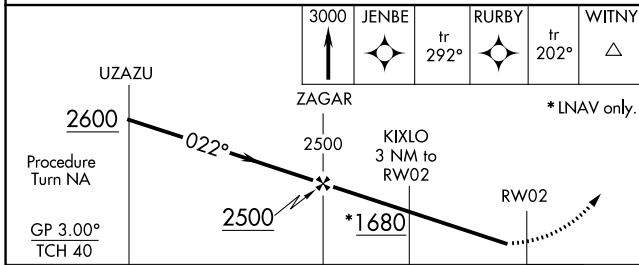
SOUTHBRIDGE MUNI (3B0)

RNP APCH - GPS.	<p>▼ Circling Rwy 20 NA at night. Use Worcester Rgnl altimeter setting, when not received, use Windsor Locks altimeter setting: increase LPV DA to 1090 feet and all visibilities 1/8 SM. Increase all MDAs 80 feet and LNAV visibility Cat C 1/4 SM, and Circling visibility Cat C 1/2 SM.</p>	<p>MISSED APPROACH: Climb to 3000 direct JENBE and via track 292° to RURBY and via track 202° to WITNY and hold.</p>
▲ NA		

BRADLEY APP CON 119.0 327.1	UNICOM 122.8 (CTAF) 0
---------------------------------------	---------------------------------



ELEV 699	TDZE 696
----------	----------



CATEGORY	A	B	C	D
LPV DA	1018-1		322 (400-1)	NA
LNAV MDA	1300-1	604 (700-1)	1300-1 1/4 604 (700-1 1/4)	NA
C CIRCLING	1360-1	661 (700-1)	1360-1 1/4 661 (700-1 1/4)	NA

NE-1, 21 MAR 2024 to 18 APR 2024

NE-1, 21 MAR 2024 to 18 APR 2024