

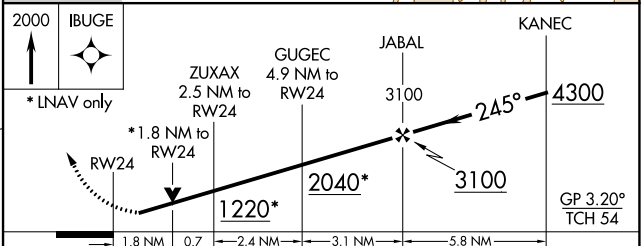
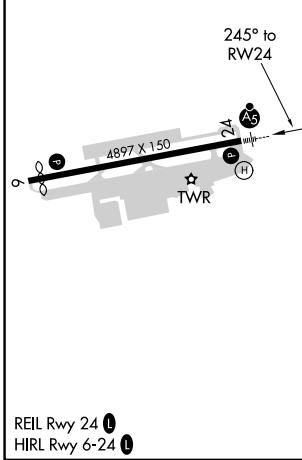
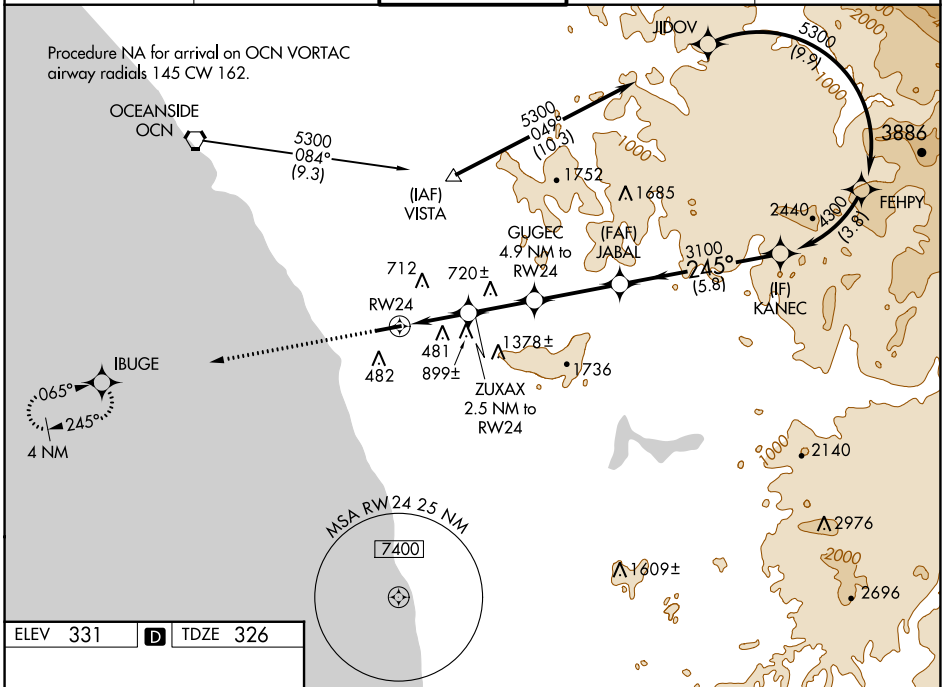
WAAS CH <b>45831</b> <b>W24B</b>	APP CRS <b>245°</b>	Rwy Idg TDZE <b>4897</b> <b>326</b> Apt Elev <b>331</b>
--	------------------------	---

# RNAV (GPS) X RWY 24

MC CLELLAN-PALOMAR (CRQ)

<p><b>⚠</b> For uncompensated Baro-VNAV systems, LNAV/VNAV NA below -4°C (25°F) or above 54°C (130°F). DME/DME RNP-0.3 NA. RF required. Rwy 24 helicopter visibility reduction below RVR 4000 NA. For inop ALS, increase LNAV/VNAV all Cats visibility to 1 7/8 SM. Increase LNAV Cats A/B visibility to RVR 5500, Cat C to 1 7/8 SM. Inop table does not apply to LPV.</p>	MALSR	MISSED APPROACH: Climb to 2000 direct IBUGE and hold.

ATIS <b>120.15</b>	SOCAL APP CON <b>127.3 323.0</b>	<b>PALOMAR TOWER *</b> <b>118.6 (CTAF) 0 276.4</b>	GND CON <b>121.8</b>	CLNC DEL <b>134.85</b>
-----------------------	-------------------------------------	---	-------------------------	---------------------------



CATEGORY	A	B	C	D
LPV DA	528/40	202 (200-3/4)	576/40 250 (300-3/4)	NA
LNAV/VNAV DA	927-1 1/2 601 (600-1 1/2)			NA
LNAV MDA	1000/40	674 (700-3/4)	1000-1 1/2 674 (700-1 1/2)	NA
<b>C</b> CIRCLING	1000-1 669 (700-1)	1020-1 689 (700-1)	1260-2 3/4 929 (1000-2 3/4)	NA

SW-3, 21 MAR 2024 to 18 APR 2024

SW-3, 21 MAR 2024 to 18 APR 2024