

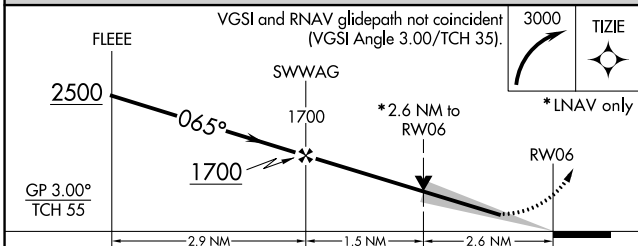
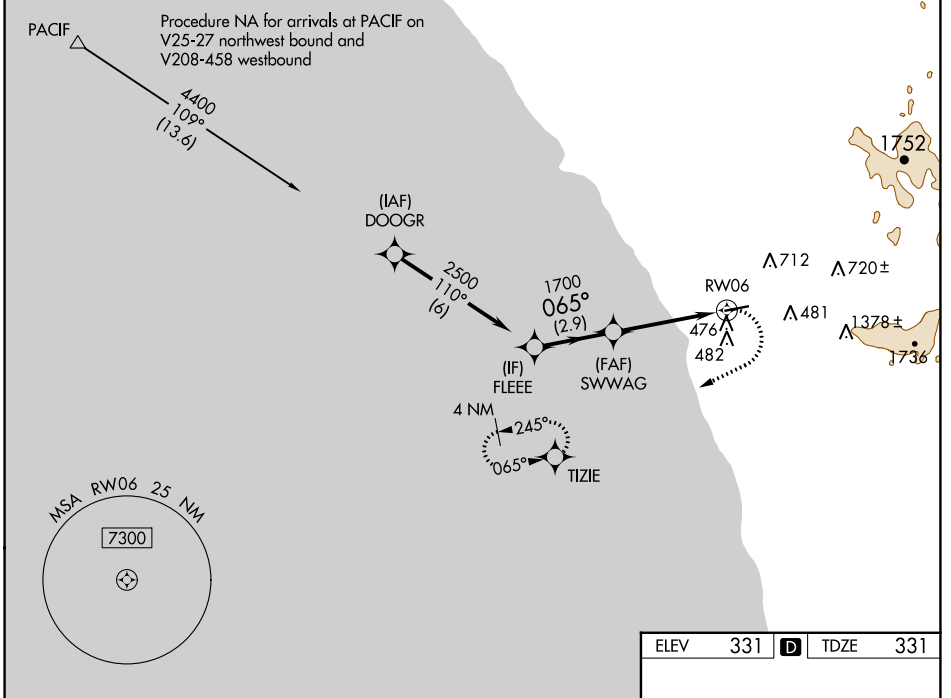
WAAS CH 40239 W06A	APP CRS 065°	Rwy Idg TDZE Apt Elev	4600 331 331
----------------------------------------	------------------------	-----------------------------	-----------------------------------------

RNAV (GPS) Y RWY 6

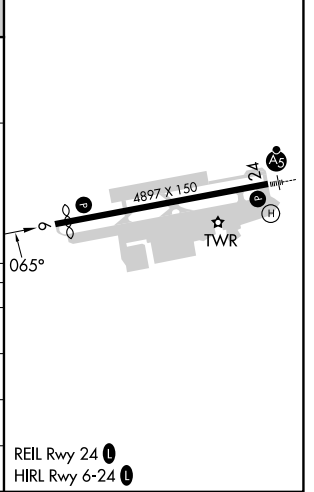
MC CLELLAN-PALOMAR (CRQ)

RNP APCH-GPS.	MISSED APPROACH: Climbing right turn to 3000 direct TIZIE and hold, continue climb-in-hold to 3000.
▽ For uncompensated Baro-VNAV systems, LNAV/VNAV NA below 4°C or above 54°C. When Carlsbad altimeter setting not received, procedure NA.	

ATIS 120.15	SOCAL APP CON 127.3 323.0	PALOMAR TOWER * 118.6 (CTAF) 0 276.4	GND CON 121.8	CLNC DEL 134.85
-----------------------	-------------------------------------	-------------------------------------------------------	-------------------------	---------------------------



ELEV 331	D	TDZE 331
----------	----------	----------



CATEGORY	A	B	C	D
LPV DA		796-1½	465 (500-1½)	
LNAV/VNAV DA		837-1¾	506 (600-1¾)	
LNAV MDA	1200-1 869 (900-1)	1200-1¼ 869 (900-1¼)	1200-2½	869 (900-2½)
C CIRCLING	1200-1¼	869 (900-1¼)	1260-2¾ 929 (1000-2¾)	NA

REIL Rwy 24 **0**
HIRL Rwy 6-24 **0**

SW-3, 21 MAR 2024 to 18 APR 2024

SW-3, 21 MAR 2024 to 18 APR 2024