

WAAS CH 82520 W33A	APP CRS 330°	Rwy Idg 4782 TDZE 471 Apt Elev 475
--	------------------------	---

RNAV (GPS) RWY 33

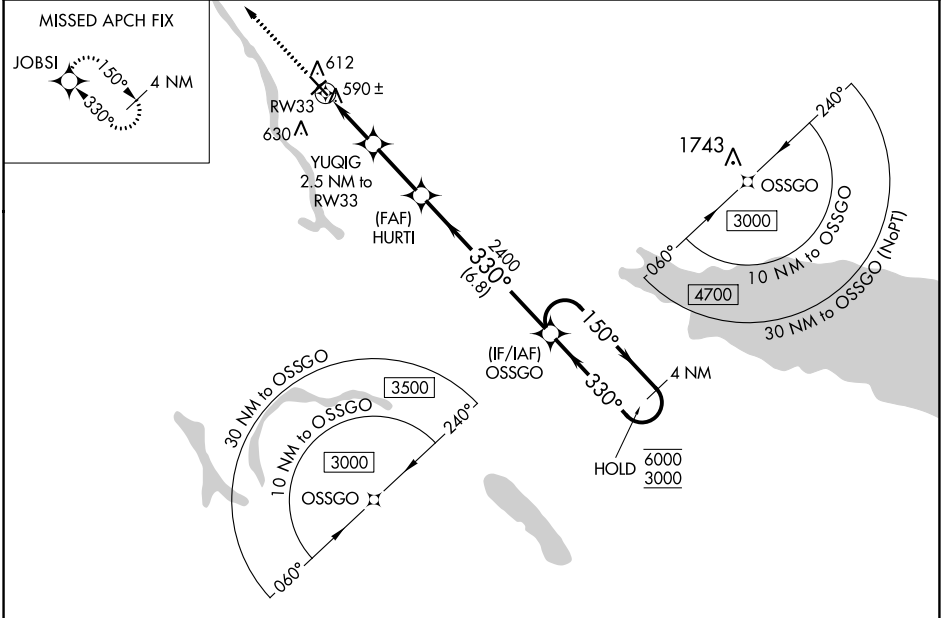
OSWEGO COUNTY (FZY)

RNP APCH.

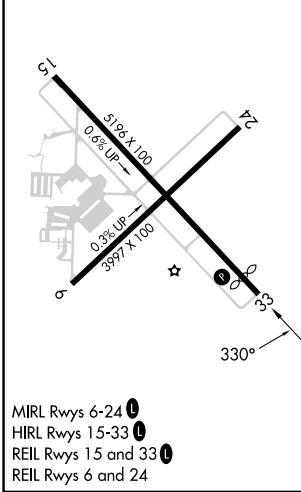
⚠ Rwy 33 helicopter visibility reduction below ¼ SM NA. For uncompensated Baro-VNAV systems, LNAV/VNAV NA below -22°C or above 54°C.

MISSED APPROACH: Climb to 3000 direct JOBSI and hold.

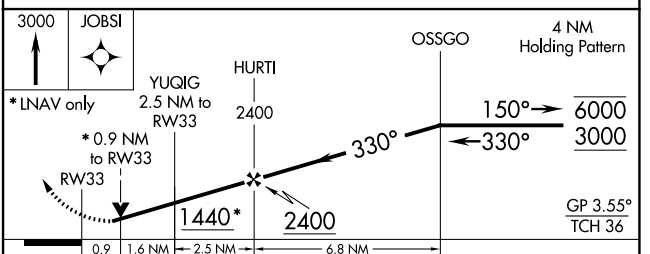
ASOS 119.275	SYRACUSE APP CON 126.125 269.125	UNICOM 123.0 (CTAF)
------------------------	--	-------------------------------



ELEV 475	D	TDZE 471
-----------------	----------	-----------------



MIRL Rwys 6-24
HIRL Rwys 15-33
REIL Rwys 15 and 33
REIL Rwys 6 and 24



CATEGORY	A	B	C	D
LPV DA	810-1 339 (400-1)			NA
LNAV/VNAV DA	771-7/8 300 (300-7/8)			NA
LNAV MDA	840-1 369 (400-1)			NA
C CIRCLING	920-1 445 (500-1)	940-1 465 (500-1)	960-1½ 485 (500-1½)	NA

NE-2, 21 MAR 2024 to 18 APR 2024

NE-2, 21 MAR 2024 to 18 APR 2024