

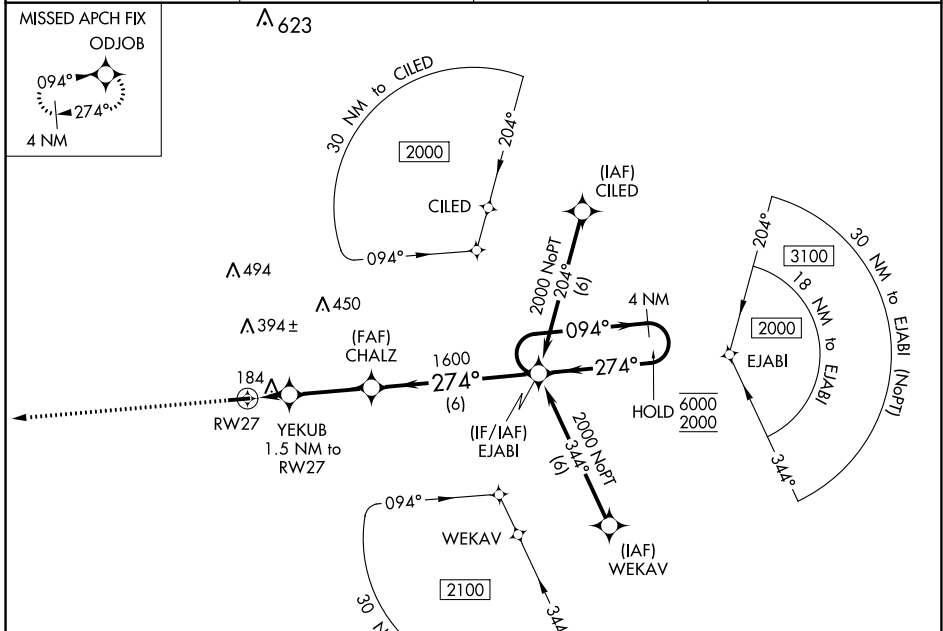
WAAS CH 53336 W27A	APP CRS 274°	Rwy Idg TDZE Apt Elev	4002 36 38
----------------------------------------	------------------------	-----------------------------	---------------------------------------

RNAV (GPS) RWY 27

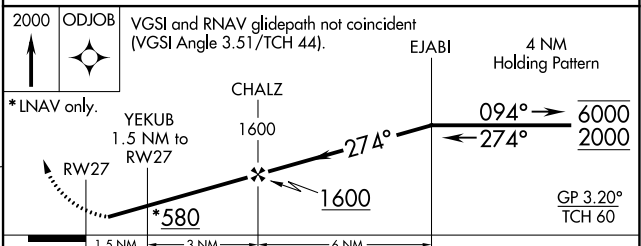
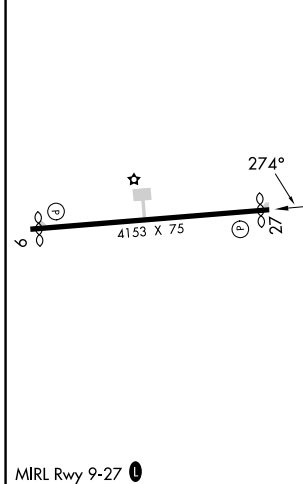
WALLACE-PENDER (ACZ)

RNP APCH. **▼** Circling Rwy 9 NA at night. Rwy 27 helicopter visibility reduction below 3/4 SM NA. **▲ NA** Baro-VNAV NA. Use Wilmington altimeter setting; when not received, use Kenansville altimeter setting. MISSED APPROACH: Climb to 2000 direct ODJOB and hold.

AWOS-3P 121.07	ILM ASOS 124.975	WILMINGTON APP CON * 135.75 317.425	UNICOM 122.8 (CTAF)
--------------------------	----------------------------	-----------------------------------------------	-------------------------------



ELEV 38	TDZE 36
---------	---------



CATEGORY	A	B	C	D
LPV DA	406-1 370 (400-1)			NA
LNAV/VNAV DA	599-1 3/4 563 (600-1 3/4)			NA
LNAV MDA	560-1 524 (600-1)		560-1 1/2 524 (600-1 1/2)	
C CIRCLING	620-1 582 (600-1)		820-2 1/4 782 (800-2 1/4) 820-2 1/2 782 (800-2 1/2)	

SE-2, 21 MAR 2024 to 18 APR 2024

SE-2, 21 MAR 2024 to 18 APR 2024