

WAAS CH <b>93536</b> <b>W09A</b>	APP CRS <b>094°</b>	Rwy Idg TDZE Apt Elev	<b>4004</b> <b>38</b> <b>38</b>
--	------------------------	-----------------------------	---------------------------------------

# RNAV (GPS) RWY 9

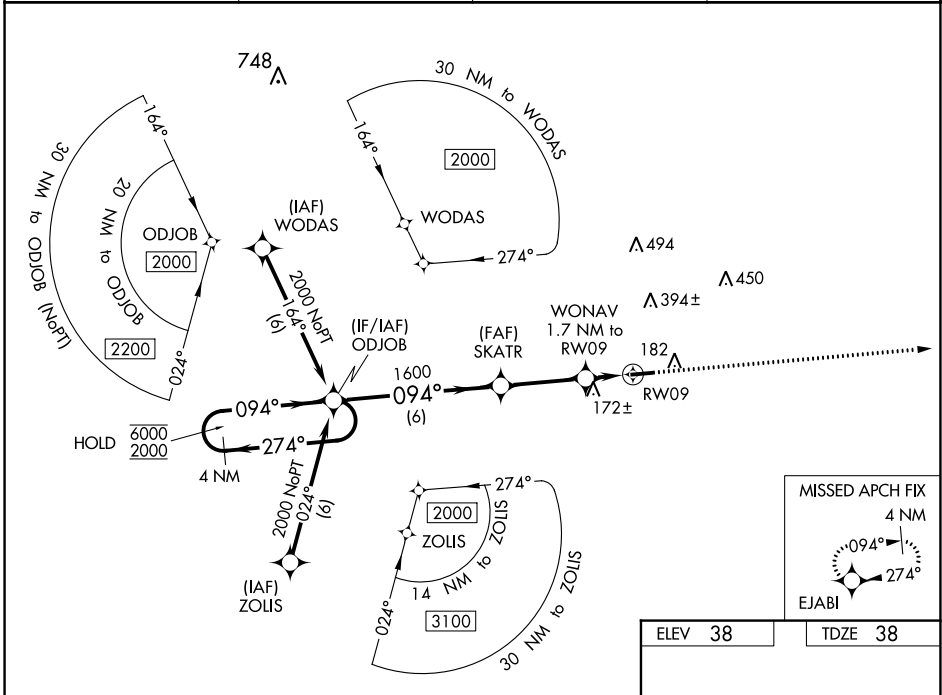
WALLACE-PENDER (ACZ)

RNP APCH.

▼ Rwy 9 helicopter visibility reduction below 1 SM NA. Baro-VNAV NA.  
 ▲ NA Use Wilmington altimeter setting; when not received, use Kenansville altimeter setting.  
 Straight-in and Circling Rwy 9 NA at night.

MISSED APPROACH: Climb to 2000 direct EJABI and hold.

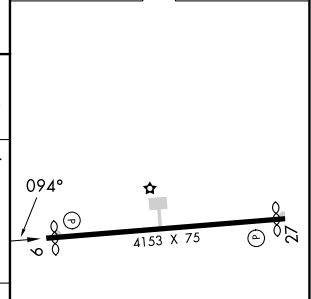
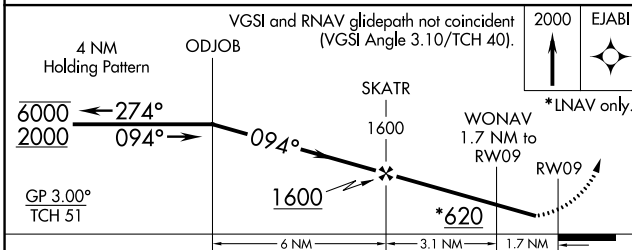
AWOS-3P <b>121.07</b>	ILM ASOS <b>124.975</b>	WILMINGTON APP CON * <b>135.75 317.425</b>	UNICOM <b>122.8 (CTAF)</b>
--------------------------	----------------------------	---	-------------------------------



SE-2, 21 MAR 2024 to 18 APR 2024

SE-2, 21 MAR 2024 to 18 APR 2024

ELEV 38	TDZE 38
---------	---------



CATEGORY	A	B	C	D
LPV DA	401-1	363 (400-1)		
LNAV/VNAV DA	538-1½	500 (500-1½)		
LNAV MDA	500-1 462 (500-1)	500-1¾ 462 (500-1¾)		
CIRCLING	620-1 582 (600-1)	820-2¼ 782 (800-2¼)	820-2½ 782 (800-2½)	

MIRL Rwy 9-27