

APP CRS <b>312°</b>	Rwy Idg <b>2690</b>
	TDZE <b>133</b>
	Apt Elev <b>135</b>

# RNAV (GPS) Y RWY 31R

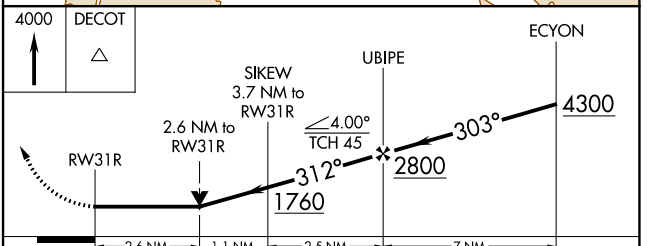
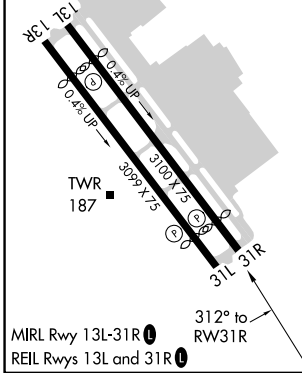
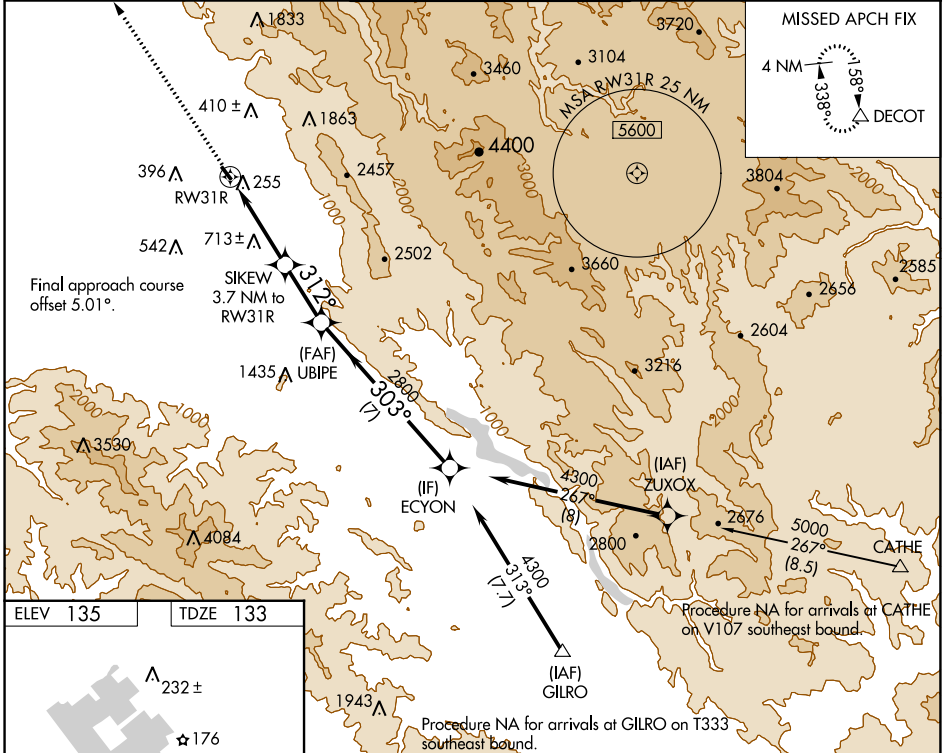
REID-HILLVIEW OF SANTA CLARA COUNTY (R.H.V)

RNP APCH.

**NA** Circling Rwy 31L NA at night. Rwy 31R helicopter visibility reduction below 3/4 SM NA. VDP NA when using Norman Y Mineta San Jose Intl altimeter setting. Circling east of Rwy 13L-31R NA at night. When control tower closed, use Norman Y Mineta San Jose Intl altimeter setting and increase all MDAs 40 feet.

MISSED APPROACH: Climb to 4000 direct DECOY and hold.

ATIS <b>125.2</b>	NORCAL APP CON <b>120.1 290.25</b>	REID-HILLVIEW TOWER * (Rwy 13L-31R) (Rwy 13R-31L) <b>119.8 (CTAF) 126.1</b>	GND CON <b>121.65</b>	UNICOM <b>122.95</b>
----------------------	---------------------------------------	---	--------------------------	-------------------------



CATEGORY	A	B	C	D
LNAV MDA	1300-1¼ 1167 (1200-1¼)	1300-1½ 1167 (1200-1½)		NA
CIRCLING	1300-1¼ 1165 (1200-1¼)	1300-1½ 1165 (1200-1½)		NA

SW-2, 21 MAR 2024 to 18 APR 2024

SW-2, 21 MAR 2024 to 18 APR 2024