

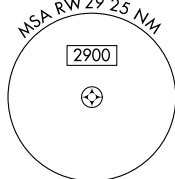
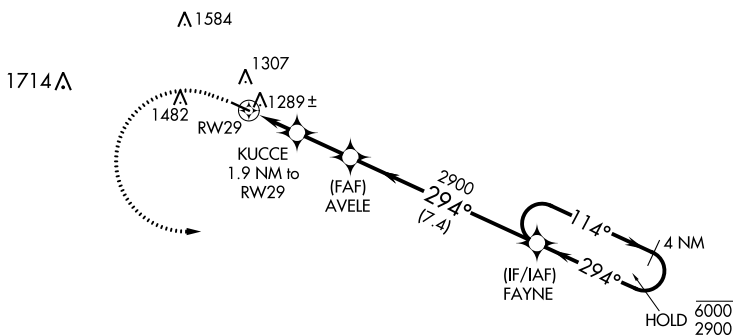
APP CRS	Rwy Idg	4001
294°	TDZE	1158
	Apt Elev	1158

RNAV (GPS) RWY 29

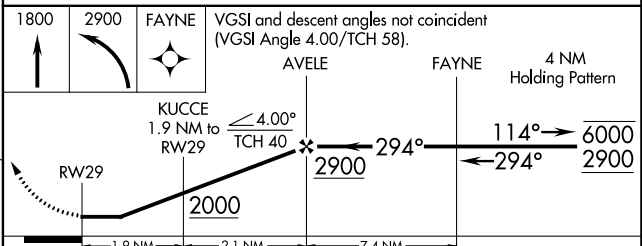
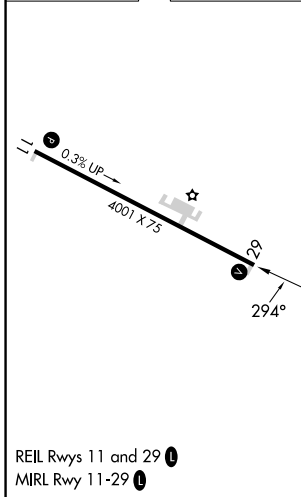
DECORAH MUNI (DEH)

RNP APCH.	MISSED APPROACH: Climb to 1800 then climbing left turn to 2900 direct FAYNE and hold.
Rwy 29 helicopter visibility reduction below 1 SM NA.	

AWOS-3 120.925	MINNEAPOLIS CENTER 118.85	UNICOM 122.8 (CTAF) 0
--------------------------	-------------------------------------	---------------------------------



ELEV 1158	TDZE 1158
-----------	-----------



VECTORS	1800	2900	FAYNE	VGSI and descent angles not coincident (VGSI Angle 4.00°/TCH 58).
		AVELE	FAYNE	4 NM Holding Pattern
		KUCCE 1.9 NM to RWY29		
		2000	2900	6000/2900
		1.9 NM	2.1 NM	7.4 NM
CATEGORY	A	B	C	D
LNAV MDA	1540-1	382 (400-1)	NA	
CIRCLING	1600-1 442 (500-1)	1620-1 462 (500-1)	NA	

NC-3, 21 MAR 2024 to 18 APR 2024

NC-3, 21 MAR 2024 to 18 APR 2024