

| | | |
|-------------|----------|-------------|
| APP CRS | Rwy Idg | 6000 |
| 055° | TDZE | 670 |
| | Apt Elev | 681 |

RNAV (GPS) RWY 6

MAURY COUNTY RGNL (MRC)

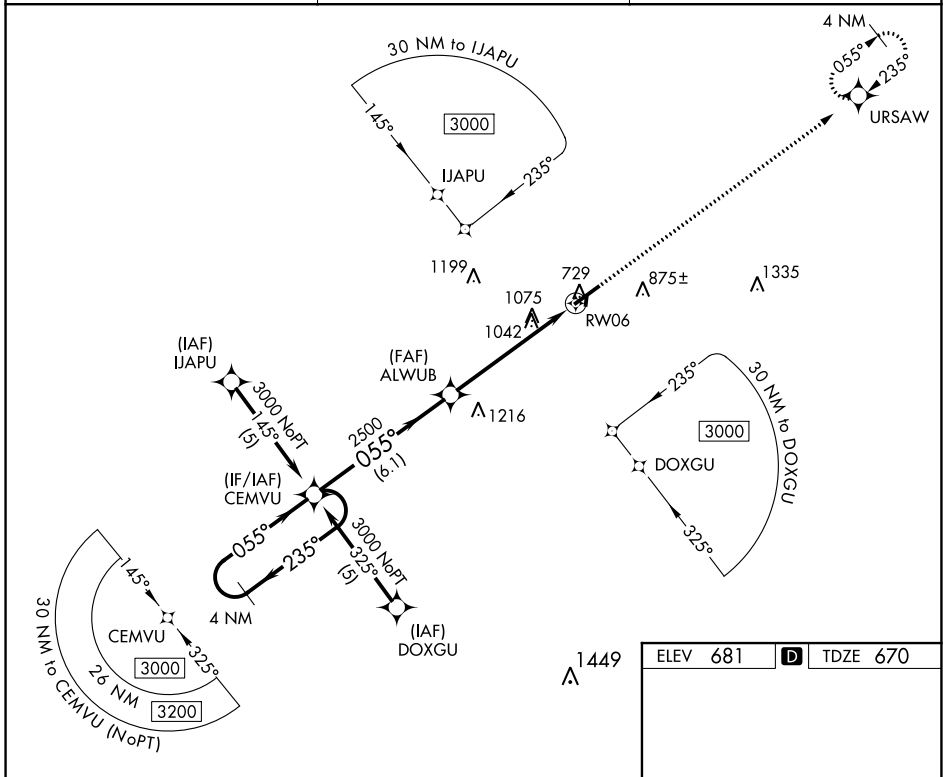
⚠ DME/DME RNP-0.3 NA. Visibility reduction by helicopters NA. When local altimeter setting not received, use Nashville Intl altimeter setting; increase all MDA 120 feet and increase LNAV Cat B visibility ¼ SM, Cats C and D visibility ½ SM, increase Circling Cat C visibility ½ SM.

MISSED APPROACH:
Climb to 3000 direct URSAW and hold.

AWOS-3
128.625

MEMPHIS CENTER
125.85 379.25

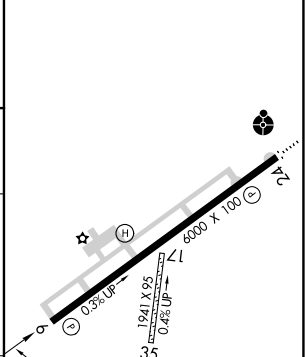
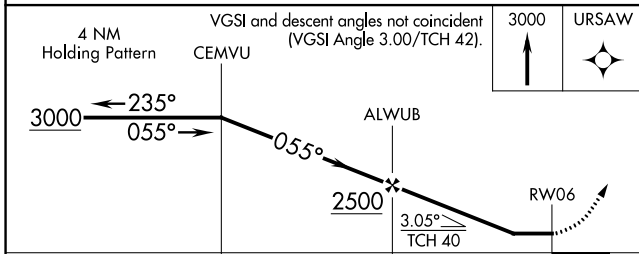
UNICOM
122.8 (CTAF) 0



SE-1, 21 MAR 2024 to 18 APR 2024

SE-1, 21 MAR 2024 to 18 APR 2024

| | | | | |
|------|------------|----------|------|------------|
| ELEV | 681 | D | TDZE | 670 |
|------|------------|----------|------|------------|



| CATEGORY | A | B | C | D |
|----------|-----------------------|-----------------------|-------------------------|------------------------|
| LNAV MDA | 1340-1 | 670 (700-1) | 1340-1¾ 670 (700-1¾) | 1340-2 670 (700-2) |
| CIRCLING | 1340-1 659 (700-1) | 1360-1 679 (700-1) | 1380-2 699 (700-2) | 1620-3 939 (1000-3) |

MIRL Rwy 6-24
REIL Rwy 6
REIL Rwy 24 **0**