

WAAS CH <b>99738</b> <b>W19A</b>	APP CRS <b>187°</b>	Rwy Idg <b>4902</b> TDZE <b>1600</b> Apt Elev <b>1600</b>
--	------------------------	---

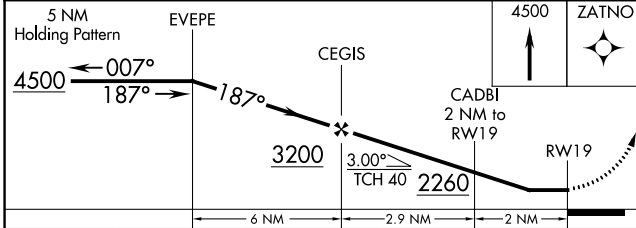
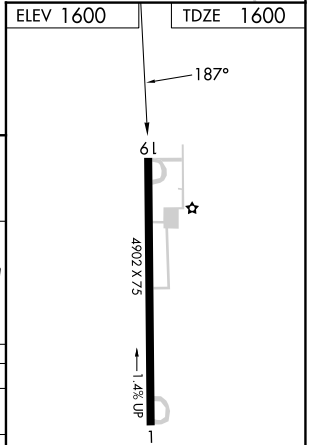
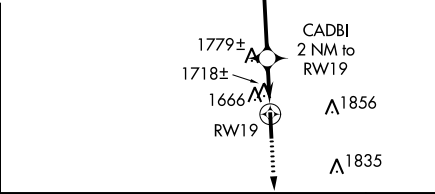
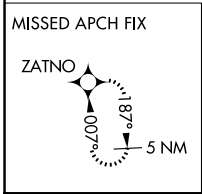
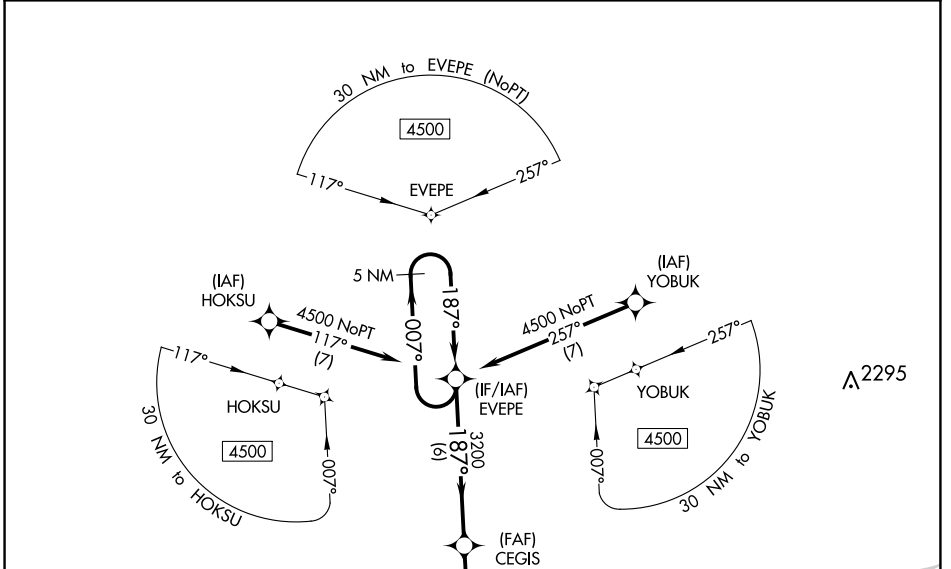
# RNAV (GPS) RWY 19

TITUSVILLE (6G1)

**NA** DME/DME RNP-0.3 NA. Helicopter visibility reduction below 3/4 SM NA. Use Franklin altimeter setting. When not received, use Port Meade altimeter setting and increase all MDA 40 feet; increase LP Cats C/D and Circling Cat C visibility 1/4 mile. Night landing: Rwy 1 NA.

**MISSED APPROACH:** Climb to 4500 direct ZATNO and hold.

FKL AWOS-3PT <b>118.175</b>	YOUNGSTOWN APP CON ★ <b>133.95 322.3</b>	CTAF <b>122.9</b>
--------------------------------	---	----------------------



CATEGORY	A	B	C	D
LP MDA	2020-1 420 (500-1)		2020-1 1/8 420 (500-1 1/8)	
LNAV MDA	2080-1 480 (500-1)		2080-1 3/8 480 (500-1 3/8)	
<b>C</b> CIRCLING	2100-1 500 (500-1)		2200-1 1/2 600 (600-1 1/2)	2280-2 1/4 680 (700-2 1/4)

MRL Rwy 1-19

NE-4, 21 MAR 2024 to 18 APR 2024

NE-4, 21 MAR 2024 to 18 APR 2024