

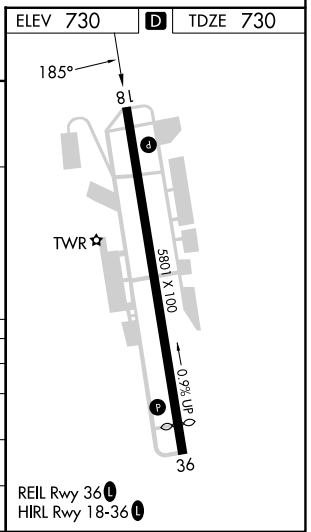
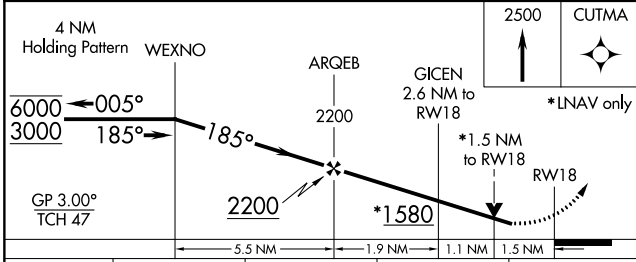
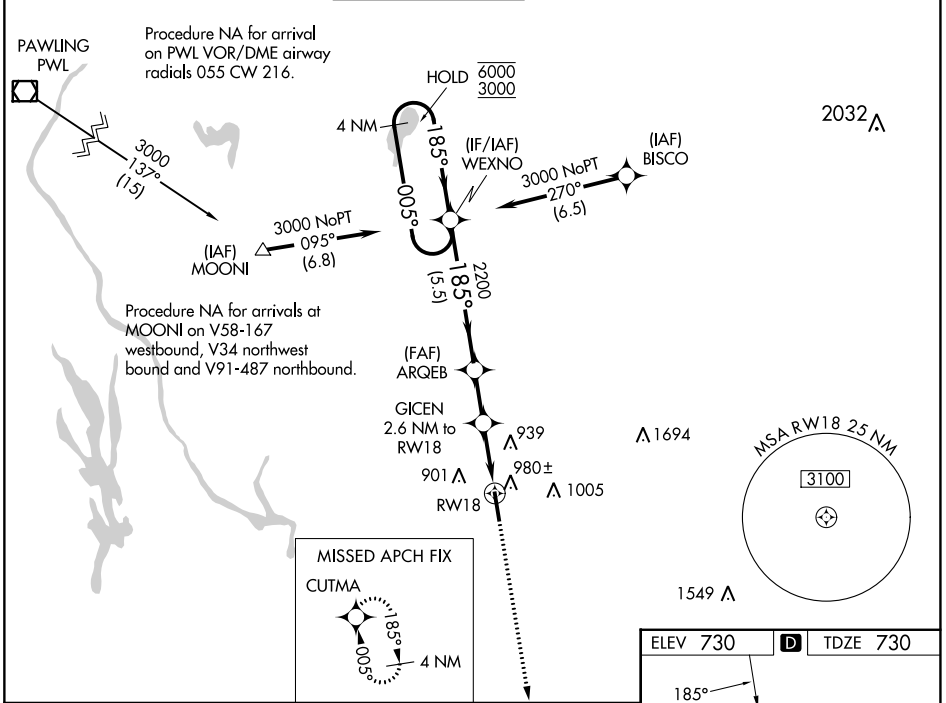
WAAS CH <b>42901</b> <b>W18A</b>	APP CRS <b>185°</b>	Rwy Idg <b>5801</b> TDZE <b>730</b> Apt Elev <b>730</b>
--	------------------------	---

# RNAV (GPS) RWY 18

WATERBURY-OXFORD (OXC)

RNP APCH.		MISSED APPROACH: Climb to 2500 direct CUTMA and hold.	
<p>▼ Rwy 18 helicopter visibility reduction below 3/4 SM NA. ▲ For uncompensated Baro-VNAV systems, LNAV/VNAV NA below -16°C or above 54°C.</p>			

ATIS <b>132.975</b>	NEW YORK APP CON <b>124.075 343.65</b>	OXFORD TOWER ★ <b>118.475 (CTAF) 0</b>	GND CON <b>121.65</b>	CLNC DEL <b>121.65</b>	UNICOM <b>122.95</b>
------------------------	---	---	--------------------------	---------------------------	-------------------------



CATEGORY	A	B	C	D
LPV DA	1140-1 1/8		410 (500-1 1/8)	
LNAV/VNAV DA	1141-1 1/8		411 (500-1 1/8)	
LNAV MDA	1240-1 510 (600-1)		1240-1 3/8 510 (600-1 3/8)	
CIRCLING	1300-1 570 (600-1)		1380-1 3/4 650 (700-1 3/4) 1460-2 1/4 730 (800-2 1/4)	

NE-1, 21 MAR 2024 to 18 APR 2024

NE-1, 21 MAR 2024 to 18 APR 2024