

(BNICE2.BNICE) 24081

AL-5942 (FAA)

FORT LAUDERDALE EXEC (FXE)

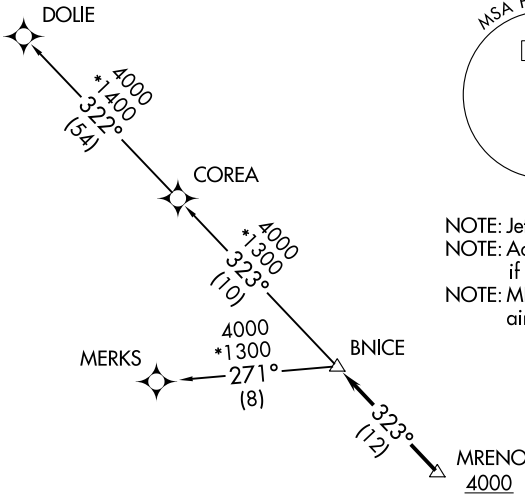
# BNICE TWO DEPARTURE(RNAV)

FORT LAUDERDALE, FLORIDA

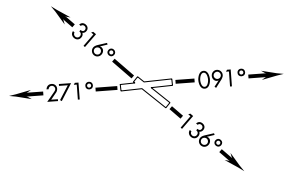
RNAV 1 - DME/DME/IRU or GPS.  
RADAR required for non-GPS equipped aircraft.

**TOP ALTITUDE:  
ASSIGNED BY ATC**

MIAMI DEP CON 126.05 251.1  
ATIS 119.85  
CLNC DEL 127.95  
GND CON 121.75  
EXECUTIVE TOWER 120.9 239.3



NOTE: Jet aircraft only.  
NOTE: Accelerate to 250K until leaving 10000, if unable, advise ATC.  
NOTE: MERKS Transition ATC assigned only except aircraft landing: MKY, RSW, APF, PGD, FMY.



### TAKEOFF MINIMUMS

Rwys 9, 13, 27, 31: Standard with minimum climb of 500'/NM to 520.

NOTE: Chart not to scale.



### DEPARTURE ROUTE DESCRIPTION

- TAKEOFF RUNWAY 9: Climb on heading 091° or as assigned by ATC, then...
- TAKEOFF RUNWAY 13: Climb on heading 136° or as assigned by ATC, then...
- TAKEOFF RUNWAY 27: Climb on heading 271° or as assigned by ATC, then...
- TAKEOFF RUNWAY 31: Climb on heading 316° or as assigned by ATC, then...

... for RADAR vectors to cross MRENO at or above 4000, then on track 323° to BNICE, then on assigned transition, maintain ATC assigned altitude, expect clearance to filed altitude within 10 minutes after departure.

- COREA TRANSITION (BNICE2.COREA)
- DOLIE TRANSITION (BNICE2.DOLIE)
- MERKS TRANSITION (BNICE2.MERKS)

# BNICE TWO DEPARTURE(RNAV)

(BNICE2.BNICE) 21MAR24

FORT LAUDERDALE, FLORIDA

FORT LAUDERDALE EXEC (FXE)

SE-3, 21 MAR 2024 to 18 APR 2024

SE-3, 21 MAR 2024 to 18 APR 2024