

MAYNR TWO DEPARTURE (RNAV)

**TOP ALTITUDE:
ASSIGNED BY ATC**



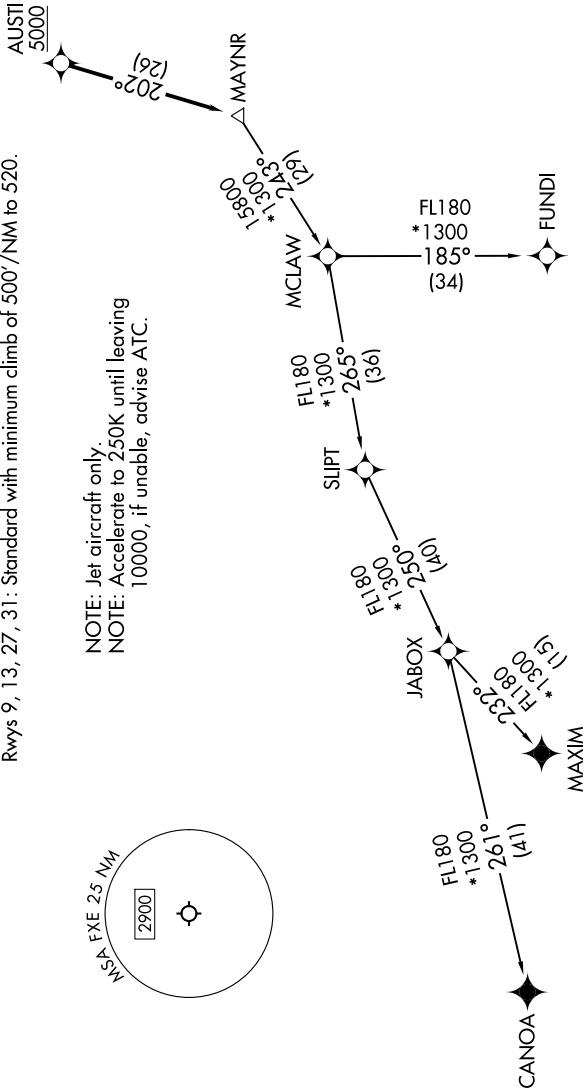
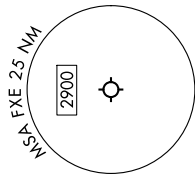
RNAV1 - DME/DME/IRU or GPS.
From SIIPT to MAXIM: RNAV 1 - GPS.
From SIIPT to CANOA: RNAV 1 - GPS.
RADAR required.

SE-3, 21 MAR 2024 to 18 APR 2024

MIAMI DEP CON
126.05 251.1
ATIS
119.85
CLNC DEL
127.95
GND CON
121.75
EXECUTIVE TOWER
120.9 239.3

TAKEOFF MINIMUMS
Rwys 9, 13, 27, 31: Standard with minimum climb of 500'/NM to 520.

NOTE: Jet aircraft only.
NOTE: Accelerate to 250K until leaving
10000, if unable, advise ATC.



(COMPLETED ON FOLLOWING PAGE)

NOTE: Chart not to scale.

MAYNR TWO DEPARTURE (RNAV)

(MAYNR2.MAYNR) 21MAR24