

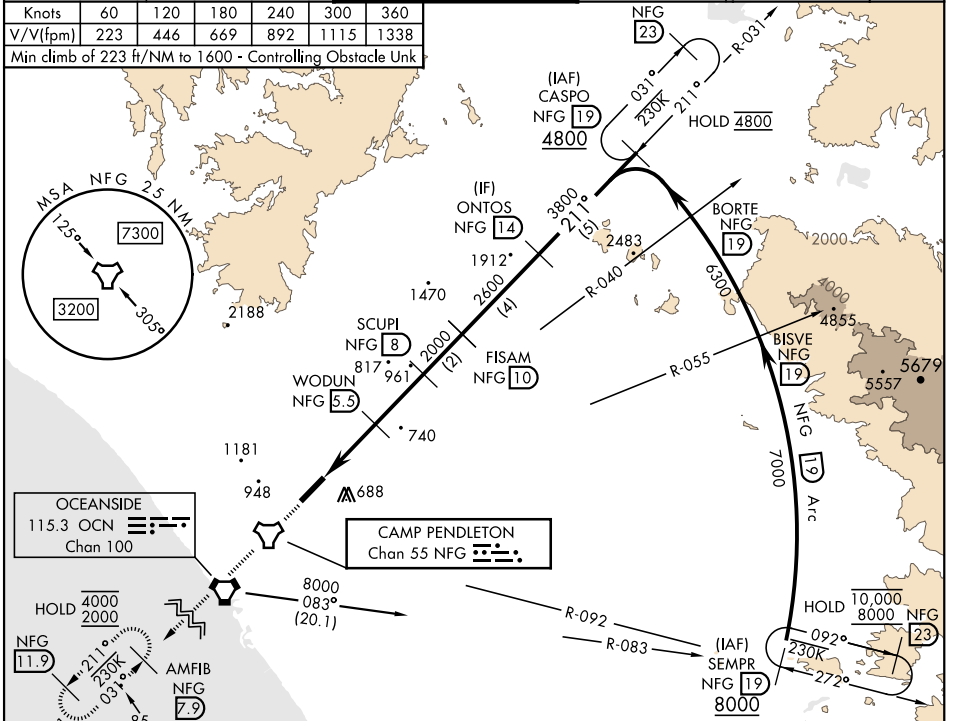
TACAN Z RWY 21

TACAN NFG Chan 55	APCH CRS 211°	Rwy Idg TDZE Arpt Elev	6005 78 78	[USN]	CAMP PENDLETON MCAS (MUNN FLD) (KNFG)
<p>▼ * When ALS inop, increase CAT A vis to 1 mile, CAT B to 1½ miles. ** Circling Rwy 3 not authorized at night when VGSI inop. Visibility Reduction by Helicopters NA.</p>					<p>SALSF A2</p>

ATIS ★ 285.45	SOCAL APP CON 127.3 323.0	TOWER ★ 128.775 340.2	GND CON 134.675 360.2	CLNC DEL 134.675 271.6	ASR/PAR
-------------------------	-------------------------------------	---------------------------------	---------------------------------	----------------------------------	---------

Knots	60	120	180	240	300	360
V/V(fpm)	223	446	669	892	1115	1338

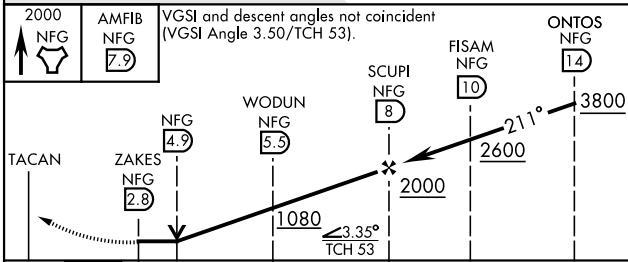
Min climb of 223 ft/NM to 1600 - Controlling Obstacle Unk



OCEANSIDE
115.3 OCN
Chan 100

CAMP PENDLETON
Chan 55 NFG

EMERG SAFE ALT 100 NM 13,600



CATEGORY	A	B	C	D
S-21*	940-¾ 862 (900-¾)	940-1 862 (900-1)	940-2½ 862 (900-2½)	
CIRCLING**	1000-1¼ 922 (1000-1¼)	1260-1½ 1182 (1200-1½)	1500-3 1422 (1500-3)	

ELEV 78	TDZE 78
---------	---------

The diagram shows the runway and taxiway layout for TACAN Z RWY 21. Key features include:

- Runway:** RWY 21, length 4005 + 221 ft.
- Taxiway:** TWY 169, TWY 170, TWY 171, TWY 172, TWY 173, TWY 174, TWY 175, TWY 176, TWY 177, TWY 178, TWY 179, TWY 180, TWY 181, TWY 182, TWY 183, TWY 184, TWY 185, TWY 186, TWY 187, TWY 188, TWY 189, TWY 190, TWY 191, TWY 192, TWY 193, TWY 194, TWY 195, TWY 196, TWY 197, TWY 198, TWY 199, TWY 200.
- Obstacles:** HIRL Rwy 3-21, TWY 169.
- Angles:** 211°, 0.3% DOWN.

TACAN Z RWY 21

SW-3, 21 MAR 2024 to 18 APR 2024

SW-3, 21 MAR 2024 to 18 APR 2024