

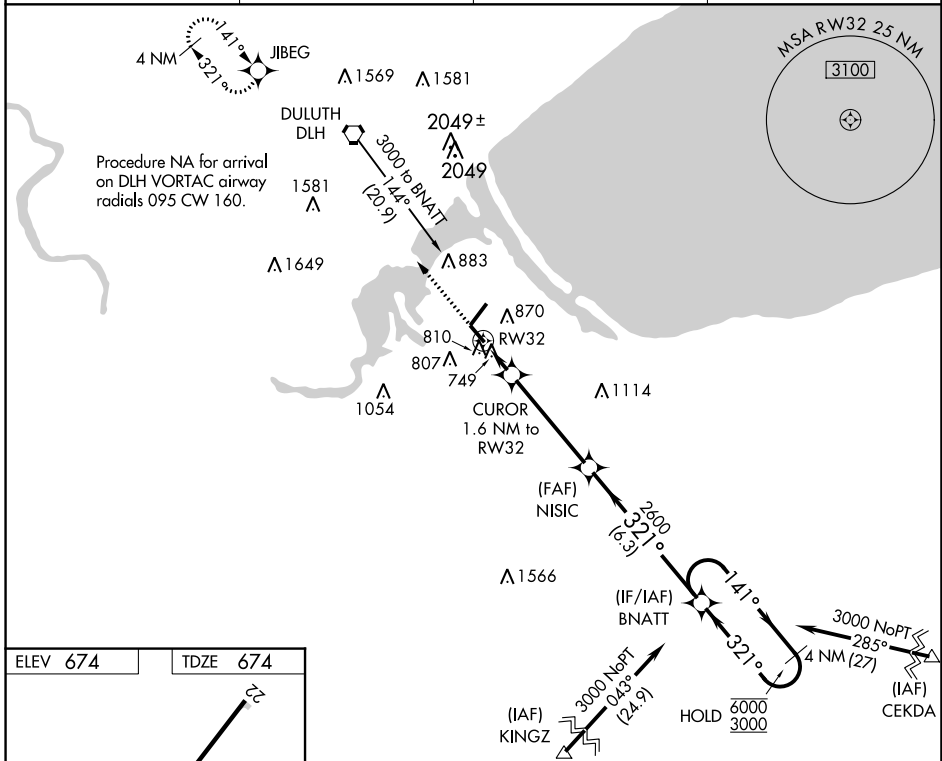
WAAS CH 72829 W32A	APP CRS 321°	Rwy Idg TDZE Apt Elev	4001 674 674
--	------------------------	-----------------------------	---

RNAV (GPS) RWY 32

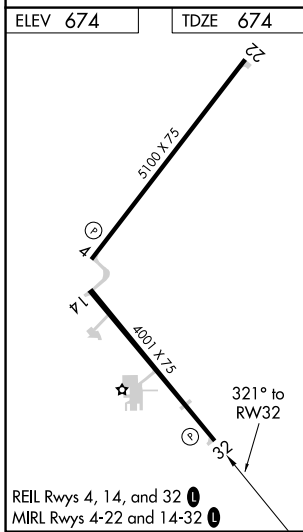
RICHARD I BONG (SUW)

RNP APCH.	MISSED APPROACH: Climb to 3100 direct JIBEG and hold.
-----------	---

AWOS-3 120.35	DULUTH APP CON 125.45 233.7	CLNC DEL 124.8	UNICOM 122.7 (CTAF) 0
-------------------------	---------------------------------------	--------------------------	---------------------------------



Procedure NA for arrival on DLH VORTAC airway radials 095 CW 160.



3100	JIBEG	VGS1 and descent angles not coincident (VGS1 Angle 4.00/TCH 41).		4 NM Holding Pattern
		CURSOR 1.6 NM to RW32	NISIC	BNATT
		0.9 NM to RW32	2600	141° → 6000 ← 321° 3000
		0.9 NM 0.7 NM	4.3 NM	6.3 NM
CATEGORY	A	B	C	D
LP MDA	1000-1 326 (400-1)			
LNAV MDA	1060-1	386 (400-1)	1060-1½	386 (400-1½)
CIRCLING	1220-1	546 (600-1)	1360-2 686 (700-2)	1360-2¼ 686 (700-2¼)

EC-3, 21 MAR 2024 to 18 APR 2024

EC-3, 21 MAR 2024 to 18 APR 2024