

APP CRS	Rwy Idg	5002
210°	TDZE	755
	Apt Elev	757

RNAV (GPS) Y RWY 23

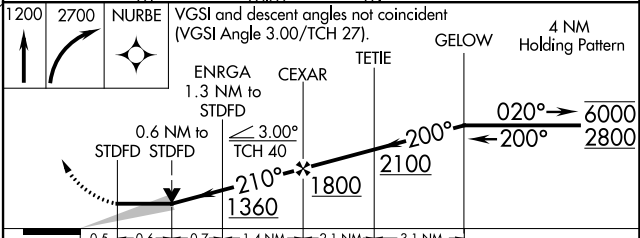
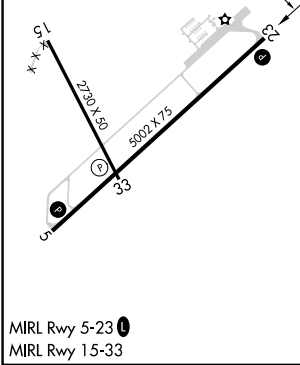
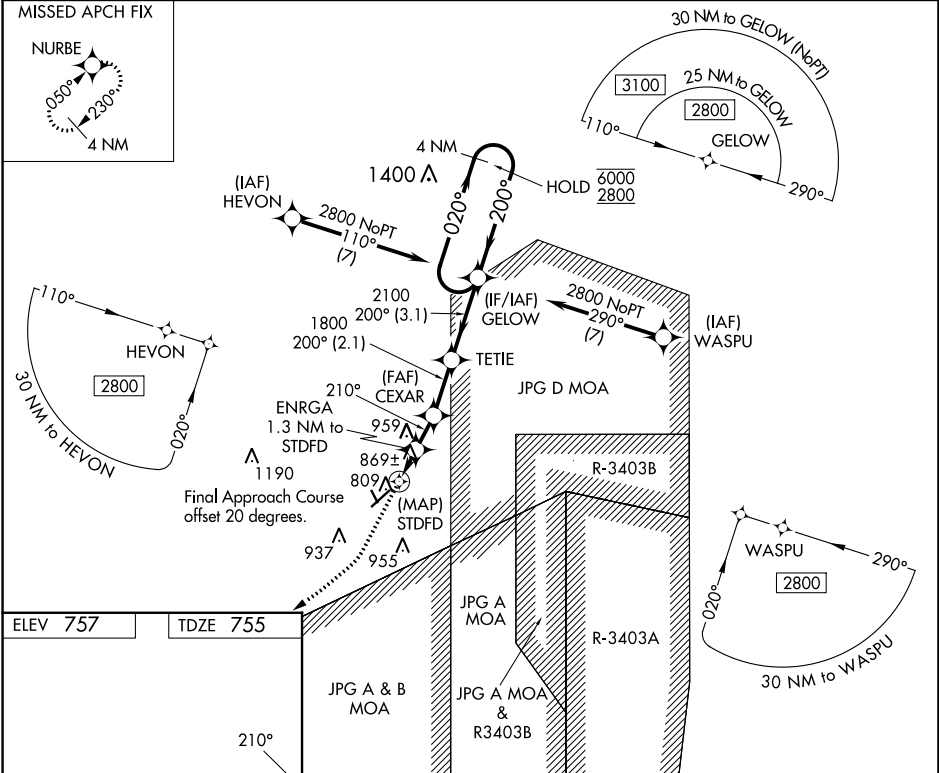
NORTH VERNON (OVO)

RNP APCH - GPS.

NA Circling to Rwy 15, 33 NA at night. When local altimeter setting not received, use Shelbyville altimeter setting and increase all MDAs 100 feet, and LNAV visibility Cat C ¾ SM, and Circling visibility Cat C ¼ SM. VDP NA when using Shelbyville Muni altimeter setting.

MISSED APPROACH:
Climb to 1200 then climbing right turn to 2700 direct NURBE and hold.

AWOS-3 120.625	INDIANAPOLIS CENTER 124.775 269.025	UNICOM 122.7 (CTAF)
--------------------------	---	-------------------------------



CATEGORY	A	B	C	D
LNAV MDA	1120-1 365 (400-1)			NA
CIRCLING	1180-1 423 (500-1)	1300-1 543 (600-1)	1300-1½ 543 (600-1½)	NA

EC-2, 21 MAR 2024 to 18 APR 2024

EC-2, 21 MAR 2024 to 18 APR 2024