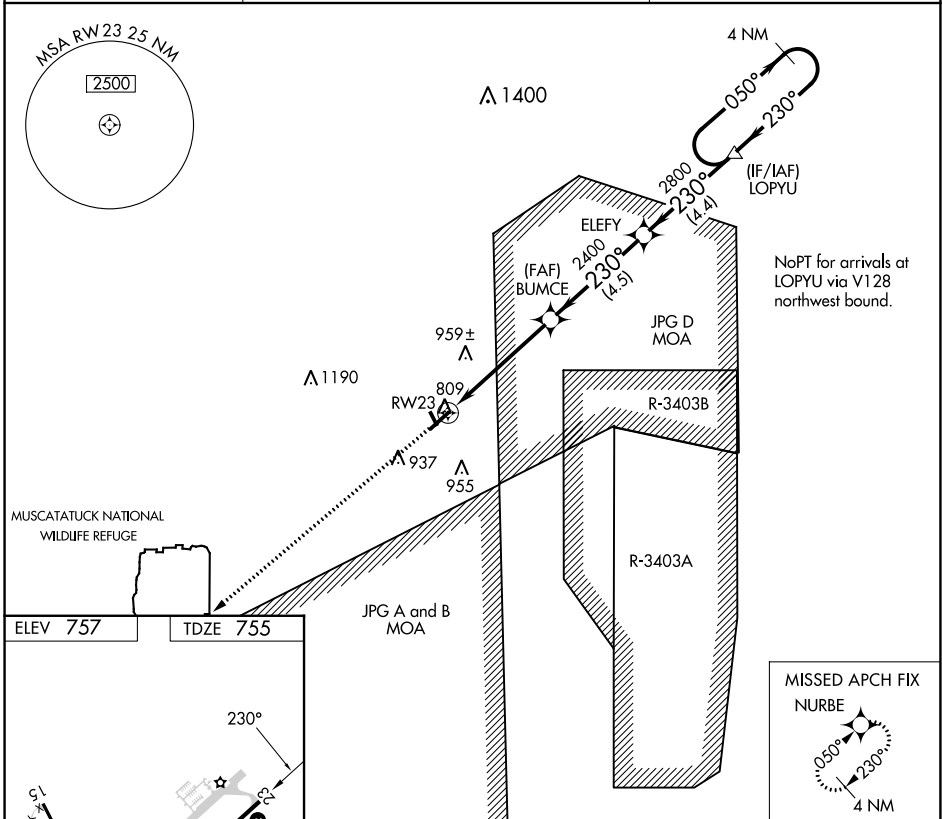


WAAS CH 63113 W23A	APP CRS 230°	Rwy Idg TDZE Apt Elev	5002 755 757
--	------------------------	-----------------------------	---

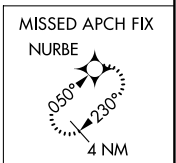
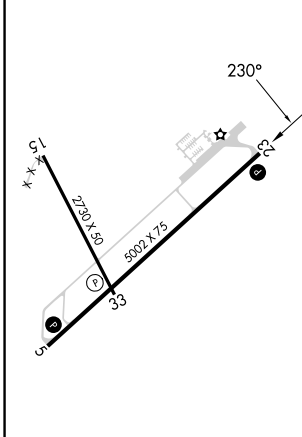
RNAV (GPS) Z RWY 23

NORTH VERNON (OVO)

<p>NA DME/DME RNP-0.3 NA. When local altimeter setting not received, use Shelbyville altimeter setting and increase all DA 84 feet and all visibility 1/4 mile.</p>	MISSED APPROACH: Climb to 2700 direct NURBE and hold.	
AWOS-3 120.625	INDIANAPOLIS CENTER 124.775 269.025	UNICOM 122.7 (CTAF)



ELEV 757	TDZE 755
----------	----------



2700	NURBE	VGS1 and RNAV glidepath not coincident (VGS1 Angle 3.00/TCH 27).		4 NM Holding Pattern
↑	✧	ELEYFY	LOPYU	
		BUMCE		
		RW23		
		2400	2800	2800
		230°	050°	230°
		5 NM	4.5 NM	4.4 NM
CATEGORY	A	B	C	D
LPV DA	1005-1 250 (300-1)			NA

GP 3.00° TCH 40

MIRL Rwy 5-23
MIRL Rwy 15-33

EC-2, 21 MAR 2024 to 18 APR 2024

EC-2, 21 MAR 2024 to 18 APR 2024