

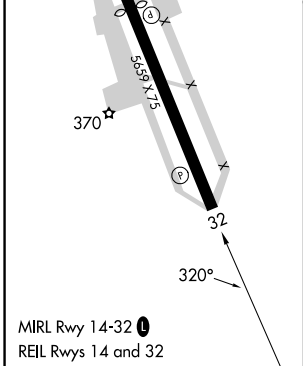
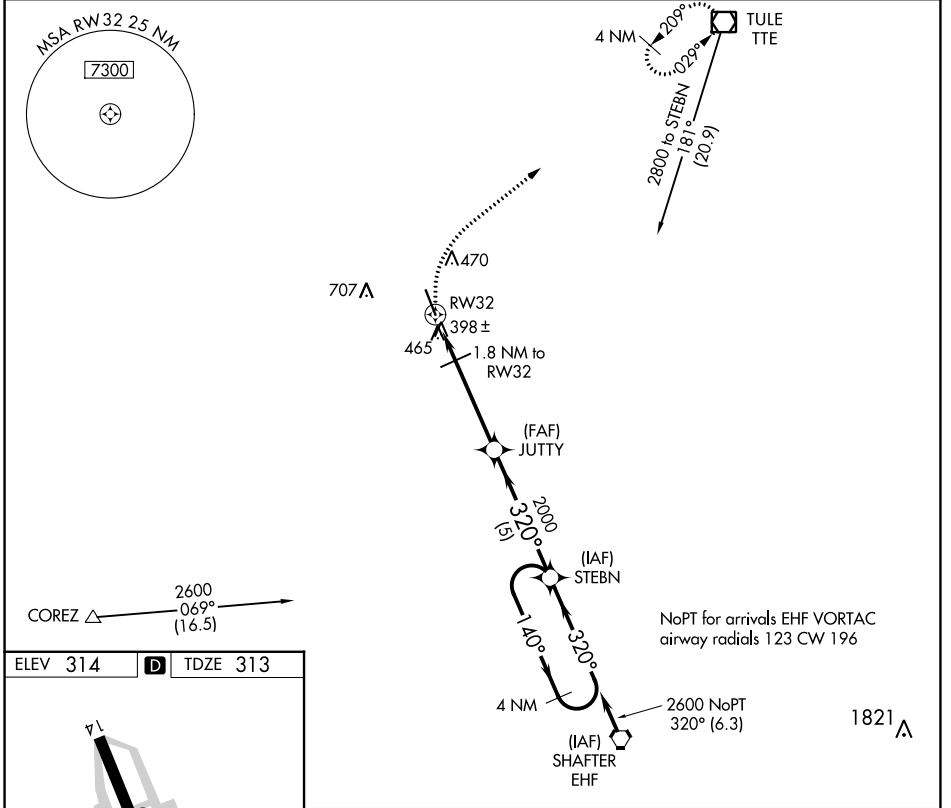
APP CRS <b>320°</b>	Rwy Idg <b>5659</b>
TDZE <b>313</b>	Apt Elev <b>314</b>

# GPS RWY 32

DELANO MUNI (DLO)

**NA** Circling not authorized Southwest of Rwy 14-32. MISSED APPROACH: Climbing right turn to 3000 direct TTE VOR/DME and hold.

AWOS-3P <b>119.55</b>	BAKERSFIELD APP CON ★ <b>118.9</b>	UNICOM <b>122.8 (CTAF) 0</b>
--------------------------	---------------------------------------	---------------------------------



3000 TTE	4 NM Holding Pattern			
1.2 NM to RW32		1.8 NM to RW32		2600
RW32		JUTTY		STEBN
2.98° TCH 40		2000		140° $\rightarrow$ 320° $\leftarrow$
-1.2 NM		-0.6 NM		5 NM
CATEGORY	A	B	C	D
S-32	720-1 407 (500-1)		720-1¼ 407 (500-1¼)	
CIRCLING	760-1 446 (500-1)	780-1 466 (500-1)	780-1½ 466 (500-1½)	880-2 566 (600-2)

SW-3, 21 MAR 2024 to 18 APR 2024

SW-3, 21 MAR 2024 to 18 APR 2024