

| | | | |
|--|------------------------|-----------------------------|---|
| WAAS CH 82327 W36A | APP CRS 002° | Rwy Idg TDZE Apt Elev | 4000 681 698 |
|--|------------------------|-----------------------------|---|

RNAV (GPS) RWY 36

JASPER COUNTY (R.Z.L.)

RNP APCH.

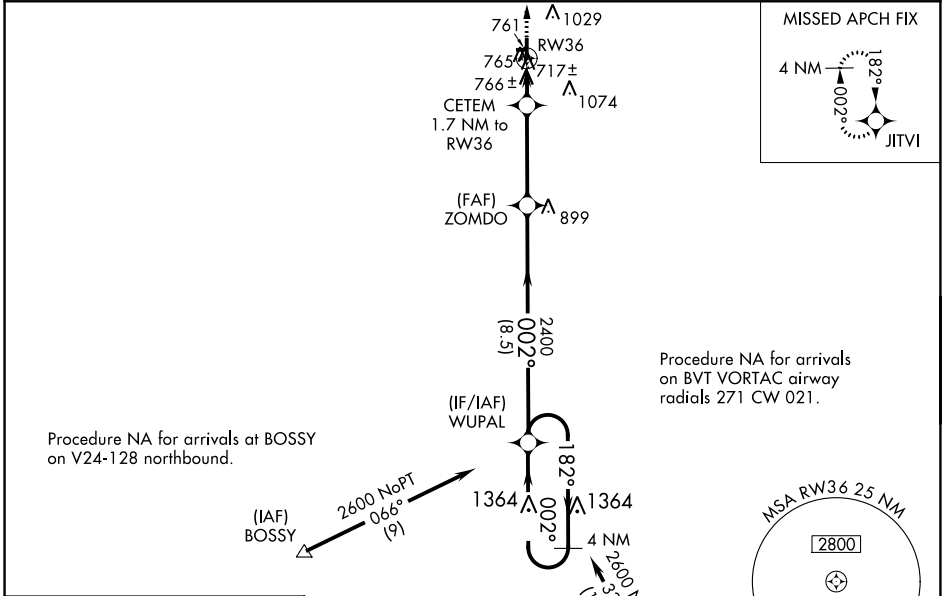
⚠ Baro-VNAV NA when using Knox altimeter setting. For uncompensated Baro-VNAV systems, LNAV/VNAV NA below -22°C or above 54°C. When local altimeter setting not received use Knox altimeter setting and increase all DA 78 feet and all MDA 80 feet, increase LPV and LNAV/VNAV all Cats visibility 1/8 mile and LNAV and Circling Cat C visibility 1/4 mile. Rwy 36 helicopter visibility reduction below 1 SM NA. Circling NA to Rwy's 9 and 27.

MISSED APPROACH:
Climb to 2600 direct
JITVI and hold.

AWOS-3P
119.175

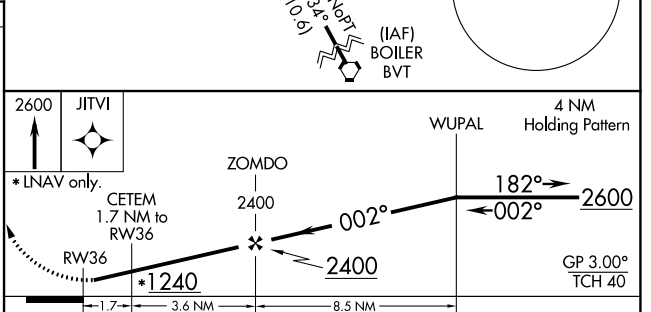
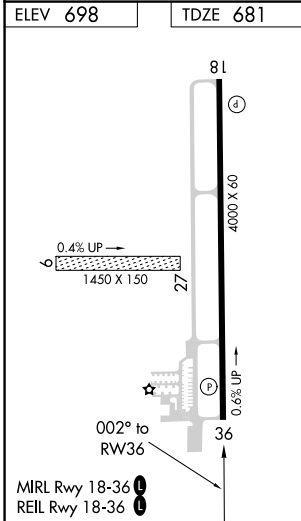
CHICAGO CENTER
132.5 284.7

UNICOM
122.8 (CTAF) 0



EC-2, 21 MAR 2024 to 18 APR 2024

EC-2, 21 MAR 2024 to 18 APR 2024



| CATEGORY | A | B | C | D |
|---------------|-----------------------|-----------------------|-------------------------|----|
| LPV DA | | 931-1 250 (300-1) | | NA |
| LNAV/ VNAV DA | | 947-1 266 (300-1) | | NA |
| LNAV MDA | | 1020-1 339 (400-1) | | NA |
| CIRCLING | 1120-1 422 (500-1) | 1380-1 682 (700-1) | 1440-2¼ 742 (800-2¼) | NA |