

WAAS CH 69212 W25A	APP CRS 252°	Rwy Idg TDZE Apt Elev	4703 913 913
--	------------------------	-----------------------------	---

RNAV (GPS) RWY 25

FLEMING-MASON (F'G'X)

RNP APCH - GPS.

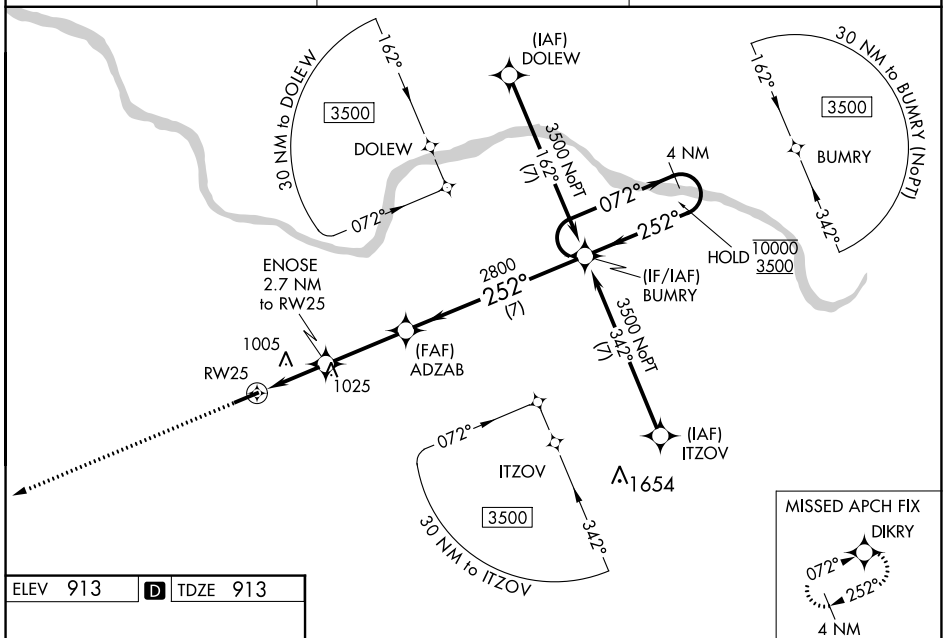
▼ Baro-VNAV and VDP NA when using Blue Grass altimeter setting. For uncompensated Baro-VNAV systems, LNAV/VNAV NA below -16°C or above 54°C. When local altimeter setting not received, use Lexington altimeter setting and increase LPV DA to 1240 feet and all visibilities ¼ SM; increase LNAV/VNAV DA to 1290 feet and all visibilities ¼ SM; increase all MDAs 140 feet and LNAV visibility Cat C/D ⅓ SM, and Circling visibility Cat C/D ½ SM.

MISSED APPROACH:
Climb to 3000 direct
DIKRY and hold.

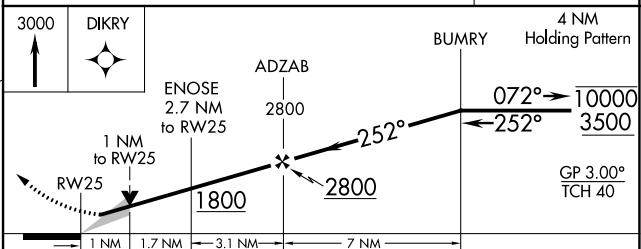
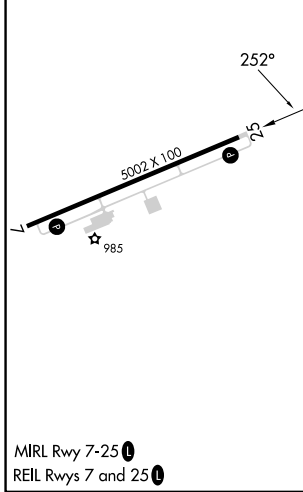
AWOS-3
118.125

INDIANAPOLIS CENTER
124.225 360.725

UNICOM
123.0(CTAF) 0



ELEV 913	D	TDZE 913
----------	----------	----------



CATEGORY	A	B	C	D
LPV DA		1113-¾	200 (200-¾)	
LNAV/VNAV DA		1163-¾	250 (300-¾)	
LNAV MDA		1260-1	347 (400-1)	
CIRCLING	1320-1	1380-1	1520-1¾	1520-2
	407 (500-1)	467 (500-1)	607 (700-1¾)	607 (700-2)

SE-1, 21 MAR 2024 to 18 APR 2024

SE-1, 21 MAR 2024 to 18 APR 2024