

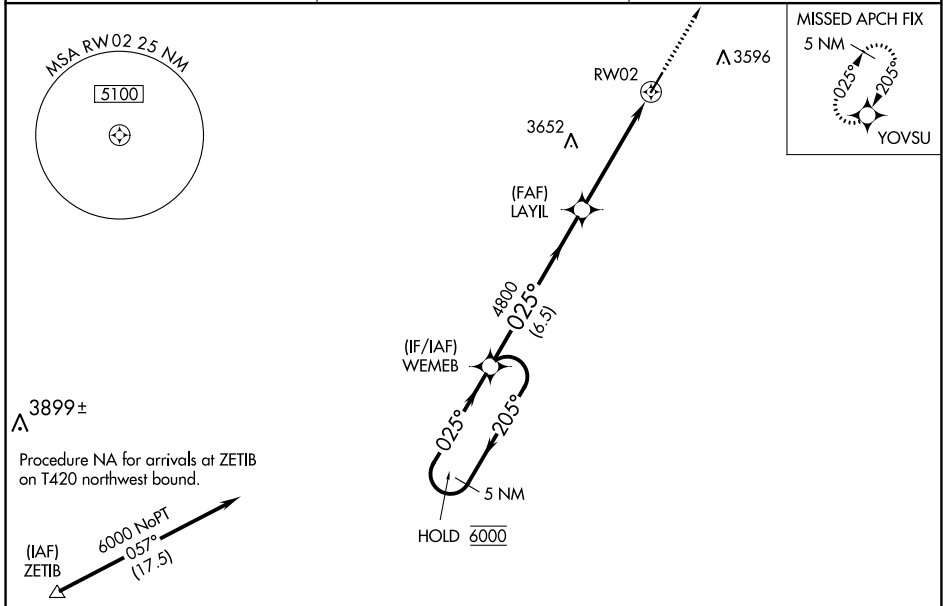
WAAS CH <b>82126</b> <b>W02A</b>	APP CRS <b>025°</b>	Rwy Idg <b>4698</b> TDZE <b>3205</b> Apt Elev <b>3205</b>
--	------------------------	---

# RNAV (GPS) RWY 2

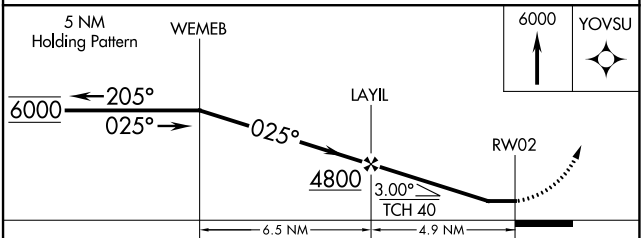
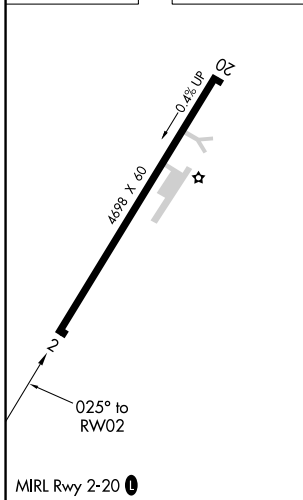
GRUVER MUNI (E19)

RNP APCH - GPS.		MISSED APPROACH: Climb to 6000 direct YOVSU and hold.
<p><b>▼</b> Procedure NA at night. Rwy 2 helicopter visibility reduction below 1 SM NA. Use Guymon altimeter setting, when not received, use Borger altimeter setting and increase all MDAs 40 feet.</p> <p><b>▲</b> NA</p>		

GUY ASOS <b>119.925</b>	ALBUQUERQUE CENTER <b>127.85 285.475</b>	CTAF <b>122.9</b>
----------------------------	---	----------------------



ELEV 3205	TDZE 3205
-----------	-----------



CATEGORY	A	B	C	D
LP MDA	3780-1	575 (600-1)		NA
LNAV MDA	3780-1	575 (600-1)		NA
<b>C</b> CIRCLING	3780-1	575 (600-1)		NA

SC-2, 21 MAR 2024 to 18 APR 2024

SC-2, 21 MAR 2024 to 18 APR 2024