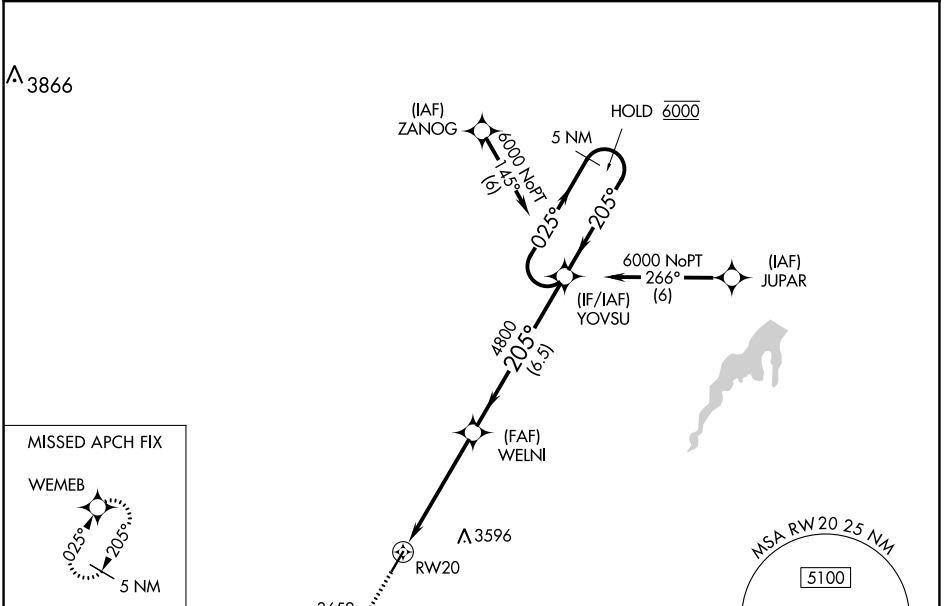


WAAS CH 42826 W20A	APP CRS 205°	Rwy Idg TDZE Apt Elev	4698 3196 3205
--	------------------------	-----------------------------	---

RNAV (GPS) RWY 20

GRUVER MUNI (E19)

RNP APCH - GPS.		MISSED APPROACH: Climb to 6000 direct WEMEB and hold.
▼ ▲ NA	Procedure NA at night. Rwy 20 helicopter visibility reduction below 1 SM NA. Use Guymon altimeter setting, when not received, use Borger altimeter setting and increase all MDAs 40 feet.	
GUY ASOS 119.925	ALBUQUERQUE CENTER 127.85 285.475	CTAF 122.9



ELEV 3205	TDZE 3196	A 3652	
<p>205° to RW20</p> <p>0.4% UP</p> <p>4698 x 60</p> <p>MIRL Rwy 2-20</p>		<p>6000 WEMEB</p> <p>↑</p>	<p>YOVSU 5 NM Holding Pattern</p> <p>025° → 6000</p> <p>← 205°</p>
<p>RW20</p> <p>4800</p> <p>3.00 TCH 40</p> <p>4.9 NM</p> <p>6.5 NM</p>		<p>WELNI</p> <p>205°</p>	
CATEGORY	A	B	C D
LP MDA	3720-1	524 (600-1)	NA
LNAV MDA	3720-1	524 (600-1)	NA
CIRCLING	3720-1 515 (600-1)	3740-1 535 (600-1)	NA

SC-2, 21 MAR 2024 to 18 APR 2024

SC-2, 21 MAR 2024 to 18 APR 2024