

WAAS CH <b>56305</b> <b>W01A</b>	APP CRS <b>007°</b>	Rwy Idg TDZE <b>1481</b> Apt Elev <b>1497</b>
--	------------------------	---

# RNAV (GPS) RWY 1

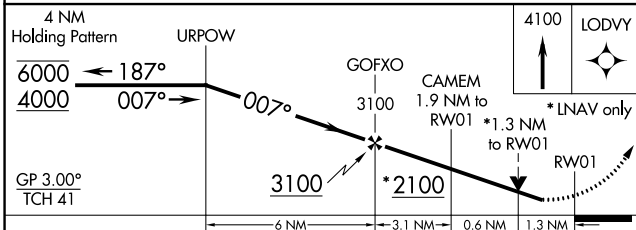
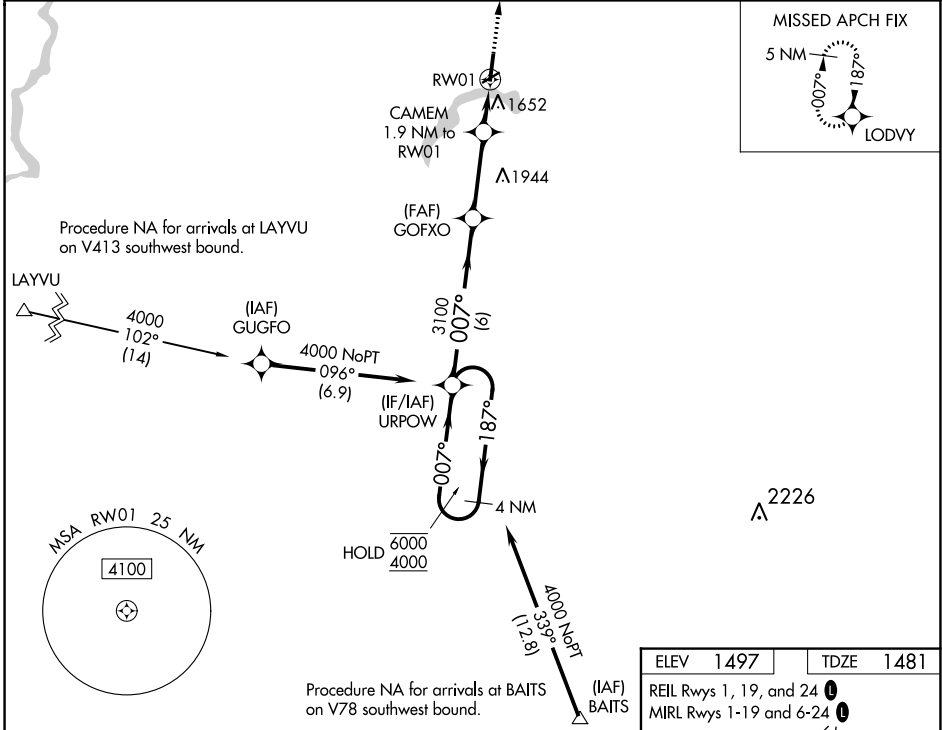
PRICE COUNTY (PBH)

RNP APCH.

**▼** Circling Rwy 6, 24 NA at night. Rwy 1 helicopter visibility reduction below 3/4 SM NA.  
**▲** For uncompensated Baro-VNAV systems, LNAV/VNAV NA below -17°C or above 54°C.

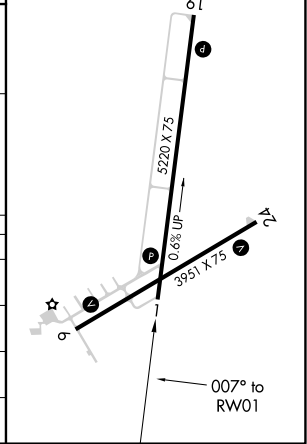
**MISSED APPROACH:**  
Climb to 4100 direct LODVY and hold.

AWOS-3 <b>125.875</b>	MINNEAPOLIS CENTER <b>133.65 281.5</b>	UNICOM <b>122.8 (CTAF) 1</b>
--------------------------	---	---------------------------------



ELEV 1497	TDZE 1481
-----------	-----------

REIL Rws 1, 19, and 24 1  
MIRL Rws 1-19 and 6-24 1



CATEGORY	A	B	C	D
LPV DA	1731-1		250 (300-1)	
LNAV/VNAV DA	1813-1 1/8		332 (400-1 1/8)	
LNAV MDA	1920-1 439 (500-1)		1920-1 1/4 439 (500-1 1/4)	
<b>C</b> CIRCLING	1960-1 463 (500-1)		2000-1 1/2 503 (600-1 1/2) 2260-2 1/2 763 (800-2 1/2)	

EC-3, 21 MAR 2024 to 18 APR 2024

EC-3, 21 MAR 2024 to 18 APR 2024