

WAAS CH <b>97405</b> <b>W19A</b>	APP CRS <b>187°</b>	Rwy Idg TDZE Apt Elev	<b>5220</b> <b>1497</b> <b>1497</b>
--	------------------------	-----------------------------	---

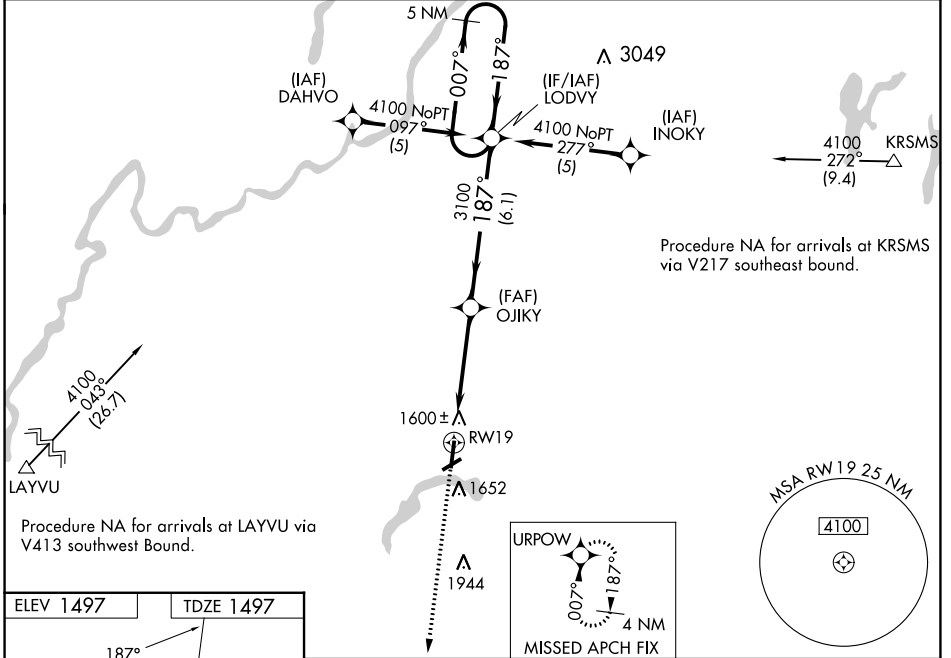
# RNAV (GPS) RWY 19

PRICE COUNTY (PBH)

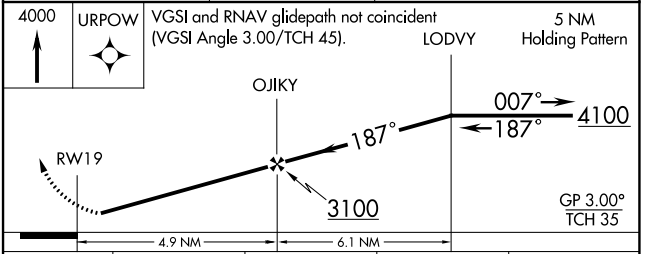
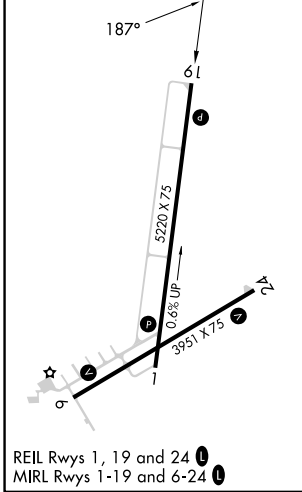
**⚠** Baro-VNAV NA when using Minocqua-Woodruff altimeter setting. When local altimeter setting not received, use Minocqua-Woodruff altimeter setting and increase all DA 91 feet and all Cats visibility  $\frac{3}{8}$  mile, increase all MDA 100 feet and all Cats C and D visibility  $\frac{1}{4}$  mile. For uncompensated Baro-VNAV systems, LNAV/VNAV NA below -17°C (2°F) or above 34°C (93°F). DME/DME RNP-0.3 NA. Helicopter visibility reduction below  $\frac{3}{4}$  SM NA. Night landing: Rwy 6, 24 NA.

**⚠** MISSED APPROACH: Climb to 4000 direct URPOW and hold.

AWOS-3 <b>125.875</b>	MINNEAPOLIS CENTER <b>133.65 281.5</b>	UNICOM <b>122.8 (CTAF) 0</b>
--------------------------	---	---------------------------------



ELEV 1497	TDZE 1497
-----------	-----------



CATEGORY	A	B	C	D
LPV DA		1843-1 $\frac{1}{8}$	346 (400-1 $\frac{1}{8}$ )	
LNAV/VNAV DA		1886-1 $\frac{1}{8}$	389 (400-1 $\frac{1}{8}$ )	
LNAV MDA	1920-1	423 (500-1)	1920-1 $\frac{1}{4}$	423 (500-1 $\frac{1}{4}$ )
CIRCLING	2100-1	603 (700-1)	2100-1 $\frac{3}{4}$ 603 (700-1 $\frac{3}{4}$ )	2260-2 $\frac{1}{2}$ 763 (800-2 $\frac{1}{2}$ )

EC-3, 21 MAR 2024 to 18 APR 2024

EC-3, 21 MAR 2024 to 18 APR 2024