

APP CRS	Rwy Idg	N/A
<b>239°</b>	TDZE	N/A
	Apt Elev	<b>1395</b>

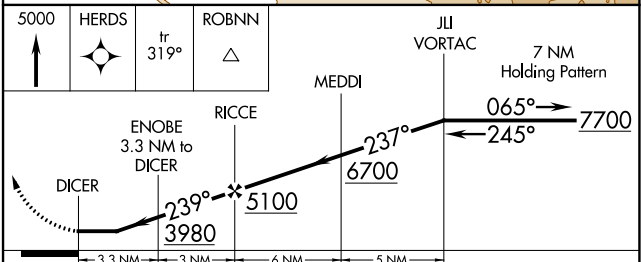
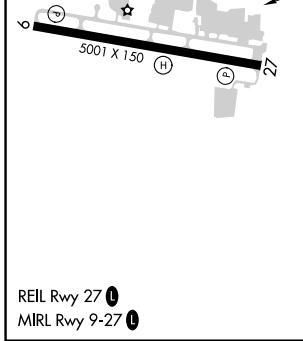
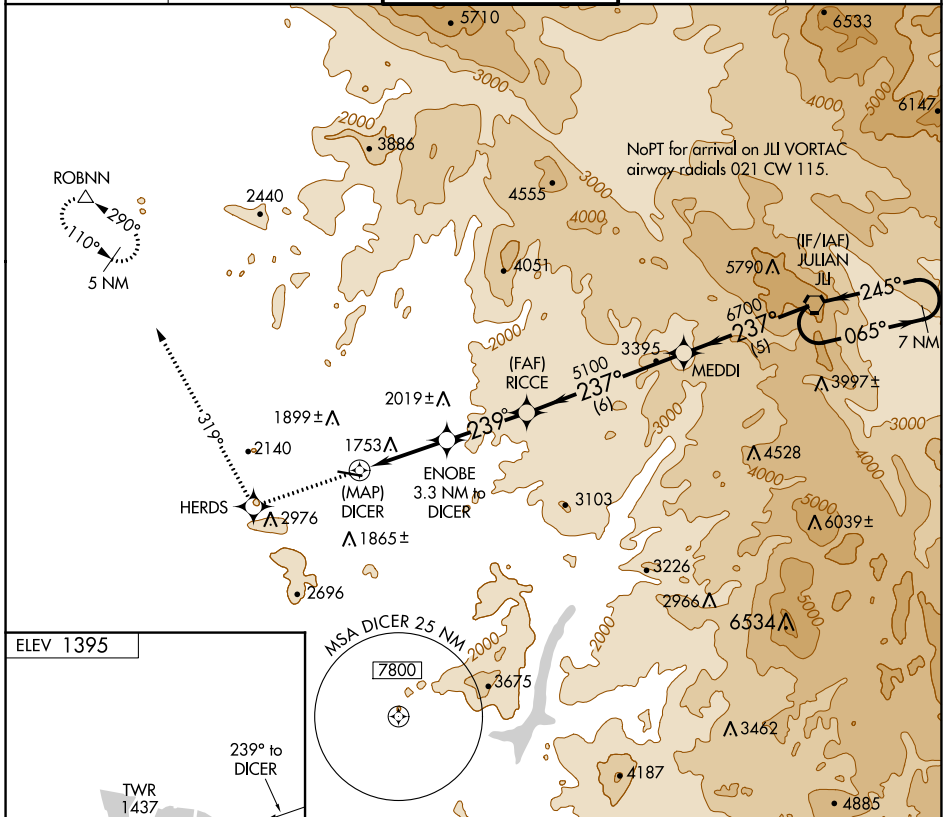
# RNAV (GPS)-B

RAMONA (R.NM)

**⚠** DME/DME RNP-0.3 NA.  
**⚠** Circling NA north of Rwy 9-27.  
 When local altimeter setting not received, use Gillespie Fld altimeter setting and increase all MDA 180 feet.

**MISSED APPROACH:** Climb to 5000 direct HERDS and via track 319° to ROBNN and hold.

ATIS <b>132.025</b>	SOCAL APP CON <b>132.2 269.1</b>	<b>RAMONA TOWER ★</b> <b>119.875 (CTAF) ①</b>	GND CON <b>121.65</b>	UNICOM <b>122.95</b>
------------------------	-------------------------------------	--	--------------------------	-------------------------



CATEGORY	A	B	C	D
CIRCLING	2780-1¼ 1385 (1400-1¼)	2780-1½ 1385 (1400-1½)	3180-3 1785 (1800-3)	NA

SW-3, 21 MAR 2024 to 18 APR 2024

SW-3, 21 MAR 2024 to 18 APR 2024