

MILLER, SOUTH DAKOTA

AL-6698 (FAA)

23278

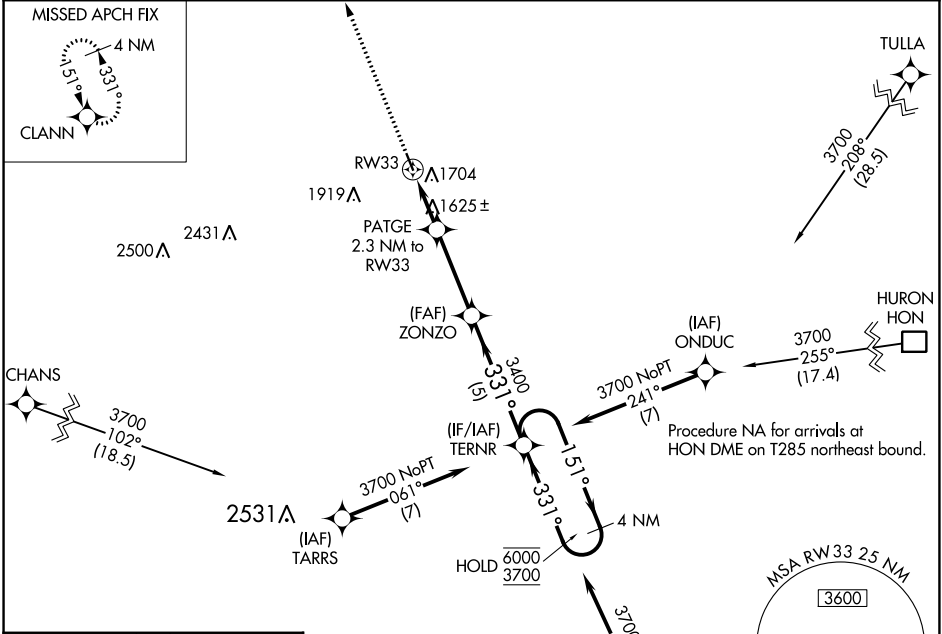
WAAS CH 97522 W33A	APP CRS 331°	Rwy Idg TDZE Apt Elev	3601 1570 1570
----------------------------------------	------------------------	-----------------------------	-------------------------------------------

RNAV (GPS) RWY 33

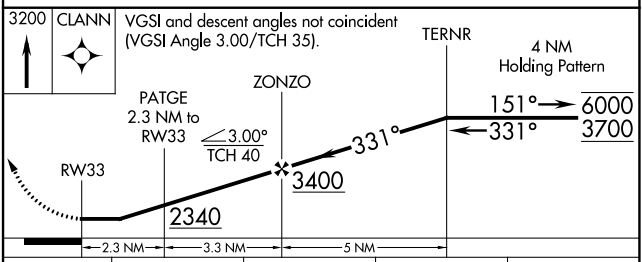
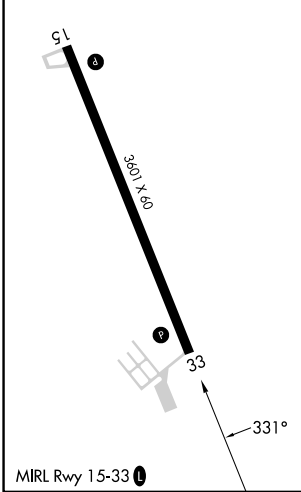
MILLER MUNI (MKA)

RNP APCH - GPS.	MISSED APPROACH: Climb to 3200 direct CLANN and hold.
Rwy 33 helicopter visibility reduction below 3/4 SM NA. Use Huron altimeter setting.	

HON ASOS 118.125	MINNEAPOLIS CENTER 125.1 269.1	CTAF 122.9	GCO 121.725	122.80
----------------------------	------------------------------------------	----------------------	-----------------------	---------------



ELEV 1570	TDZE 1570
-----------	-----------



CATEGORY	A	B	C	D
LP MDA	2000-1	430 (500-1)	NA	
LNAV MDA	2080-1	510 (600-1)	NA	
CIRCLING	2180-1 610 (700-1)	2220-1 650 (700-1)	NA	

MILLER, SOUTH DAKOTA
Amdt 1C 05OCT23

44°32'N-98°57'W

RNAV (GPS) RWY 33

MILLER MUNI (MKA)

NC-1, 21 MAR 2024 to 18 APR 2024

NC-1, 21 MAR 2024 to 18 APR 2024