

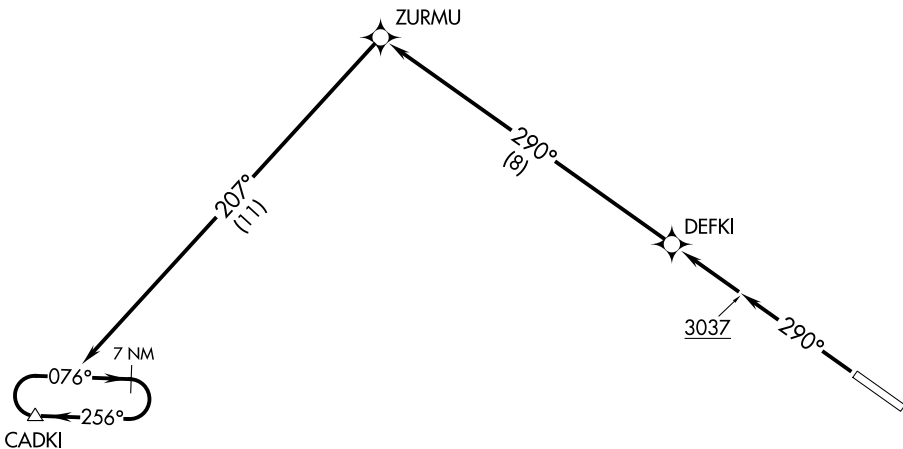
(CADKI1.CADKI) 20030

CADKI ONE DEPARTURE (OBSTACLE) (RNAV)

AL-6807 (FAA)

NAMPA MUNI (MAN)
NAMPA, IDAHO

BIG SKY DEP CON
119.6 269.4
CTAF
122.7



NOTE: RNAV 1.

NOTE: GPS required.

TAKEOFF MINIMUMS

Rwy 29: Standard.

TAKEOFF OBSTACLE NOTES

Rwy 29: Poles beginning 38' from DER, 269' left of centerline, up to 38' AGL/2565' MSL.

Building, and vehicles on roads beginning 83' from DER, 289' right of centerline, up to 25' AGL/2561' MSL.

Trees, and pole beginning 560' from DER, 455' right of centerline, up to 68' AGL/2599' MSL.

Building, and pole beginning 1050' from DER, 154' left of centerline, up to 48' AGL/2575' MSL.

Tree, elevator, and hopper beginning 1209' from DER, 327' left of centerline, up to 81' AGL/2602' MSL.

NOTE: Chart not to scale.

DEPARTURE ROUTE DESCRIPTION

TAKEOFF RUNWAY 29: Climb heading 290° to 3037, then direct DEFKI, then on track 290° to ZURMU, then on track 207° to CADKI, then continue climb in CADKI holding pattern, expect further clearance when reaching 8000.

CADKI ONE DEPARTURE (OBSTACLE) (RNAV)

(CADKI1.CADKI) 12OCT17

NAMPA, IDAHO
NAMPA MUNI (MAN)

NW-1, 21 MAR 2024 to 18 APR 2024

NW-1, 21 MAR 2024 to 18 APR 2024