

APP CRS 290°	Rwy Idg TDZE Apt Elev	N/A N/A 2537
------------------------	-----------------------------	---

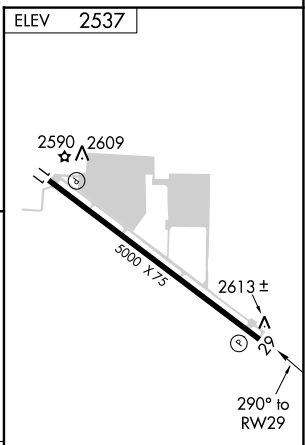
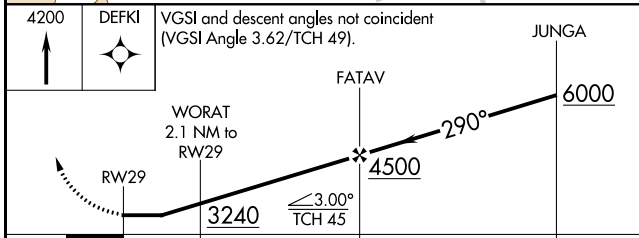
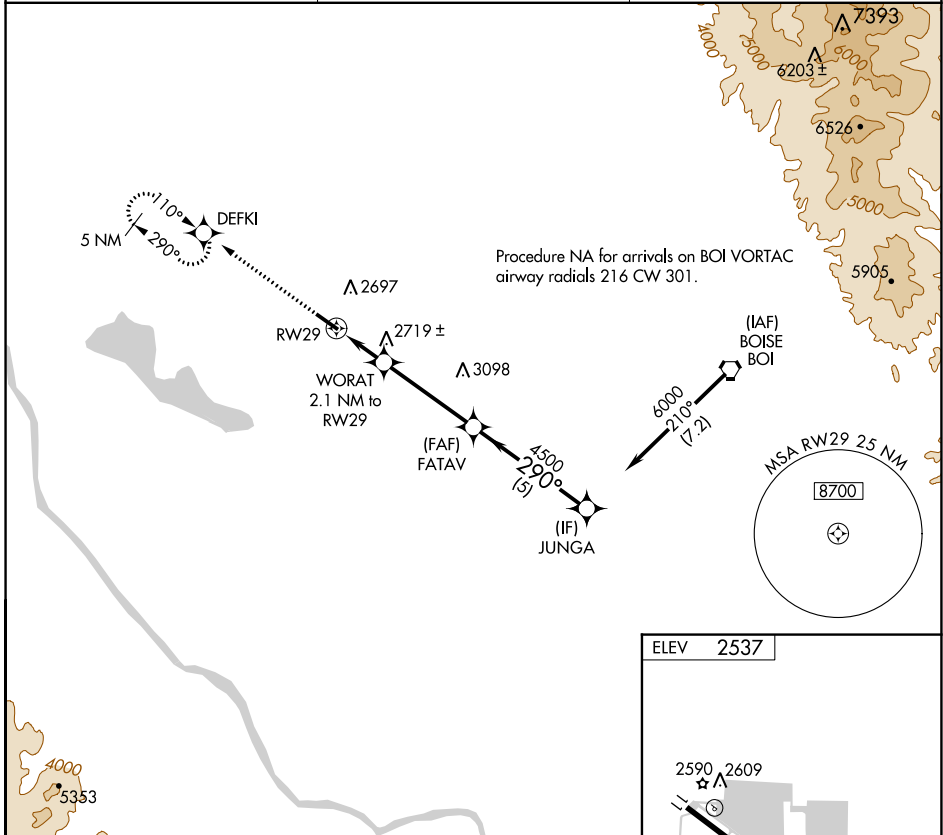
RNAV (GPS)-B

NAMPA MUNI (MAN)

⚠ Night landing: Rwy 29, operational VGSI required, remain on or above VGSI glidepath until threshold. DME/DME RNP -0.3 NA. When local altimeter setting not received, use Caldwell Industrial altimeter setting and increase all MDA 40 feet and visibility Cat C ¼ SM. Helicopter visibility reduction below 1 SM NA.

⚠ MISSED APPROACH: Climb to 4200 direct DEFKI and hold.

AWOS-3 118.325	BIG SKY APP CON 119.6 269.4	UNICOM 122.7 (CTAF) 0
--------------------------	---------------------------------------	---------------------------------



CATEGORY	A	B	C	D
C CIRCLING	3060-1	523 (600-1)	3100-1½ 563 (600-1½)	3220-2¼ 683 (700-2¼)

MIRL Rwy 11-29 0

NW-1, 21 MAR 2024 to 18 APR 2024

NW-1, 21 MAR 2024 to 18 APR 2024