

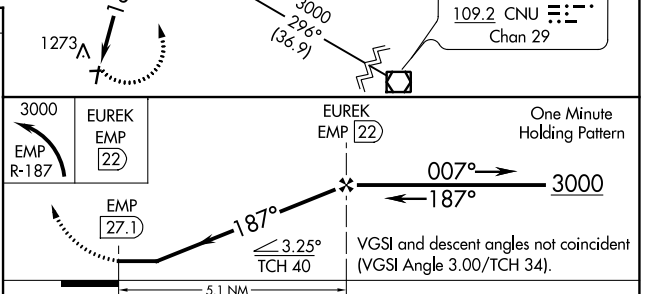
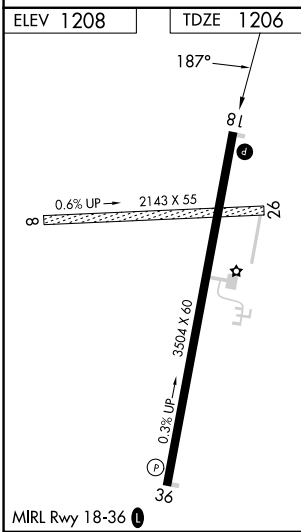
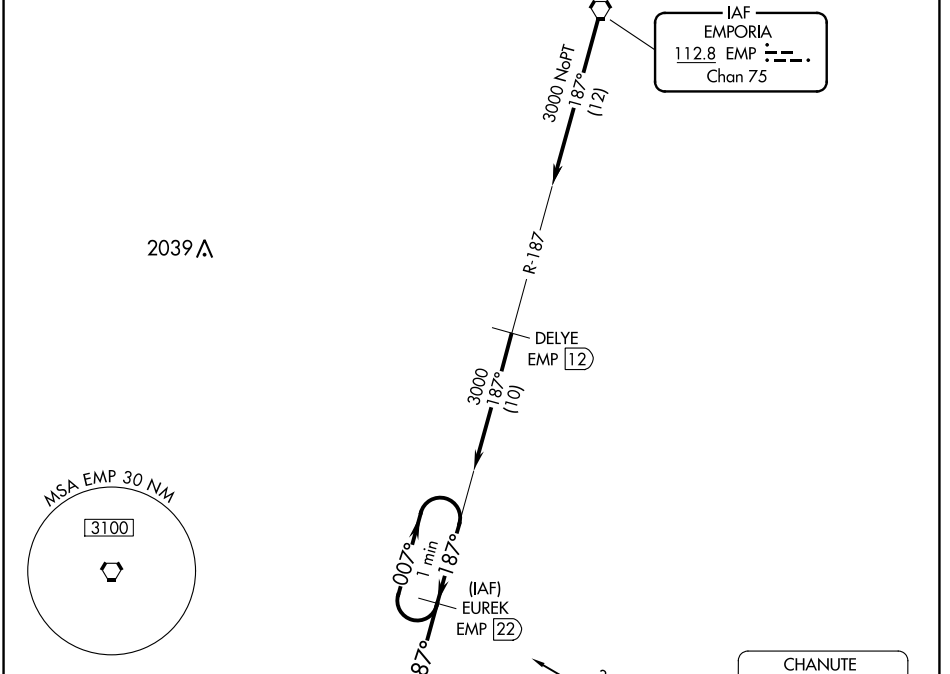
VORTAC EMP <b>112.8</b> Chan <b>75</b>	APP CRS <b>187°</b>	Rwy ldg <b>3504</b> TDZE <b>1206</b> Apt Elev <b>1208</b>
--	------------------------	--

# VOR/DME RWY 18

LT WILLIAM M MILLIKEN (13K)

**NA** Obtain local altimeter on CTAF; when not received, use Wichita altimeter setting. Circling NA to Rwys 8 and 26. MISSED APPROACH: Climbing left turn to 3000 via EMP R-187 to EUREK/22 DME and hold.

AWOS-3PT <b>120.975</b>	KANSAS CITY CENTER <b>120.2 323.2</b>	UNICOM <b>122.8 (CTAF)</b>
----------------------------	--	-------------------------------



CATEGORY	A	B	C	D
S-18	1820-1 614 (700-1)	1820-1¼ 614 (700-1¼)	1820-1¾ 614 (700-1¾)	NA
CIRCLING	1820-1 612 (700-1)	1820-1¼ 612 (700-1¼)	2060-2½ 852 (900-2½)	NA
WICHITA DWIGHT D EISENHOWER NTL ALTIMETER SETTING MINIMUMS				
S-18	1980-1 774 (800-1)	1980-1¼ 774 (800-1¼)	1980-2½ 774 (800-2½)	NA
CIRCLING	1980-1 772 (800-1)	1980-1¼ 772 (800-1¼)	2220-3 1012 (1100-3)	NA

NC-2, 21 MAR 2024 to 18 APR 2024

NC-2, 21 MAR 2024 to 18 APR 2024