

APP CRS	Rwy Idg	<b>2697</b>
<b>320°</b>	TDZE	<b>763</b>
	Apt Elev	<b>763</b>

# RNAV (GPS) RWY 32

EPHRAIM/GIBRALTAR (3D2)

RNP APCH - GPS.

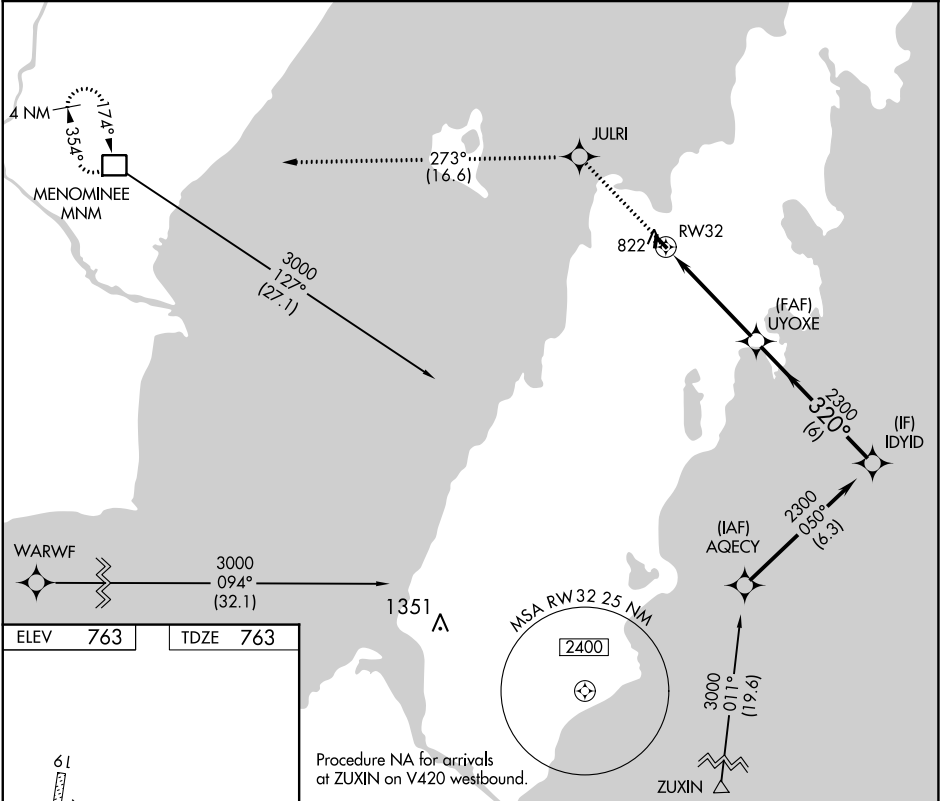
MISSED APPROACH: Climb to 3000 direct JULRI and on track 273° to MNM DME and hold.

Procedure NA at night. Rwy 32 helicopter visibility reduction below 3/4 SM NA.

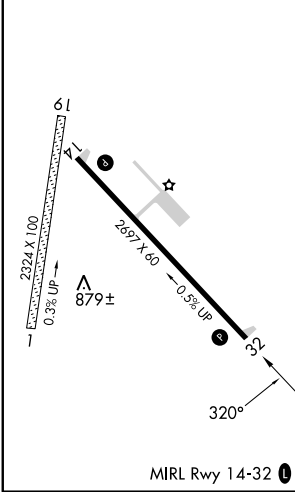
AWOS-3PT  
**124.175**

GREEN BAY APP CON★  
**120.3 338.2**

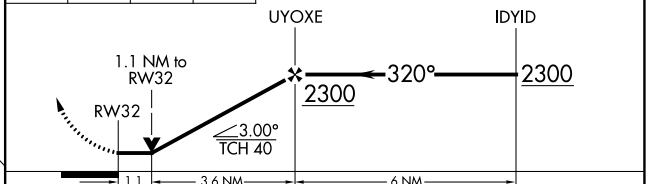
UNICOM  
**123.0 (CTAF) 0**



ELEV	763	TDZE	763
------	-----	------	-----



3000	JULRI	tr 273°	MNM	VGSI and descent angles not coincident (VGSI Angle 3.00/TCH 25).



CATEGORY	A	B	C	D
LNAV MDA	1120-1	357 (400-1)		NA

EC-3, 21 MAR 2024 to 18 APR 2024

EC-3, 21 MAR 2024 to 18 APR 2024