

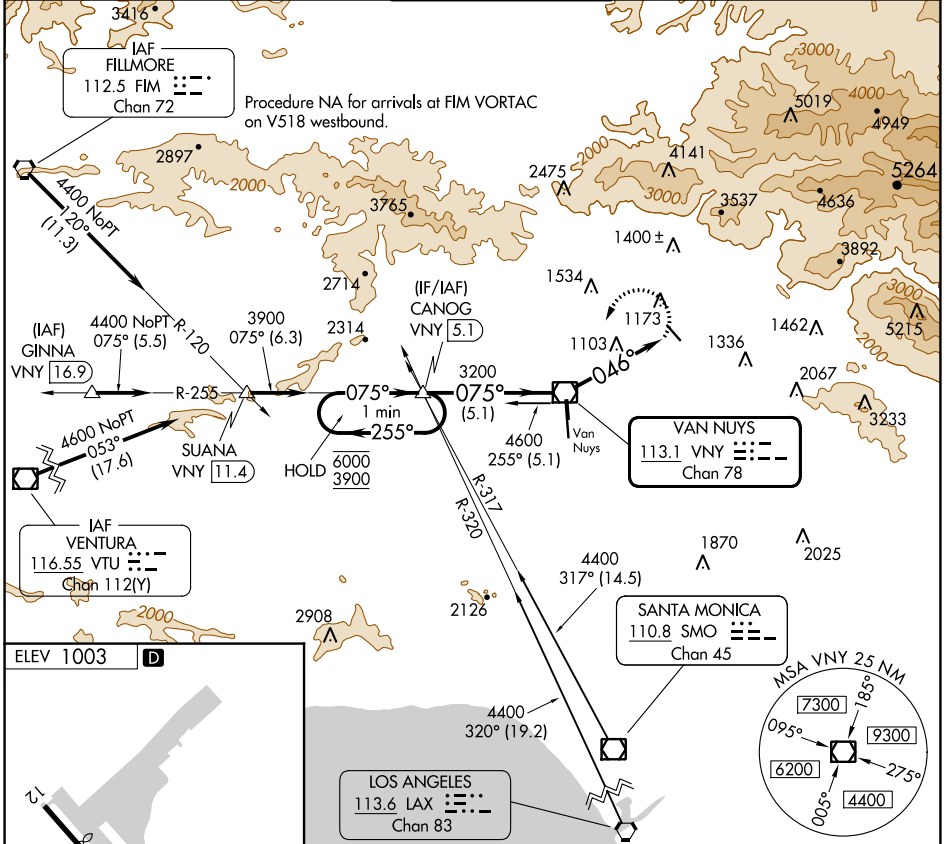
VOR/DME VNY <b>113.1</b> Chan 78	APP CRS <b>046°</b>	Rwy Idg TDZE Apt Elev <b>N/A</b> <b>N/A</b> <b>1003</b>
--	------------------------	--

**VOR-A**  
WHITEMAN (WHP)

**⚠** When local altimeter setting not received, use Burbank altimeter setting. Procedure NA at night.

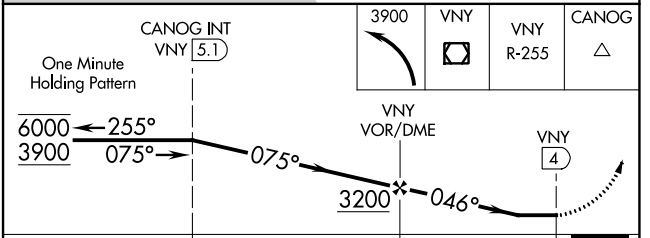
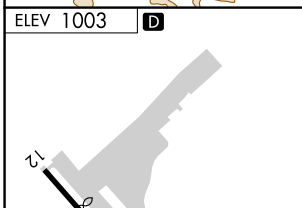
**⚠** MISSED APPROACH: Climbing left turn to 3900 direct VNY VOR/DME then on VNY VOR/DME R-255 to CANOG INT/ 5.1 DME and hold.

ATIS <b>132.1</b>	SOCAL APP CON <b>120.4 360.6</b> (NORTH) <b>134.2 338.2</b> (WEST)	WHITEMAN TOWER * <b>135.0</b> (CTAF)	GND CON <b>125.0</b>	UNICOM <b>122.95</b>
----------------------	--	---	-------------------------	-------------------------



SW-3, 21 MAR 2024 to 18 APR 2024

SW-3, 21 MAR 2024 to 18 APR 2024



ELEV 1003	<b>D</b>
REIL Rwys 12 and 30 MIRL Rwy 12-30	
FAF to MAP 4 NM	
Knots	60 90 120 150 180
Min:Sec	4:00 2:40 2:00 1:36 1:20

CATEGORY	A	B	C	D
<b>C</b> CIRCLING	1760-1 757 (800-1)	1860-1¼ 857 (900-1¼)	2200-3 1197 (1200-3)	NA