

| | | |
|--|------------------------|---|
| WAAS CH 56639 W11A | APP CRS 114° | Rwy ldg 2713 TDZE 15 Apt Elev 15 |
|--|------------------------|---|

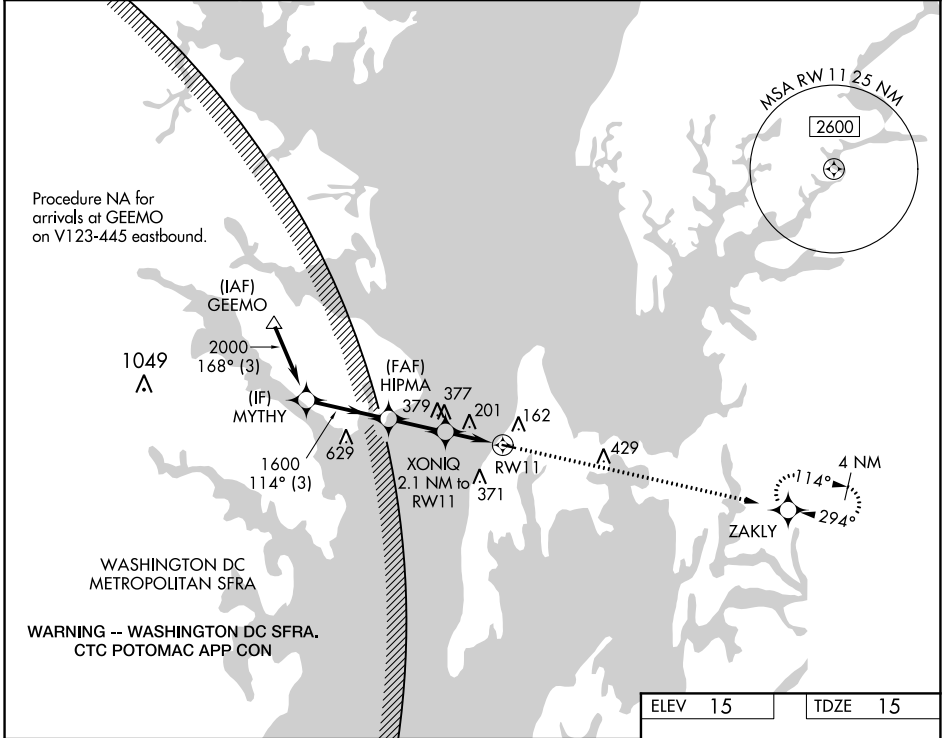
RNAV (GPS) RWY 11

BAY BRIDGE (W29)

RNP APCH. MISSED APPROACH: Climb to 2100 direct ZAKLY and hold.

For uncompensated Baro-VNAV systems, LNAV/VNAV NA below -15°C or above 54°C.

| | | |
|--------------------------|---|-----------------------------------|
| AWOS-3 120.575 | POTOMAC APP CON 119.0 282.275 | UNICOM 122.725 (CTAF) 0 |
|--------------------------|---|-----------------------------------|



NE-3, 21 MAR 2024 to 18 APR 2024

NE-3, 21 MAR 2024 to 18 APR 2024

| | | | |
|--|----------------------|----------------------|----|
| ELEV 15 | | TDZE 15 | |
| <p>VGSI and RNAV glidepath not coincident (VGSI Angle 3.00/TCH 39).</p> <p>2100 ZAKLY</p> <p>*LNAV only.</p> | | | |
| | | | |
| CATEGORY | A | B | C |
| LPV DA | 265-1 | 250 (300-1) | NA |
| LNAV/VNAV DA | 489-1 3/8 | 474 (500-1 3/8) | NA |
| LNAV MDA | 460-1 | 445 (500-1) | NA |
| CIRCLING | 500-1 485 (500-1) | 800-1 785 (800-1) | NA |

REIL Rwy 11 and 29 0
MIRL Rwy 11-29 0