


LOC/DME I-BTR 110.3 Chan 40	APP CRS 133°	Rwy Idg 5720 TDZE 67 Apt Elev 70
---	------------------------	---

ILS or LOC RWY 13

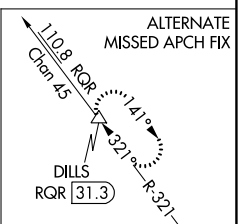
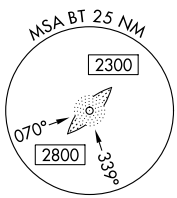
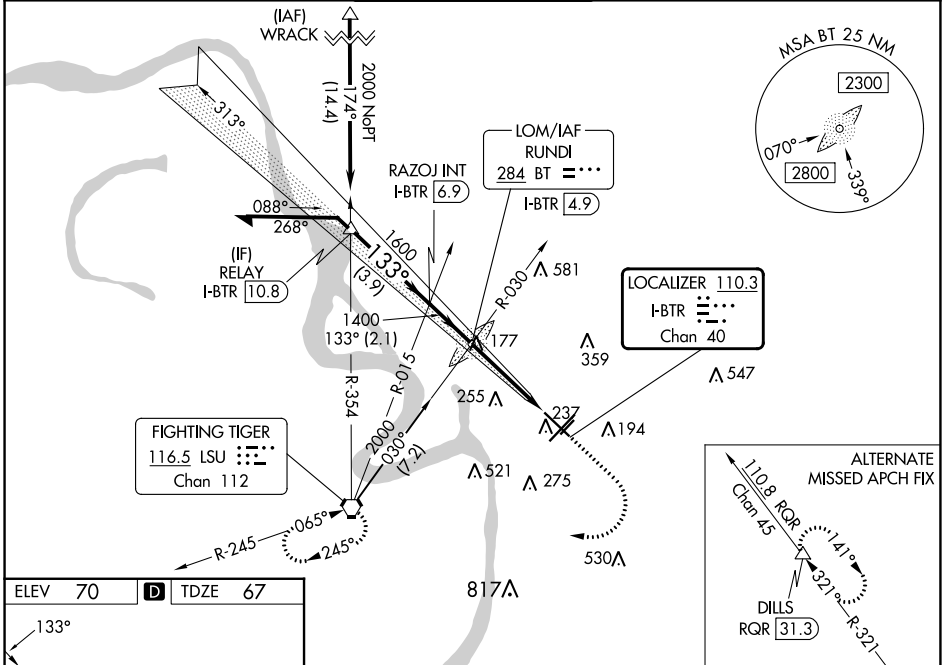
BATON ROUGE METRO, RYAN FLD (BTR)

ASR For inop MALSRR when using Hammond altimeter setting, increase S-ILS 13 all Cats visibility to $\frac{3}{8}$ mile, and S-LOC 13 visibility to $\frac{1}{3}$ mile. VDP NA with Hammond altimeter setting. When local altimeter setting not received, use Hammond altimeter setting and increase all DA 91 feet and all MDA 100 feet, increase S-LOC 13 Cats C and D visibility $\frac{1}{4}$ mile, increase Circling Cats C and D visibility $\frac{1}{4}$ mile. For inop MALSRR, increase S-LOC 13 Cats C and D to $\frac{1}{8}$ mile.

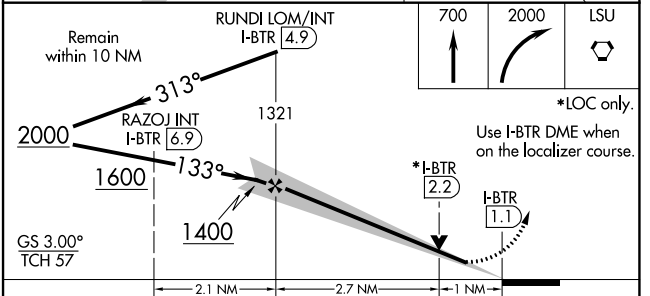
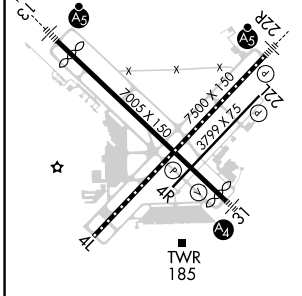
MALSRR 

MISSED APPROACH: Climb to 700 then climbing right then to 2000 direct LSU VORTAC and hold.

ATIS 125.2	BATON ROUGE APP CON * 120.3 278.3	RYAN TOWER * 118.45 (CTAF) 257.8	GND CON 121.9	CLNC DEL 119.4	UNICOM 122.95
----------------------	---	--	-------------------------	--------------------------	-------------------------



ELEV 70	D	TDZE 67
---------	----------	---------



TDZ/CL Rwy 22R HIRL Rwy 13-31 and 4L-22R MIRL Rwy 4R-22L	FAF to MAP 3.7 NM
Knots	60 90 120 150 180
Min:Sec	3:42 2:28 1:51 1:29 1:14
CIRCLING	560-1 490 (500-1) 660-1 590 (600-1) 780-2 710 (800-2) 840-2 770 (800-2)

SC-4, 18 APR 2024 to 16 MAY 2024

SC-4, 18 APR 2024 to 16 MAY 2024