

LOC/DME I-CLZ <b>108.7</b> Chan <b>24</b>	APP CRS <b>223°</b>	Rwy Idg <b>7500</b> TDZE <b>70</b> Apt Elev <b>70</b>
---	------------------------	---

# ILS or LOC/DME RWY 22R

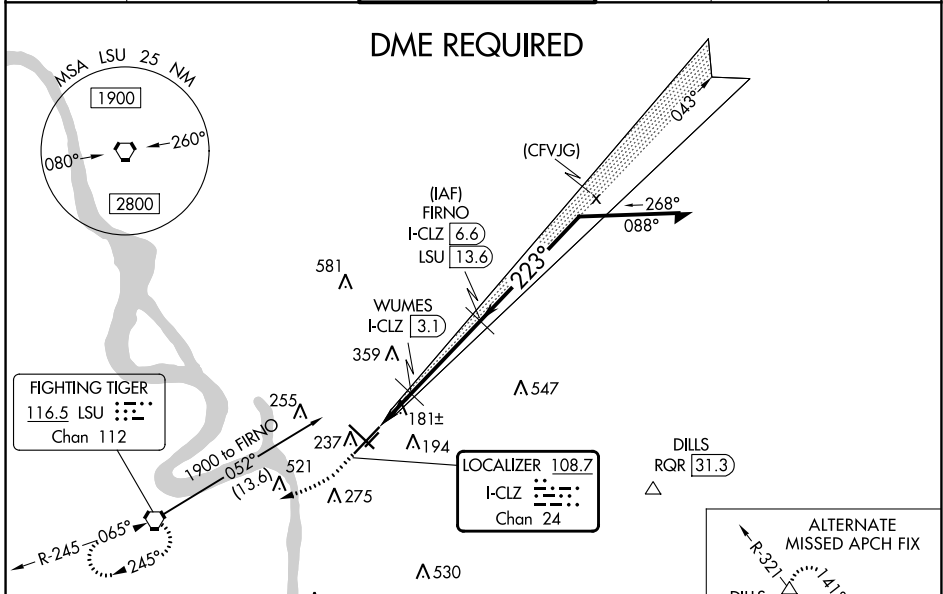
BATON ROUGE METRO, RYAN FLD (BTR)

**⚠** When local altimeter setting not received, use Hammond altimeter setting and increase all DA 91 feet and all MDA 100 feet; increase S-ILS 22R all Cats visibility to RVR 2200; increase S-LOC 22R Cat C/D visibility to RVR 5000. For inop MALSAR when using Hammond altimeter setting, increase S-ILS 22R all Cats visibility to RVR 4500, and S-LOC 22R Cat C/D visibility to 1 3/8 mile. For inop MALSAR, increase S-LOC 22R Cat C/D visibility to RVR 5500. VDP NA with Hammond altimeter setting.

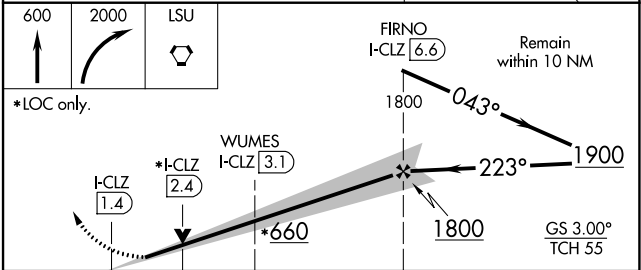
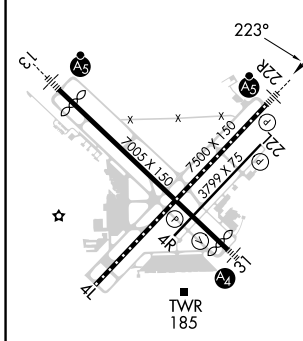
**MALSAR**  
**ASR**

**MISSED APPROACH:**  
Climb to 600 then climbing right turn to 2000 direct LSU VORTAC and hold.

ATIS <b>125.2</b>	BATON ROUGE APP CON * <b>120.3 278.3</b>	RYAN TOWER * <b>118.45 (CTAF) 0 257.8</b>	GND CON <b>121.9</b>	CLNC DEL <b>119.4</b>	UNICOM <b>122.95</b>
----------------------	---	--	-------------------------	--------------------------	-------------------------



ELEV 70	<b>D</b>	TDZE 70
---------	----------	---------



CATEGORY	A	B	C	D
S-ILS 22R	270/18 200 (200-1/2)			
S-LOC 22R	440/24	370 (400-1/2)	440/35	370 (400-3/4)
<b>C</b> CIRCLING	560-1 490 (500-1)	660-1 590 (600-1)	780-2 710 (800-2)	840-2 1/2 770 (800-2 1/2)

TDZ/CL Rwy 22R  
HIRL Rwy 13-31 and 4L-22R  
MIRL Rwy 4R-22L

TWR 185

SC-4, 18 APR 2024 to 16 MAY 2024

SC-4, 18 APR 2024 to 16 MAY 2024