

|  |                        |   |
|--|------------------------|---|
| WAAS<br>CH <b>72817</b><br><b>W13A</b> | APP CRS<br><b>133°</b> | Rwy Idg <b>5720</b><br>TDZE <b>67</b><br>Apt Elev <b>70</b> |
|--|------------------------|---|

# RNAV (GPS) RWY 13

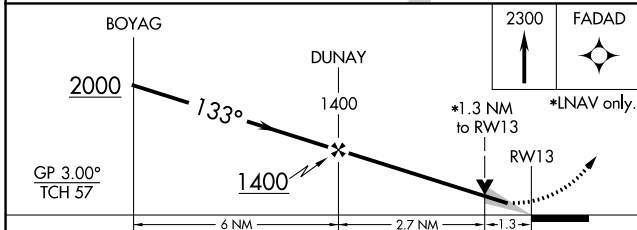
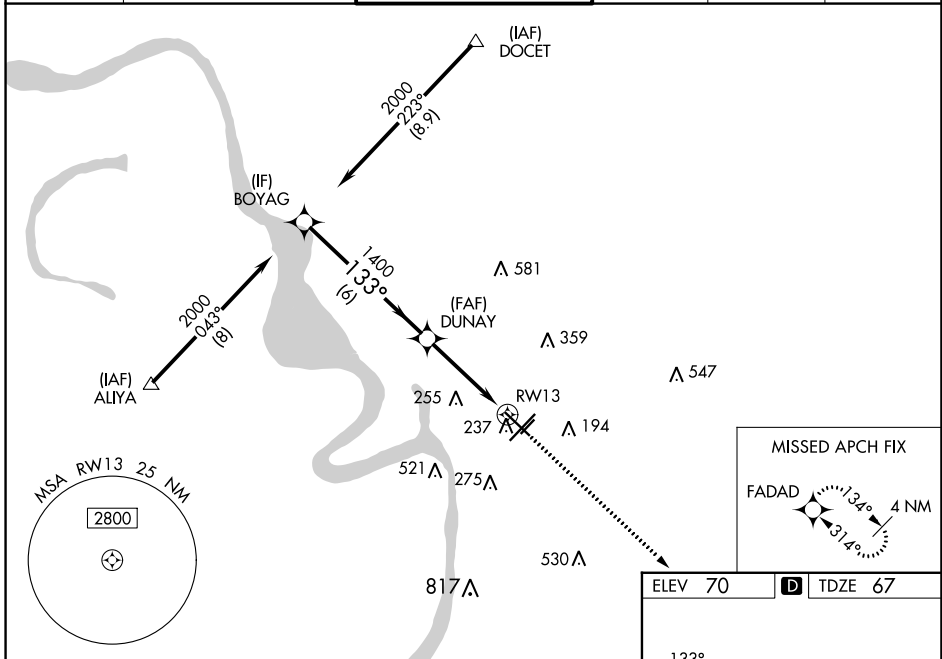
BATON ROUGE METRO, RYAN FLD (BTR)

**⚠** For uncompensated Baro-VNAV systems, LNAV/VNAV NA below -5°C (23°F) or above 54°C (130°F). DME/DME RNP-0.3 NA. When local altimeter setting not received, use Hammond altimeter setting and increase all DA 91 feet and all MDA 100 feet, and increase LNAV/VNAV all Cats visibility ¼ mile, and LNAV Cats C and D visibility ⅓ mile. For inop MALSRL when using Hammond altimeter setting, increase LPV all Cats visibility to ⅓ mile, LNAV Cat C and D visibility to 1⅓ mile. Baro-VNAV and VDP NA when using Hammond altimeter setting.

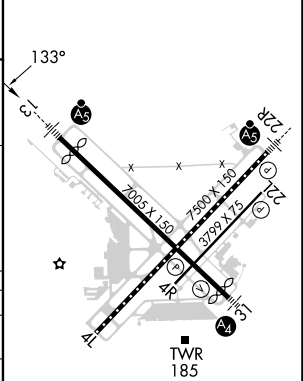
**MALSRL**

**MISSED APPROACH:** Climb to 2300 direct FADAD and hold.

|                      |   |  |                         |                          |                         |
|----------------------|---|--|-------------------------|--------------------------|-------------------------|
| ATIS<br><b>125.2</b> | BATON ROUGE APP CON ★<br><b>120.3 278.3</b> | RYAN TOWER ★<br><b>118.45 (CTAF) 257.8</b> | GND CON<br><b>121.9</b> | CLNC DEL<br><b>119.4</b> | UNICOM<br><b>122.95</b> |
|----------------------|---|--|-------------------------|--------------------------|-------------------------|



|         |         |
|---------|---------|
| ELEV 70 | TDZE 67 |
|---------|---------|



| CATEGORY          | A                    | B                    | C                    | D                      |
|-------------------|----------------------|----------------------|----------------------|------------------------|
| LPV DA            |                      | 267-½                | 200 (200-½)          |                        |
| LNAV/VNAV DA      |                      | 465-⅞                | 398 (400-⅞)          |                        |
| LNAV MDA          | 540-½                | 473 (500-½)          | 540-1                | 473 (500-1)            |
| <b>C</b> CIRCLING | 560-1<br>490 (500-1) | 660-1<br>590 (600-1) | 780-2<br>710 (800-2) | 840-2½<br>770 (800-2½) |

TDZ/CL Rwy 22R  
HIRL Rwy 13-31 and 4L-22R  
MIRL Rwy 4R-22L

SC-4, 18 APR 2024 to 16 MAY 2024

SC-4, 18 APR 2024 to 16 MAY 2024