

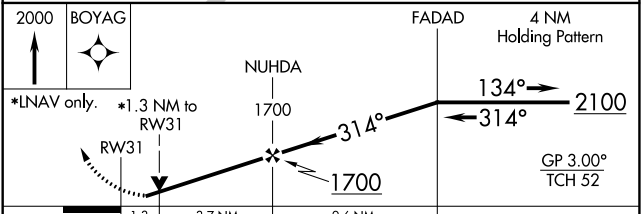
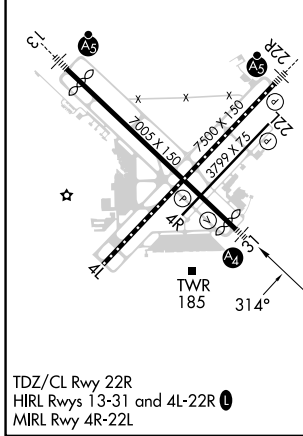
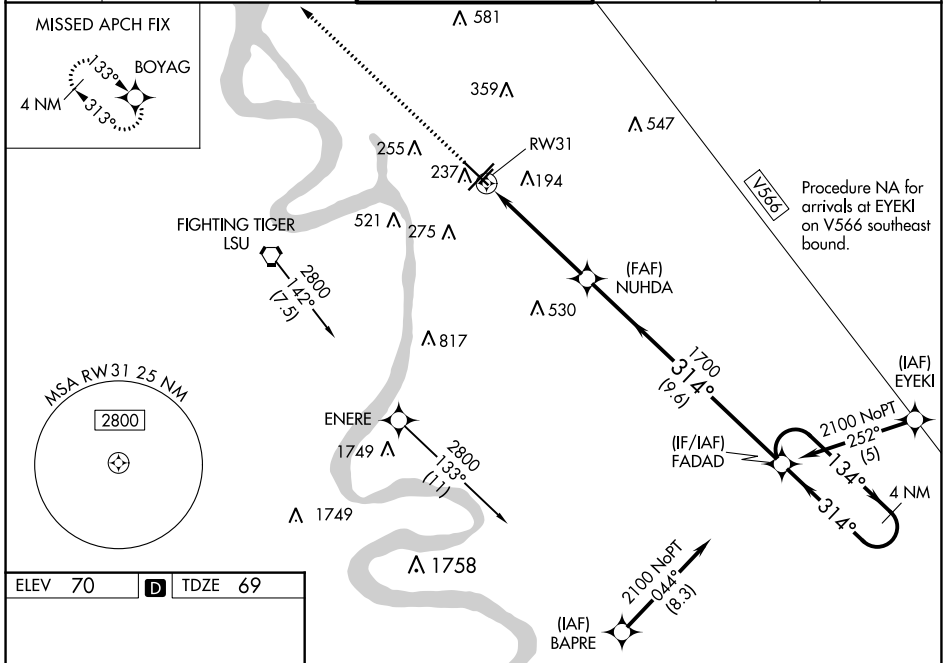
WAAS CH 90125 W31A	APP CRS 314°	Rwy Idg 6094 TDZE 69 Apt Elev 70
--	------------------------	---

RNAV (GPS) RWY 31

BATON ROUGE METRO, RYAN FLD (BTR)

RNP APCH.	MALS	MISSED APPROACH: Climb to 2000 direct BOYAG and hold.
<p>For uncompensated Baro-VNAV systems, LNAV/VNAV NA below -5°C (23°F) or above 54°C (130°F). For inop MALS, increase LNAV Cat C/D visibility to 1 3/8 mile. When local altimeter setting not received, use Hammond altimeter setting and increase all DA 91 feet and MDA 100 feet, increase LPV and LNAV/VNAV all Cats visibility 3/8 mile, LNAV Cats C and D visibility 3/8 mile, and Circling Cat C and D visibility 1/4 mile. Baro-VNAV and VDP NA when using Hammond altimeter setting. Rwy 31 helicopter visibility reduction below 3/4 SM NA.</p>		

ATIS 125.2	BATON ROUGE APP CON ★ 120.3 278.3	RYAN TOWER ★ 118.45 (CTAF) 257.8	GND CON 121.9	CLNC DEL 119.4	UNICOM 122.95
----------------------	---	--	-------------------------	--------------------------	-------------------------



CATEGORY	A	B	C	D
LPV DA		366-3/4	297 (300-3/4)	
LNAV/VNAV DA		446-3/4	377 (400-3/4)	
LNAV MDA	520-3/4	451 (500-3/4)	520-1	451 (500-1)
CIRCLING	560-1 490 (500-1)	660-1 590 (600-1)	780-2 710 (800-2)	840-2 1/2 770 (800-2 1/2)

SC-4, 18 APR 2024 to 16 MAY 2024

SC-4, 18 APR 2024 to 16 MAY 2024