

WAAS CH <b>81825</b> <b>W04A</b>	APP CRS <b>043°</b>	Rwy Idg <b>7500</b> TDZE <b>69</b> Apt Elev <b>70</b>
--	------------------------	---

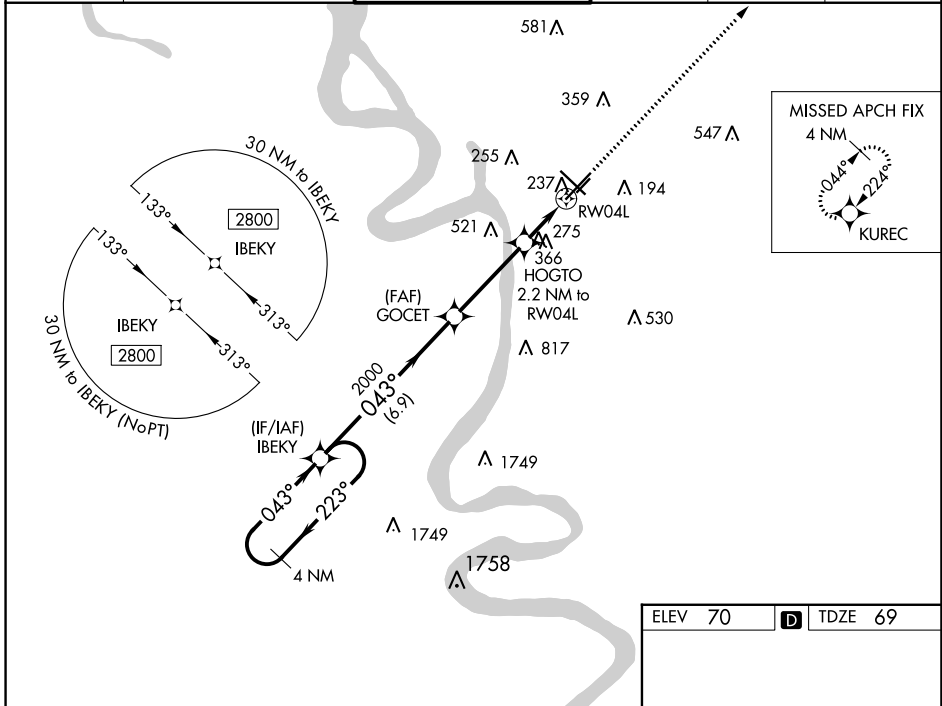
# RNAV (GPS) RWY 4L

BATON ROUGE METRO, RYAN FLD (BTR)

**⚠** For uncompensated Baro-VNAV systems, LNAV/VNAV NA below -5°C (23°F) or above 54°C (130°F).  
**⚠** DME/DME RNP-0.3 NA. Baro-VNAV and VDP NA when using Hammond altimeter setting. When local altimeter setting not received, use Hammond altimeter setting and increase all DA 91 feet and all ASR MDA 100 feet; increase LPV visibility ¼ mile all Cats, LNAV/VNAV visibility ½ mile all Cats and LNAV Cat C/D visibility ¼ mile, Circling Cat C/D visibility ¼ mile. Helicopter visibility reduction below ¾ SM NA.

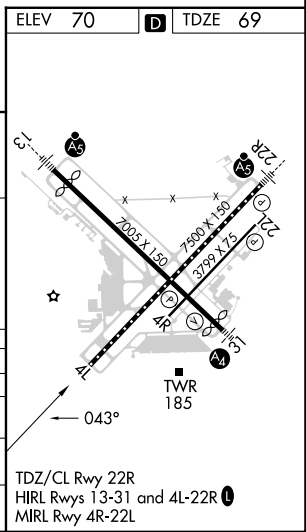
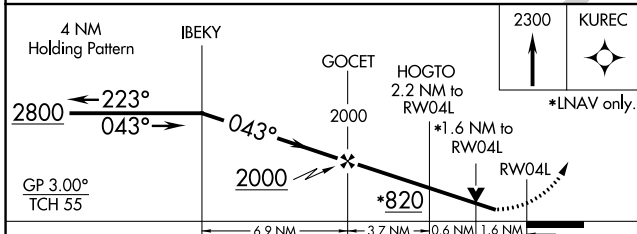
**MISSED APPROACH:**  
Climb to 2300 direct KUREC and hold.

ATIS <b>125.2</b>	BATON ROUGE APP CON* <b>120.3 278.3</b>	RYAN TOWER* <b>118.45 (CTAF) 257.8</b>	GND CON <b>121.9</b>	CLNC DEL <b>119.4</b>	UNICOM <b>122.95</b>
----------------------	--	---	-------------------------	--------------------------	-------------------------



SC-4, 18 APR 2024 to 16 MAY 2024

SC-4, 18 APR 2024 to 16 MAY 2024



CATEGORY	A	B	C	D
LPV DA		345- <sup>7</sup> / <sub>8</sub>	276 (300- <sup>7</sup> / <sub>8</sub> )	
LNAV/VNAV DA		656-2	587 (600-2)	
LNAV MDA	620-1	551 (600-1)	620-1 <sup>5</sup> / <sub>8</sub>	551 (600-1 <sup>5</sup> / <sub>8</sub> )
<b>C</b> CIRCLING	620-1 550 (600-1)	660-1 590 (600-1)	780-2 710 (800-2)	840-2 <sup>1</sup> / <sub>2</sub> 770 (800-2 <sup>1</sup> / <sub>2</sub> )

TDZ/CL Rwy 22R  
HIRL Rwys 13-31 and 4L-22R  
MIRL Rwy 4R-22L