


LOC I-JDU 111.15	APP CRS 319°	Rwy ldg 10000 TDZE 442 Apt Elev 459
----------------------------	------------------------	--

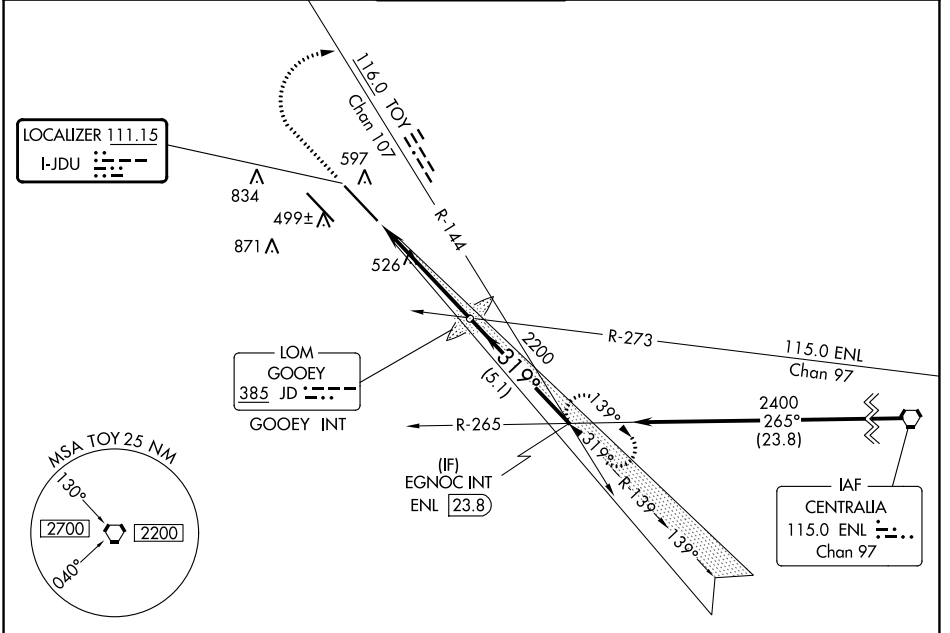
ILS or LOC RWY 32R

SCOTT AFB/MIDAMERICA ST LOUIS (BLV)

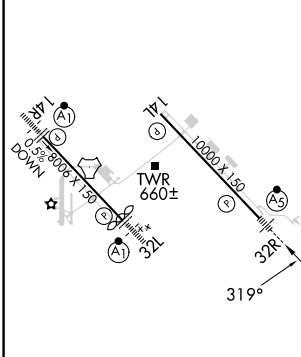
ASR For inop ALS, increase S-ILS 32R Cat E visibility to RVR 4000 and increase S-LOC visibility to RVR 5000.
* RVR 1800 authorized with use of FD or AP or HUD to DA.

MALS  MISSED APPROACH: Climb to 1500 then climbing right turn to 2400 on heading 194° and TOY VORTAC R-144 to EGNOC INT and hold.

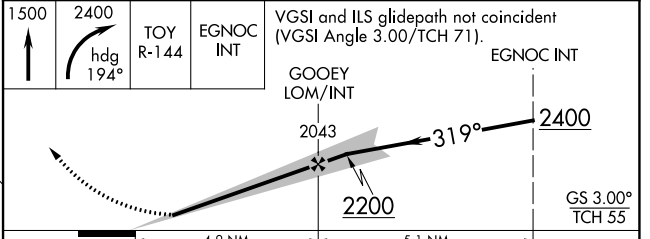
ATIS ★ 128.7 256.7	ST LOUIS APP CON 125.2 281.5	SCOTT TOWER 128.25 253.5	GND CON 119.2 275.8	CLNC DEL 119.875 263.025
------------------------------	--	------------------------------------	-------------------------------	------------------------------------



ELEV 459	D	TDZE 442
----------	----------	----------



A 1155 Procedure NA for arrivals on ENL VORTAC airway radials 225 CW 294.



CATEGORY	A	B	C	D	E
S-ILS 32R *	642/24 200 (200-½)				
S-LOC 32R	780/24	338 (400-½)	780/26	338 (400-½)	
C CIRCLING	1000-1 541 (600-1)	1120-1 661 (700-1)	1240-2¼ 781 (800-2¼)	1240-2½ 781 (800-2½)	1240-2¾ 781 (800-2¾)

EC-3, 18 APR 2024 to 16 MAY 2024

EC-3, 18 APR 2024 to 16 MAY 2024