

PLESS FIVE DEPARTURE

AL-46 (FAA)

SCOTT AFB/MIDAMERICA ST LOUIS (BLV)
BELLEVILLE, ILLINOIS

ATIS ★
 128.7 256.7
 CLNC DEL
 119.875 263.025
 GND CON
 119.2 275.8
 SCOTT TOWER
 128.25 263.5
 ST LOUIS DEP CON
 125.2 281.5

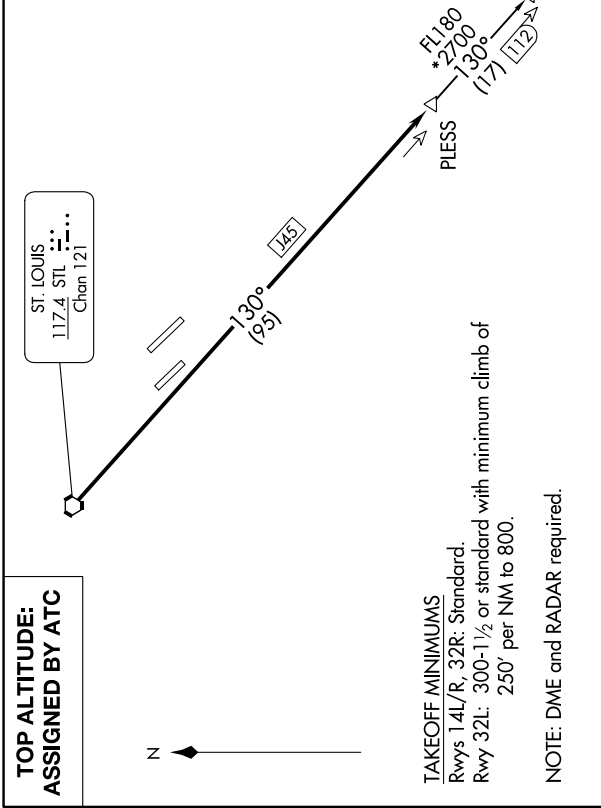
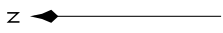
POCKET CITY
 113.3 PXY
 Chan 80

NASHVILLE
 114.1 BNA
 Chan 88

ST. LOUIS
 117.4 STL
 Chan 121

EC-3, 18 APR 2024 to 16 MAY 2024

**TOP ALTITUDE:
 ASSIGNED BY ATC**



TAKEOFF MINIMUMS

Rwys 14L/R, 32R: Standard.
 Rwy 32L: 300-1½ or standard with minimum climb of 250' per NM to 800.

NOTE: DME and RADAR required.

DEPARTURE ROUTE DESCRIPTION
 Climb on assigned heading for vector to appropriate route. Maintain 3000 or assigned altitude, thence. . . .
 . . . from over STL VORTAC on STL R-130 to PLESS, then on (transition) or (assigned route). Expect filed altitude 10 minutes after departure.
DENNI TRANSITION (PLESS5.DENNI): From over PLESS on STL R-130 to DENNI.
NASHVILLE TRANSITION (PLESS5.BNA): From over PLESS on STL R-130 to DENNI, then on STL R-130 and BNA R-315 to BNA VORTAC.

NOTE: Chart not to scale.

PLESS FIVE DEPARTURE

EC-3, 18 APR 2024 to 16 MAY 2024