

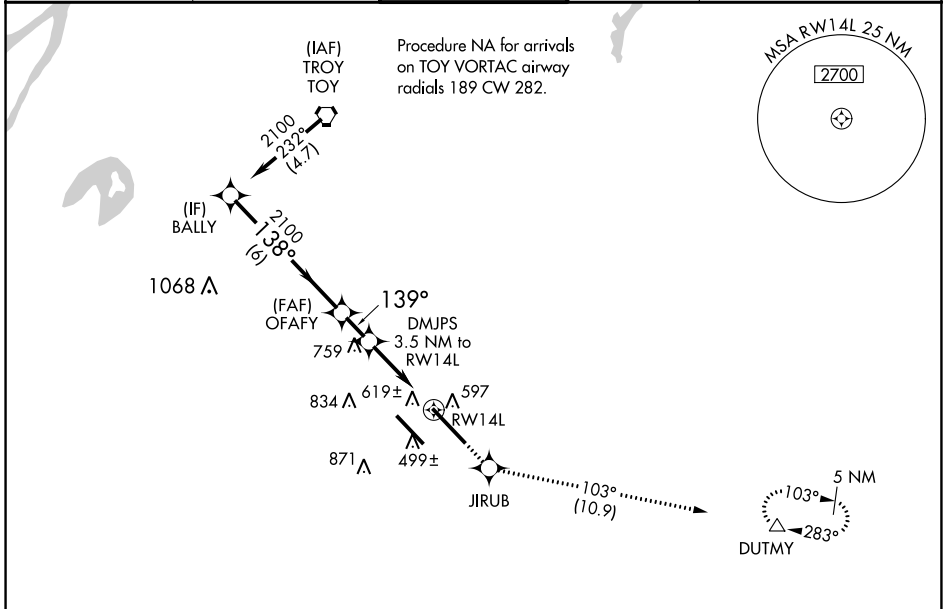
WAAS CH <b>58218</b> <b>W14A</b>	APP CRS <b>139°</b>	Rwy Idg TDZE <b>442</b> Apt Elev <b>459</b>	<b>10000</b> <b>442</b> <b>459</b>
--	------------------------	---	--

# RNAV (GPS) RWY 14L

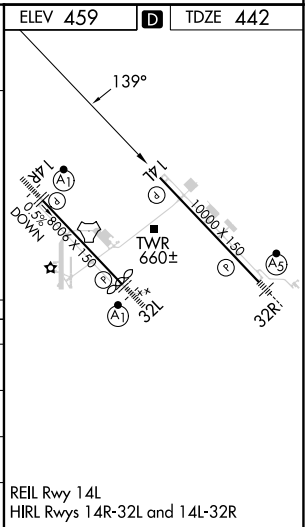
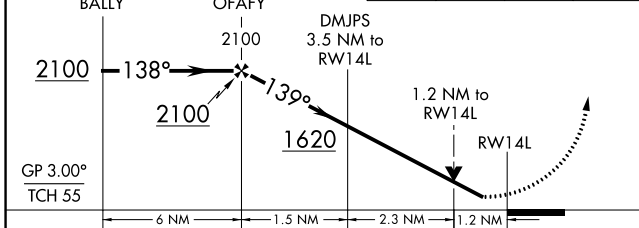
SCOTT AFB/MIDAMERICA ST LOUIS (BLV)

RNAV 1 - GPS.	MISSED APPROACH: Climb to 2300 direct JIRUB and on track 103° to DUTMY and hold.
<p><b>▼</b> Rwy 14L helicopter visibility reduction below RVR 4000 NA.</p> <p><b>▲</b> For uncompensated Baro-VNAV systems, LNAV/VNAV NA below -18°C or above 54°C.</p> <p>ASR</p>	

ATIS ★ <b>128.7 256.7</b>	ST LOUIS APP CON <b>125.2 281.5</b>	SCOTT TOWER <b>128.25 253.5</b>	GND CON <b>119.2 275.8</b>	CLNC DEL <b>119.875 263.025</b>
------------------------------	--	------------------------------------	-------------------------------	------------------------------------



VGSI and RNAV glidepath not coincident (VGSI Angle 3.00/TCH 71).	2300	JIRUB	tr 103°	DUTMY	ELEV 459	<b>D</b>	TDZE 442
--	------	-------	---------	-------	----------	----------	----------



CATEGORY	A	B	C	D
LPV DA	694/40		252 (300-¾)	
LNAV/VNAV DA	934-1⅜		492 (500-1⅝)	
LNAV MDA	900/55	458 (500-1)	900-1⅜	458 (500-1⅝)
<b>C</b> CIRCLING	1000-1 541 (600-1)	1120-1 661 (700-1)	1240-2¼ 781 (800-2¼)	1240-2½ 781 (800-2½)

EC-3, 18 APR 2024 to 16 MAY 2024

EC-3, 18 APR 2024 to 16 MAY 2024