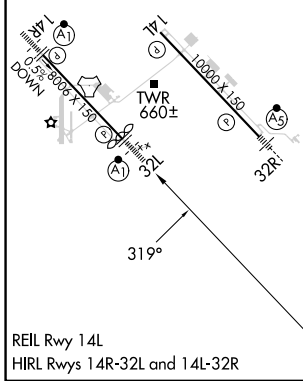
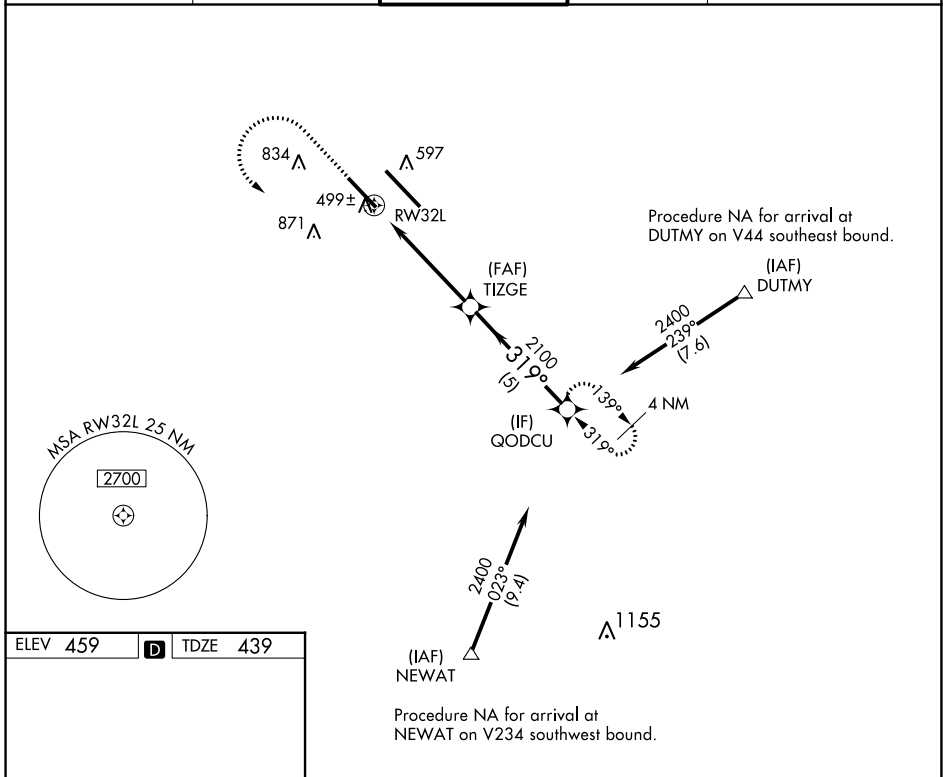


| | |
|------------------------|------------------------|
| APP CRS 319° | Rwy Idg 7822 |
| | TDZE 439 |
| | Apt Elev 459 |

RNAV (GPS) RWY 32L

SCOTT AFB/MIDAMERICA ST LOUIS (BLV)

| | | | | |
|--|--|------------------------------------|---|------------------------------------|
| RNP APCH-GPS. | | ALSF-1 | MISSED APPROACH: Climb to 1500 then climbing left turn to 2400 direct QODCU and hold. | |
| ▼ For inop ALS, increase LNAV Cat C/D visibility to 1 1/8 mile. ▲ ASR | | ▲ (A1) | | |
| ATIS ★ 128.7 256.7 | ST LOUIS APP CON 125.2 281.5 | SCOTT TOWER 128.25 253.5 | GND CON 119.2 275.8 | CLNC DEL 119.875 263.025 |



| | | | | |
|--------------------------|-----------------------|-----------------------|--|-------------------------------|
| 1500 | 2400 | QODCU | VGSI and descent angles not coincident (VGSI Angle 3.00/TCH 50). | |
| | | QODCU | | |
| 1.4 NM to RW32L RW32L | | TIZGE 2100 | 2400 | |
| 1.4 NM 3.7 NM 5 NM | | | | |
| CATEGORY | A | B | C | D |
| LNAV MDA | 920/24 | 481 (500-1/2) | 920/50 | 481 (500-1) |
| C CIRCLING | 1000-1 541 (600-1) | 1120-1 661 (700-1) | 1240-2 1/4 781 (800-2 1/4) | 1240-2 1/2 781 (800-2 1/2) |

EC-3, 18 APR 2024 to 16 MAY 2024

EC-3, 18 APR 2024 to 16 MAY 2024