

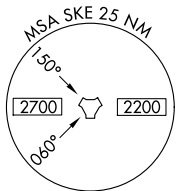
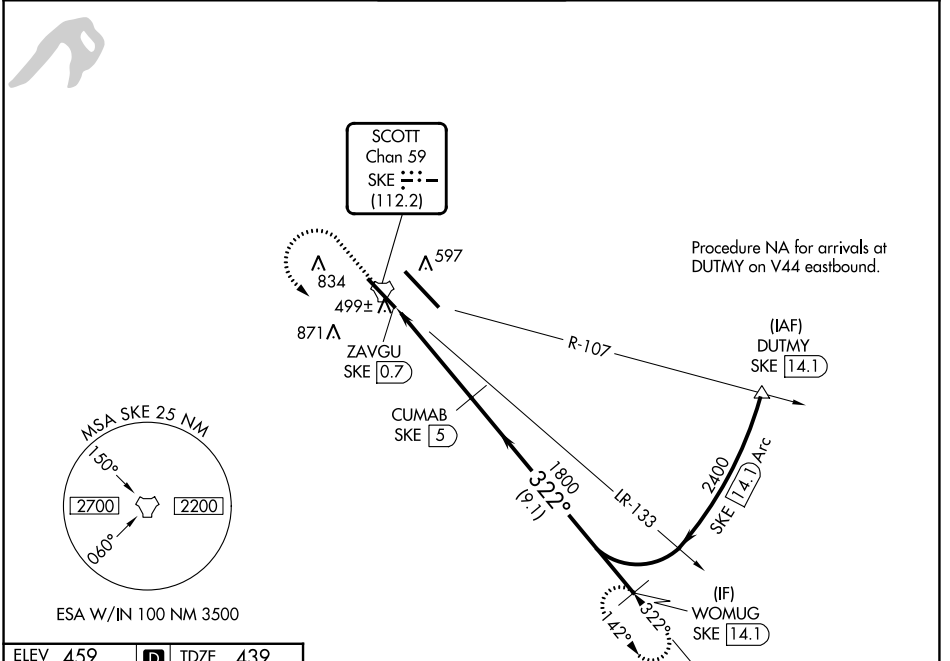
TACAN SKE Chan 59 (112.2)	APP CRS 322°	Rwy ldg TDZE Apt Elev	7822 439 459
--	------------------------	-----------------------------	---

TACAN RWY 32L

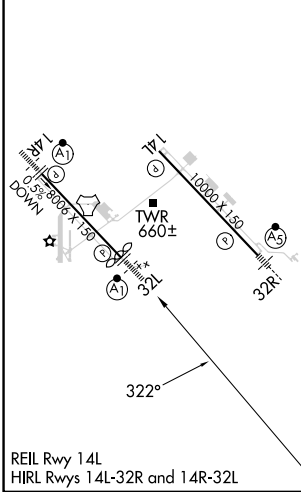
SCOTT AFB/MIDAMERICA ST LOUIS (BLV)

 For inop ALS, increase S-32L Cat C/D/E visibility to 1½ SM.	ALSF-1 	MISSED APPROACH: Climb to 1500 then climbing left turn to 2400 on SKE R-142 to WOMUG/14.1 DME and hold.

ATIS ★ 128.7 256.7	ST LOUIS APP CON 125.2 281.5	SCOTT TOWER 128.25 253.5	GND CON 119.2 275.8	CLNC DEL 119.875 263.025
------------------------------	--	------------------------------------	-------------------------------	------------------------------------



ELEV 459	D	TDZE 439
----------	----------	----------



1500 ↑ SKE R-142	2400 SKE WOMUG SKE [14.1]	VGSI and descent angles not coincident (VGSI Angle 3.00/TCH 50).	WOMUG SKE [14.1]		
ZAVGU SKE [0.7]	CUMAB SKE [5]	1800 2.81° TCH 72	2400 WOMUG SKE [14.1]		
1.4 NM	3 NM	9.1 NM			
CATEGORY S-32L	A 920/24 481 (500-½)	B 1120-1 661 (700-1)	C 1240-2¼ 781 (800-2¼)	D 1240-2½ 781 (800-2½)	E 920/60 481 (500-1¼) 1240-2¾ 781 (800-2¾)
<input checked="" type="checkbox"/> CIRCLING	1000-1 541 (600-1)	1120-1 661 (700-1)	1240-2¼ 781 (800-2¼)	1240-2½ 781 (800-2½)	1240-2¾ 781 (800-2¾)

TACAN RWY 32L

EC-3, 18 APR 2024 to 16 MAY 2024

EC-3, 18 APR 2024 to 16 MAY 2024