

ENID, OKLAHOMA

# ILS or LOC RWY 17R

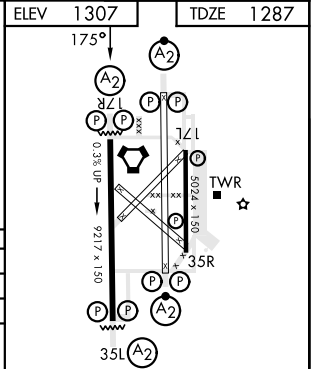
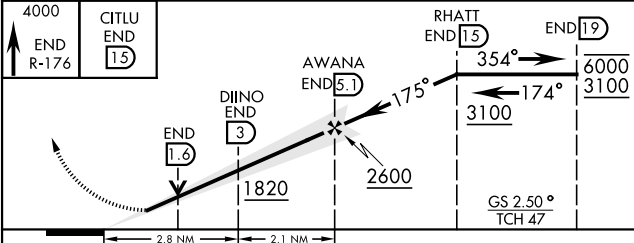
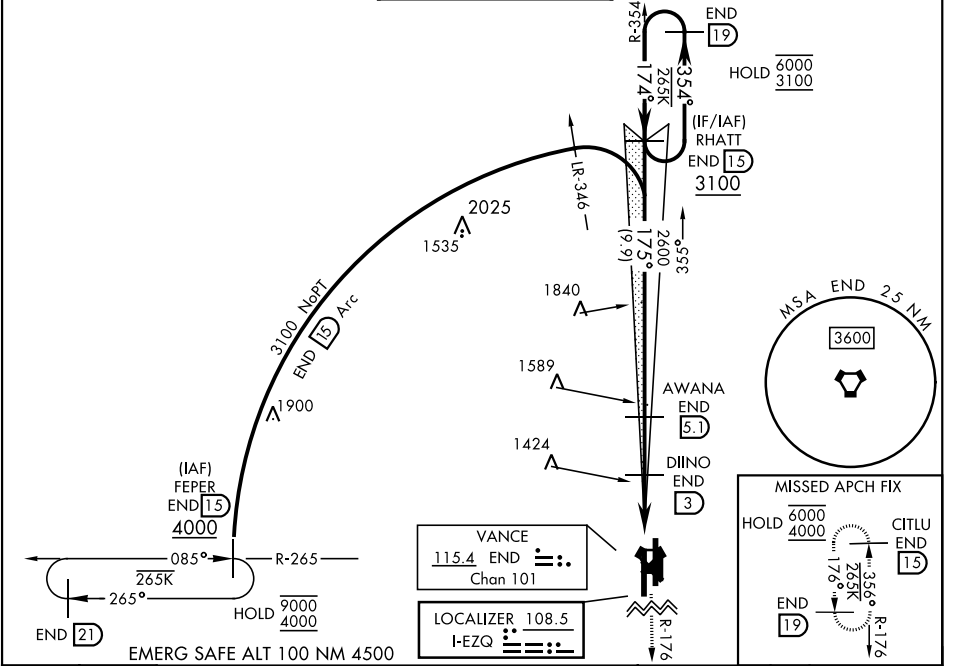
VANCE AFB (KEND)

LOC I-EZQ <b>108.5</b>	APCH CRS <b>175°</b>	Rwy Idg TDZE Arprt Elev <b>9217</b> <b>1287</b> <b>1307</b>
---------------------------	-------------------------	--

[USAF]

\*When ALS inop, increase CAT AB vis to 1 mile; CAT CDE vis to 1½ miles.  
 \*\*When ALS inop, increase CAT AB vis to 1 mile; CAT CDE vis to 1½ miles.

ATIS ★ <b>115.4 263.15</b>	APP CON <b>125.45 388.2 (E)</b> <b>126.75 346.325 (W)</b>	TOWER ★ <b>124.05 259.1</b>	GND CON <b>121.675 289.4</b>	CLNC DEL <b>225.4</b>
-------------------------------	---	--------------------------------	---------------------------------	--------------------------



CATEGORY	A	B	C	D	E
S-ILS 17R	1487-¾		200	(200-¾)	
S-LOC 17R*	1680-¾ 393 (400-¾)		1680-⅞ 393 (400-⅞)		
CIRCLING	1760-1	1800-1½	1900-2	1940-2¼	
	453 (500-1)	493 (500-1½)	593 (600-2)	633 (700-2¼)	
LOCAL ALTIMETER, WITHOUT LAST STEPDOWN FIX					
S-LOC 17R**	1820-¾ 533 (600-¾)		1820-1¼ 533 (600-1¼)		
CIRCLING	1820-1	1820-1½	1900-2	1940-2¼	
	513 (600-1)	513 (600-1½)	593 (600-2)	633 (700-2¼)	

HIRL Rwy 17C-35C, 17R-35L					
MIRL Rwy 17L-35R					
REIL Rwy 17L, 35R					
FAF to MAP 4.8 NM					
Knots	60	90	120	150	180
Min:Sec	4:48	3:12	2:24	1:55	1:36

ENID, OKLAHOMA  
Orig 30NOV23

36°20'N-97°55'W

VANCE AFB (KEND)

# ILS or LOC RWY 17R

SC-1, 18 APR 2024 to 16 MAY 2024

SC-1, 18 APR 2024 to 16 MAY 2024