

ENID, OKLAHOMA


ILS or LOC RWY 35C

VANCE AFB (KEND)

LOC I-END 110.1	APCH CRS 355°	Rwy Idg TDZE Arprt Elev 9217 1293 1307
---------------------------	-------------------------	--

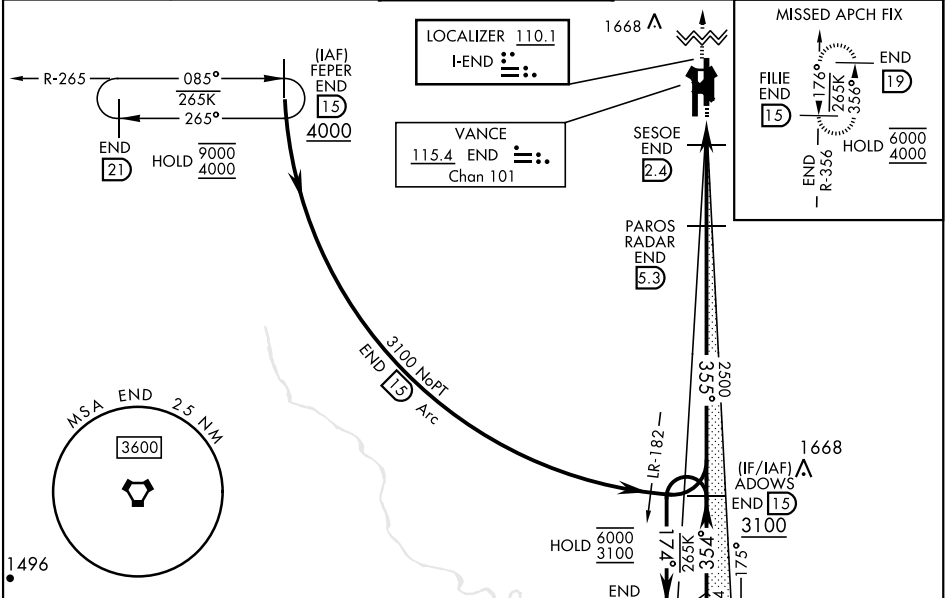
AL-135 [USAF]

RADAR or DME required.

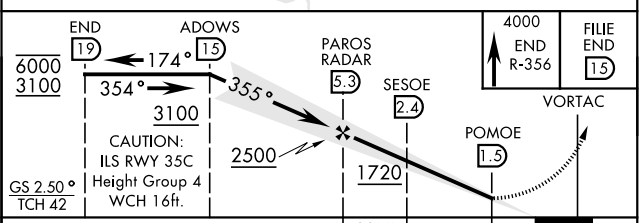
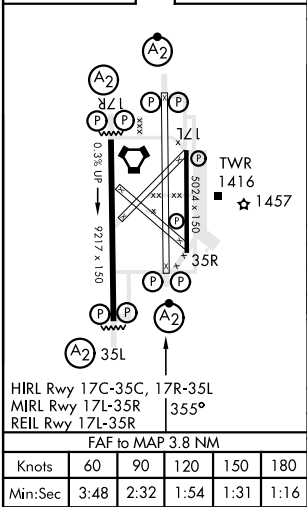
SALS 



MISSED APPROACH: Climb to 4000, intercept END VORTAC R-356 to FILE and hold.

ATIS ★ 115.4 263.15	APP CON 125.45 388.2 EAST 126.75 346.325 WEST	TOWER ★ 124.05 259.1	GND CON 121.675 289.4	CLNC DEL 225.4
-------------------------------	---	--------------------------------	---------------------------------	--------------------------



EMERG SAFE ALT 100 NM 4500
ELEV 1307 TDZE 1293



CATEGORY	A	B	C	D	E
S-ILS 35C	1493/40		200	(200-¾)	
S-LOC 35C*	1640/40		347	(400-¾)	
 CIRCLING	1760-1		1800-1½	1900-2	2300-3
	453 (500-1)		493 (500-1½)	593 (600-2)	993 (1000-3)
WITHOUT SESOE FIX MINIMUMS					
S-LOC 35C**	1720/40 427 (500-¾)		1720/50 427 (500-1)		
 CIRCLING	1760-1		1800-1½	1900-2	2300-3
	453 (500-1)		493 (500-1½)	593 (600-2)	993 (1000-3)

ENID, OKLAHOMA
Amdt 2 24MAR22

36°20'N-97°55'W

VANCE AFB (KEND)

ILS or LOC RWY 35C

SC-1, 18 APR 2024 to 16 MAY 2024

SC-1, 18 APR 2024 to 16 MAY 2024